



CCC Presentation

Hera-Federation Complex Project Update

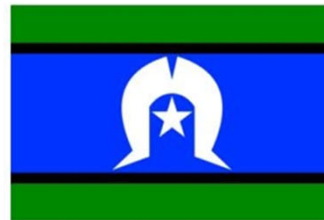
20 August 2024

ASX Code: AMI



Acknowledgement of Country

- Aurelia Metals Ltd respectfully acknowledges the Ngiyampaa Nation as the Traditional Custodians of this land – both past and present.
- We know this land has history, custodians and stories, spanning tens of thousands of years, that endure to this day.
- We pay our respects to Elders both past and present and we embrace their continued connections to this place.
- We commit to reconciling the past and working together in pursuit of knowledge and understanding as we seek to create a better future for all generations yet to come.



Federation Hera Complex Progress

Tracking Key Dates of Interest:

- Stage 2 Civil works set to commence in May 2024. This involves the area of the Rom pad, paste plant, heavy vehicle access road and new explosives magazine. Works are ongoing and being carried out by Neill Earthmoving, Nyngan.

Wet Weather Impacts:

- The site has experienced the rain events through February, May and early June. These rainfall events combined with ongoing cold weather conditions, have impacted on-site water storage levels and resulted in a temporary pause to underground mining. The site did not have sufficient storage capacity to enable de-watering the mine.
- Works have commenced on the a 230 megalitre (ML) water management dam which due for completion in September weather permitting . It is being built by Toowoomba based company BK Civil. This dam will enable to manage water through winter and provide additional storage for summer needs.
- Prior to its completion and commissioning, additional evaporators were placed on the tailings dam and a water treatment plant was hired and installed. The plant treats water to a quality suitable for livestock and native fauna and it is being pumped to the “back tank east” and stored for future activities. The water is tested in accordance with the Environment Protection Licence Conditions.

Mine Development

Underground mine development at Federation recommenced in early July 2024 and has now returned to 24 hour development activity in the first stope production area in the upper levels of the mine.

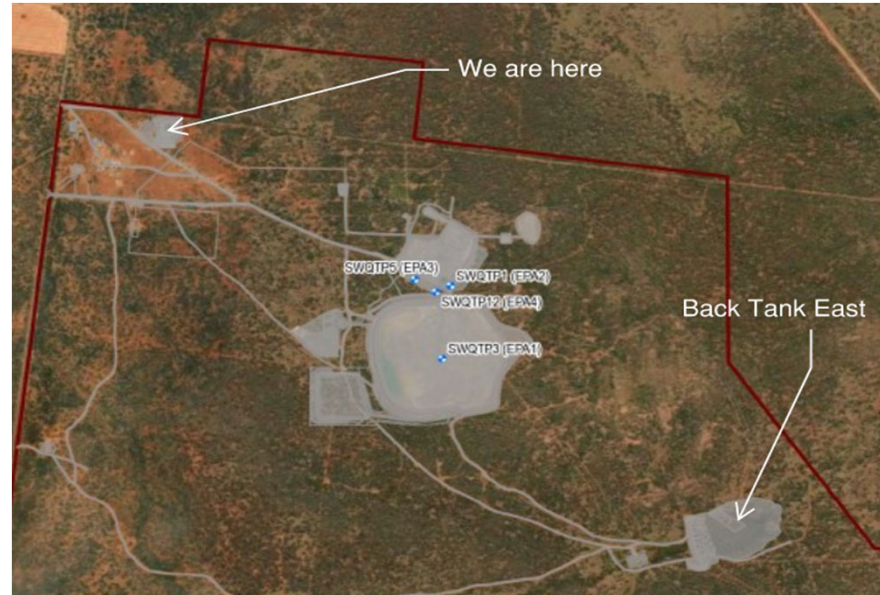
Federation Hera Complex Progress

Water Management Dam Construction:



Federation Hera Complex Progress

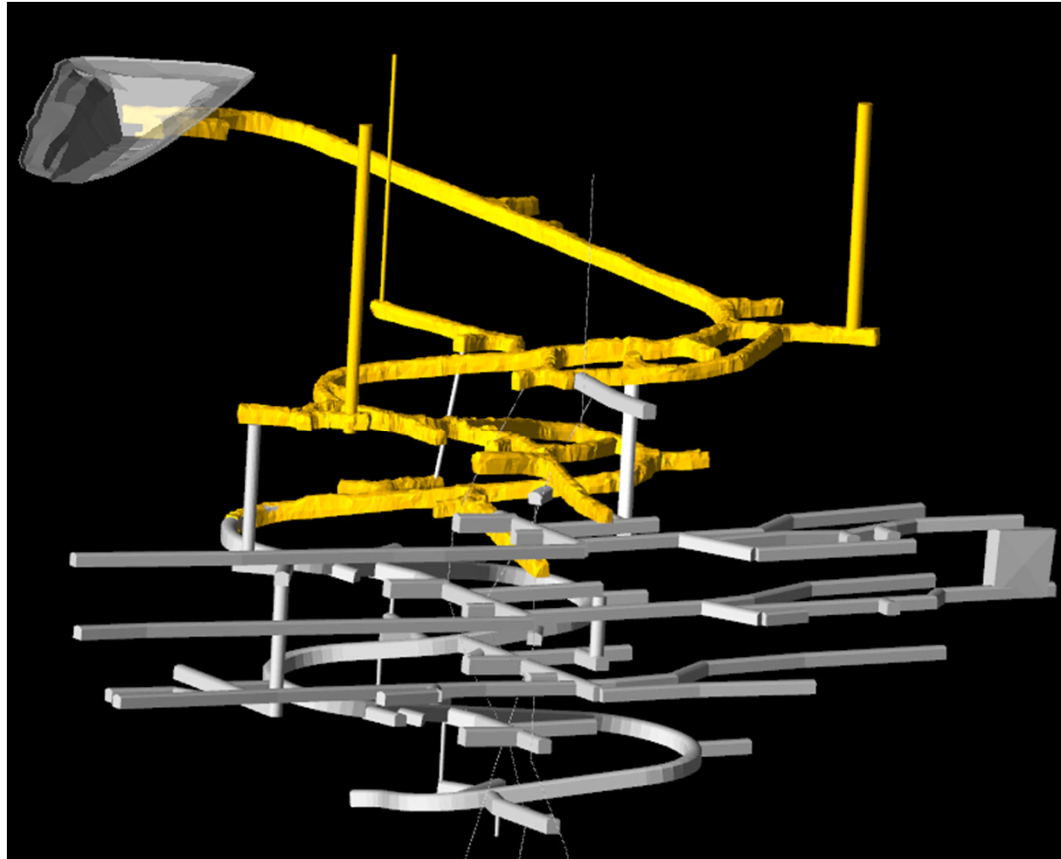
Water Treatment Plant and location of Back Tank east :



Federation Mine Development

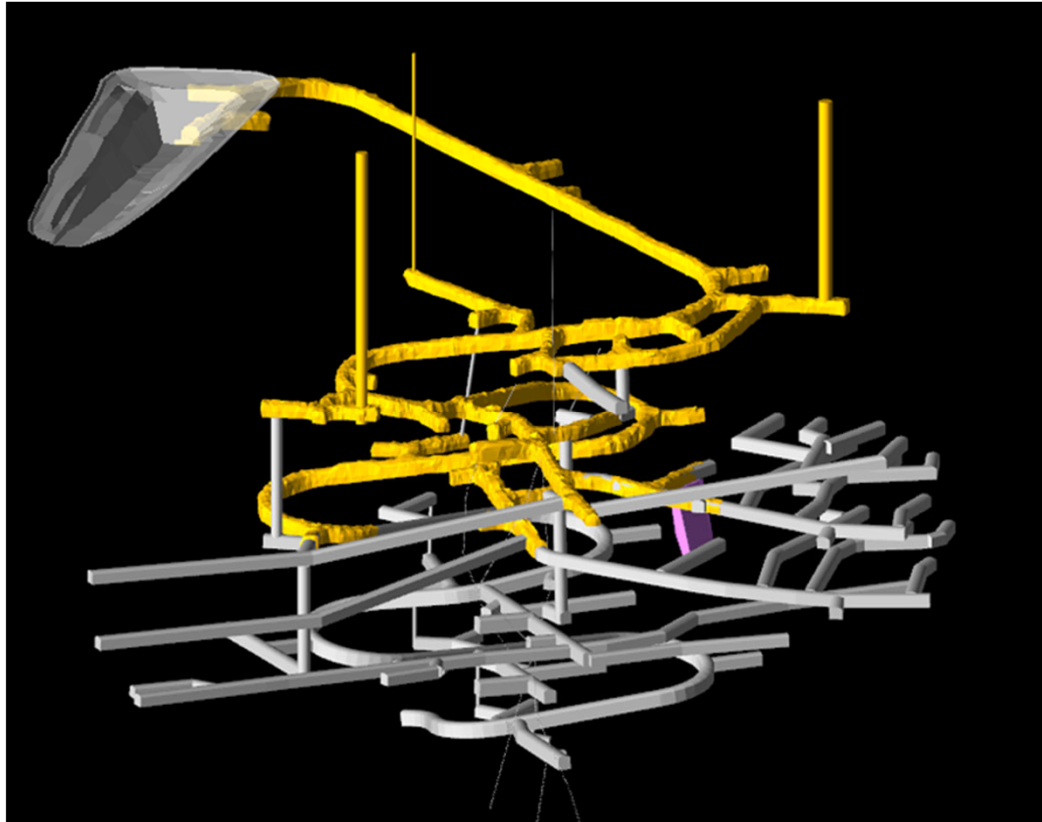


Mine development
November 2023
mining achieved
217.7m advance



Federation development 27 April 2024

Federation Mine Development



Federation development 2 August 2024



Mine development
November 2023
mining achieved
217.7m advance

Federation Mine Development



Recommissioning of the Hera workshop to service all light vehicles at Hera Federation



Environment and Community

20 August 2024



ASX Code: AMI



Environment and Community

Environmental Priorities, Improvement Initiatives and Complaints

Modification 2 to the Project Approval

As communicated at the May CCC, The company has issued a letter to the Department of Planning, Housing and Infrastructure to commence “Mod 2” to the Project Approval

Since that meeting, the company has communicated that it will be seeking approval to truck from 7am to 10pm, beyond the current approved 7pm and may seek approval to transport 24hrs.

As with all Modifications, there will be a formal advertising and submission process as the application progresses however preliminary feedback to the change in hours and increased truck movements.

No further details are available at this time.

Environment and Community

Environmental Priorities, Improvement Initiatives and Complaints

Priorities and improvement initiatives

- Approval to carry out road works on the Kidman is a key priority to enable ore to be transported to the Peak. The company's consultant is progressing a works deed with Transport for NSW and it is hoped it will be resolved by October.

Complaints

To lodge a complaint, email: Hera.community@aureliametals.com.au or phone: 1800 437 264 (call center 24/7)

No complaints were received since the last meeting.

Environment and Community

Rehabilitation Strategy – Hard copy provided

- The company must prepare a Rehabilitation Strategy for the development to the satisfaction of the Planning Secretary
- be prepared in consultation with Resources Regulator, DPE Water, BCD, CSC and the CCC
- The company must rehabilitate all areas affected by the development in accordance with the conditions imposed on the mining leases(s) associated with the development under the Mining Act 1992.
- The rehabilitation must be generally consistent with the proposed rehabilitation strategy described in the EIS and must comply with the objectives in Table 7 of the project approval.

Table 7: Rehabilitation objectives

<i>Feature</i>	<i>Objective</i>
All areas affected by the development	<ul style="list-style-type: none"> • Safe, stable and non-polluting • Fit for the intended post-mining land use/s • Establish the final landform and post mining- land use/s as soon as practicable after cessation of mining • Minimise post-mining environmental impacts
Final landform	<ul style="list-style-type: none"> • Stable and sustainable for the intended post-mining land use/s • Integrated with surrounding natural landforms and other mine rehabilitated landforms, to the greatest extent practicable

Environment and Community

Rehabilitation Strategy –

<i>Feature</i>	<i>Objective</i>
	<ul style="list-style-type: none"> • Incorporate macro-relief and micro-relief and drainage features that mimic natural topography and mitigate erosion, to the greatest extent practicable • Maximise surface water drainage to the natural environment • Minimise visual impacts, where practicable
Stopes	<ul style="list-style-type: none"> • Backfilled • Safe and stable • Negligible surface subsidence in the long term
Portals and vent shafts	<ul style="list-style-type: none"> • To be decommissioned and made safe and stable
Tailings storage facility	<ul style="list-style-type: none"> • Final landform designed for native grassland species, unless further assessment indicates the capping design can accommodate woodland vegetation • Free draining
Surface extraction area	<ul style="list-style-type: none"> • Free draining • Optimise the size and depth to ensure the final landform is stable and non-polluting • Minimise to the greatest extent practicable the drainage catchment and any instability risk.
Waste rock storage areas	<ul style="list-style-type: none"> • Minimise the potential for acid mine drainage and erosion • Potentially acid forming materials to be emplaced in the underground workings
Mine water discharges following mine closure (from any location)	<ul style="list-style-type: none"> • Negligible environmental impact
Water quality	<ul style="list-style-type: none"> • Water retained on the site is fit for intended post-mining land use/s
Surface infrastructure	<ul style="list-style-type: none"> • To be decommissioned and removed, unless Resources Regulator agrees otherwise
Community	<ul style="list-style-type: none"> • Ensure public safety • Minimise adverse socio-economic effects associated with mine closure



Exploration

20 August 2024



ASX Code: AMI



Exploration

Federation Exploration

- Since the May meeting there has been an auger program completed on Four Corners (between Hera and Federation) and on Lyell.
- Works on Iron Bark were suspended due to the rain and wet access.
- No results have been communicated as yet

