



**NSW
Resources
Regulator**

FWP0001068

PEAK GOLD MINE FORWARD PROGRAM

Thursday 29 September 2022 to Sunday
28 September 2025

Contents

Summary.....	3
Important.....	3
Three-year forecast – surface disturbance activities.....	4
Project description.....	4
Description of surface disturbance activities.....	4
Three-year rehabilitation forecast.....	6
Rehabilitation planning schedule.....	6
Rehabilitation research and trials.....	7
Rehabilitation maintenance and corrective actions.....	8
Rehabilitation schedule.....	8
Subsidence remediation for underground operations.....	8
Progressive mining and rehabilitation statistics.....	9
Three-yearly forecast cumulative disturbance and rehabilitation progression.....	9
Rehabilitation key performance indicators (KPIs).....	9
Attachment 1 – Reporting Definitions.....	10
Attachment 2 – Definitions.....	12
Attachment 3 – Plans.....	18

Summary

DETAIL	
Mine	Peak Gold Mine
Reference	FWP0001068
Forward program commencement date	Thursday 29 September 2022
Forward program end date	Sunday 28 September 2025
Forward program revision (if applicable)	
Contact	Gregory Brown
Mining leases	MPL 854 (1906), CML 7 (1992), CML 6 (1992), ML 1483 (1992), CML 9 (1992), CML 8 (1992), ML 1805 (1992)
Project location	Peak Gold Mines Pty Limited
Date of submission	Monday 1 August 2022

Important

The department may make the information in your program and any supporting information available for inspection by members of the public, including by publication on its website or by displaying the information at any of its offices. If you consider any part of your program to be confidential, please communicate this to the department via the message function on this submission within the NSW Resources Regulator Portal.

Three-year forecast – surface disturbance activities

Project description

The Peak Mining Complex and the New Cobar Mining Complex are underground metalliferous mining operations producing gold, copper, silver, lead and zinc located within western New South Wales. These mines include several ore bodies including Peak, Perseverance, New Cobar and Chesney, which are all located to the south of Cobar. Ore processing and concentrate handling is undertaken at the Peak Complex with ore from the New Cobar Complex trucked to the processing facilities at the Peak Complex. Tailings produced is deposited at the tailings storage facility located at the Peak Complex.

Description of surface disturbance activities

Exploration activities

Surface exploration operations likely to be proposed could include the following activities:

- geological mapping and surface sampling
- airborne geophysical survey
- exploration drilling
- down hole geophysical logging

Construction activities

The raising of the embankment of the tailings storage facility at the Peak Complex is currently under construction.

Mining schedule

Mining development method and sequencing and general mine features.

Underground stope mining operations are undertaken at the Peak Complex and the New Cobar Complex.

Areas identified for emplacements, the sequencing of emplacements, construction, and management.

The tailings produced is deposited at the tailings storage facility located at the Peak Complex. The raising of the embankment of the tailings storage facility at the Peak Complex is currently under construction.

Processing infrastructure activities and the location of tailings facilities and schedule for emplacement

Ore processing and concentrate handling is undertaken at the Peak Complex with ore from the New Cobar Complex trucked to the processing facilities at the Peak Complex. Tailings produced is deposited at the tailings storage facility located at the Peak Complex.

Waste disposal and materials handling operations.

Waste management includes incorporating measures to ensure waste is appropriately reused, recycled or disposed. The primary aim of waste management is the prevention and avoidance of the generation of waste, recycling and the use of renewable and recycled materials. Waste generated at Peak Gold Mine is removed from site by a licenced waste contractor.

Key production milestones

MATERIAL	UNIT	YEAR 1	YEAR 2	YEAR 3
Stripped topsoil <small>(if applicable)</small>	(m ³)	0	0	0
Rock/overburden	(m ³)	0	0	0
Ore	(Mt)	0	0	0
Reject material¹	(Mt)	0	0	0
Product	(Mt)	0	0	0

¹ This includes coarse rejects, tailings and any other wastes resulting from beneficiation.

Three-year rehabilitation forecast

Rehabilitation planning schedule

Rehabilitation planning schedule

Rehabilitation Planning Schedule to include

- Stakeholder identification
- Stakeholder engagement
- Rehabilitation Project description
- Budget considerations
- Resource considerations
- Environmental approvals
- Landholder consent

Stakeholder consultation

Stakeholder consultation is proposed to be undertaken with the appropriate government agencies and landholders as a component of the rehabilitation planning activities.

Rehabilitation studies, risk assessments and/or design work

The following rehabilitation studies being carried out include

- column trials to assess the long term prediction of cover performance of potential cover materials for the tailings storage facility
- assessment of the kinetic geochemistry of potential cover materials for the tailings storage facility
- investigation of tailings geochemistry and timing of oxidation processes to result in acid rock drainage

PEAK GOLD MINE FORWARD PROGRAM

FWP0001068 | Thursday 29 September 2022 to Sunday 28 September 2025



Rehabilitation research and trials

RRT NUMBER	PROJECT/TRIAL NAME	OBJECTIVE OF TRIAL/PROJECT	METHODOLOGY	EXPECTED DATE OF COMPLETION	STATUS
------------	--------------------	----------------------------	-------------	-----------------------------	--------

FWP0001068

Rehabilitation maintenance and corrective actions

The rehabilitation planning schedule for the mine site will include stakeholder engagement, budget requirements, resource considerations, environmental approvals and landholder consent requirements to permit maintenance and corrective action measures to be undertaken to address rehabilitation performance issues identified in the annual rehabilitation report.

Rehabilitation schedule

Rehabilitation Planning Schedule will include

- Stakeholder identification
- Stakeholder engagement
- Rehabilitation Project description
- Budget considerations
- Resource considerations
- Environmental approvals
- Landholder consent

Subsidence remediation for underground operations

Low levels of monitoring such as annual survey pick-ups of key locations may be undertaken due to the negligible amount of subsidence expected.

Progressive mining and rehabilitation statistics

Three-yearly forecast cumulative disturbance and rehabilitation progression

FORECAST	UNIT	YEAR 1	YEAR 2	YEAR 3
A Total surface disturbance footprint	(ha)	368.47	368.47	368.47
B Total active disturbance	(ha)	286.17	286.17	286.17
C Land prepared for rehabilitation	(ha)	79.52	79.52	79.52
D Ecosystem and land use establishment	(ha)	4.33	9.55	19.01

Rehabilitation key performance indicators (KPIs)

FORECAST	UNIT	YEAR 1	YEAR 2	YEAR 3
O Total new active disturbance area	(ha)			
P Area proposed for active rehabilitation	(ha)	1.55	5.23	9.46
Q Annual rehabilitation to disturbance ratio				

Attachment 1 – Reporting Definitions

REPORTING CATEGORY	DEFINITION
<p>A Total disturbance footprint – surface disturbance</p>	<p>All areas within a mining lease that either have at some point in time or continue to pose a rehabilitation liability due to surface disturbance activities.</p> <p>The total disturbance footprint is the sum of the total active disturbance, decommissioning, landform establishment, growth medium development, ecosystem and land use establishment, ecosystem and land use development and rehabilitation completion (see definitions below).</p> <p>Underground mining operations should not include the footprint of underground mining areas/subsidence management areas in the total disturbance footprint.</p>
<p>B Total active disturbance</p>	<p>Includes on-lease exploration areas, stripped areas ahead of mining, infrastructure areas, water management infrastructure, sewage treatment facilities, topsoil stockpile areas, access tracks and haul roads, active mining areas, waste rock emplacements (active/unshaped/in or out-of-pit), tailings dams (active/unshaped/uncapped) and temporary stabilised areas (e.g. areas sown with temporary cover crops for dust mitigation and temporary rehabilitation).</p>
<p>C Rehabilitation – land preparation</p>	<p>Includes the sum of all disturbed land within a mining lease that have commenced any, or all, of the following phases of rehabilitation – decommissioning, landform establishment and growth medium development.</p> <p>Refer to the glossary of terms in this document for the definition of these phases of rehabilitation.</p>
<p>D Ecosystem and land use establishment</p>	<p>Includes the area which has been seeded/planted with the target vegetation species for the intended final land use. However, vegetation has not matured to a stage where it can be demonstrated that it will be sustainable for the long term and or require only a maintenance regime consistent with target reference/analogue sites.</p> <p>Typically, rehabilitation areas would be in this phase for at least two years (and usually more) before rehabilitation can be classified as being in the ecosystem and land use development phase. This phase does not apply to infrastructure areas that are being retained as part of final land use for the site.</p>

REPORTING CATEGORY	DEFINITION
O	The area of any new active disturbance that will be created during the next three years, as defined under definition A1 (definition A1 Table 5).
P	The sum of any new rehabilitation to be commenced in the next three years. These areas may be in the phases “Rehabilitation - Land Preparation” or the “Ecosystem & Land Use Establishment” (definitions C & D in Table 5).
Q	The rehabilitation to disturbance ratio (S / R) indicates how many hectares of new rehabilitation are undertaken for each hectare of land disturbed during the three years. A ratio of 1/1 indicates that the area of new rehabilitation and disturbance in that period are the same.

Attachment 2 – Definitions

WORD	DEFINITION
Active	In the context of rehabilitation, land associated with mining domains is considered ‘active’ for the period following disturbance until the commencement of rehabilitation.
Active mining phase of rehabilitation	In the context of rehabilitation, the active mining phase of rehabilitation constitutes the rehabilitation activities undertaken during mining operations such as salvaging and managing soil resources, salvaging habitat resources, and native seed collection. This phase also includes management actions taken during operations to manage risks to rehabilitation and enhance rehabilitation outcomes such as selective handling of waste rock and management of tailings emplacements.
Analogue site	In the context of rehabilitation, an analogue site is a ‘reference site’ that represents an example of the defining characteristics (such as vegetation composition and structure or agricultural productivity) of the final land use. Characteristics of analogue sites can be assessed to develop the rehabilitation objectives and completion criteria for final land use domains.
Annual rehabilitation report and forward program	As described in the Mining Regulation 2016.
Annual reporting period	As defined in the Mining Regulation 2016.
Closure	A whole-of-mine-life process, which typically culminates in the relinquishment of the mining lease. It includes decommissioning and rehabilitation to achieve the approved final land use(s).
Decommissioning	The process of removing mining infrastructure and removing contaminants and hazardous materials.
Decommissioning Phase of Rehabilitation	Activities associated with the removal of mining infrastructure and removal and/or remediation of contaminants and hazardous materials. In the context of the rehabilitation management plan this phase of rehabilitation may also include studies and assessments associated with decommissioning and demolition of infrastructure or works carried out to make safe or ‘fit for purpose’ built infrastructure to be retained for future use(s) following lease relinquishment.

WORD	DEFINITION
Department	The Department of Regional NSW.
Disturbance	See Surface Disturbance.
Disturbance area	<p>An area that has been disturbed and that requires rehabilitation.</p> <p>This may include areas such as on-licence exploration areas, stripped areas ahead of mining, infrastructure areas, water management infrastructure, sewage treatment facilities, topsoil stockpile areas, access tracks and haul roads, active mining areas, waste emplacements (active/unshaped/in or out-of-pit), tailings dams (active/unshaped/uncapped), and areas requiring rehabilitation that are temporarily stabilised (i.e. managed to minimise dust generation and/or erosion).</p>
Domain	<p>An area (or areas) of the land that has been disturbed by mining and has a specific operational use (mining domain) or specific final land use (final land use domain). Land within a domain typically has similar geochemical and/or geophysical characteristics and therefore requires specific rehabilitation activities to achieve the associated final land use.</p>
Ecosystem and Land Use Development	<p>This phase of rehabilitation consists of the activities to manage maturing rehabilitation areas on a trajectory to achieving the approved rehabilitation objectives and completion criteria.</p> <p>For vegetated land uses this phase may include processes to develop characteristics of functional self-sustaining ecosystems, such as nutrient recycling, vegetation flowering and reproduction, and increasing habitat complexity, and development of a productive, self-sustaining soil profile.</p> <p>This phase of rehabilitation may include specific vegetation management strategies and maintenance such as tree thinning, supplementary plantings and weed management.</p>
Ecosystem and Land Use Establishment	<p>This phase of rehabilitation consists of the processes to establish the approved final land use following construction of the final landform.</p> <p>For vegetated land uses this rehabilitation phase includes establishing the desired vegetation community and implementing land management activities such as weed control. This phase of rehabilitation may also include habitat augmentation such as installation of nest boxes.</p>
Exploration	Has the same meaning as that term under the State Environmental Planning Policy (Mining, Petroleum Production and Extractive Industries) 2007.

WORD	DEFINITION
Final landform and rehabilitation plan	As defined in the Mining Regulation 2016.
Final land use	As defined in the Mining Regulation 2016.
Form and way	Means the form and way approved by the Secretary. Approved form and way documents are available on the Department’s website.
Growth Medium Development	<p>This phase of rehabilitation consists of activities required to establish the physical, chemical and biological components of the substrate required to establish the desired vegetation community (including short lived pioneer species).</p> <p>This phase may include spreading the prepared landform with topsoil and/or subsoil and/or soil substitutes, applying soil ameliorants to enhance the physical, chemical and biological characteristics of the growth media, and actions to minimise loss of growth media due to erosion.</p>
Habitat	Has the same meaning as that term under the <i>Biodiversity Conservation Act 2016</i> and the <i>Fisheries Management Act 1994</i> (as relevant).
Indicator	An attribute of the biophysical environment (e.g. pH, topsoil depth, biomass) that can be used to approximate the progression of a biophysical process. It can be measured and audited to demonstrate (and track) the progress of an aspect of rehabilitation towards a desired completion criterion (i.e. defined end point). It may be aligned to an established protocol and used to evaluate changes in a system.
Land	As defined in the <i>Mining Act 1992</i> .
Landform Establishment	<p>This phase of rehabilitation consists of the processes and activities required to construct the final landform.</p> <p>In addition to profiling the surface of rehabilitation areas to the approved final landform profile this phase may include works to construct surface water drainage features, encapsulate problematic materials such as tailings, and prepare a substrate with the desired physical and chemical characteristics (e.g. rock raking or ameliorating sodic materials).</p>
Large mine	As defined in the Mining Regulation 2016.
Lease holder	The holder of a mining lease.

WORD	DEFINITION
Life of mine	The timeframe of how long a mine is approved to mine, from commencement to closure.
Mine rehabilitation portal	<p>Means the NSW Resources Regulator’s online portal that lease holders must use (via a registered account) to:</p> <ul style="list-style-type: none"> ■ upload rehabilitation geographical information system (GIS) spatial data ■ develop rehabilitation GIS spatial data (using online tracing functions) ■ generate rehabilitation plans and rehabilitation statistics using the map viewer and Rehabilitation Key Performance Indicator functionalities. <p>Data submitted to the mine rehabilitation portal is collated in a centralised geodatabase for use by the NSW Resources Regulator to regulate rehabilitation performance of lease holders.</p>
Mining area	As defined in the <i>Mining Act 1992</i> .
Mining domain	A land management unit with a discrete operational function (e.g. overburden emplacement), and therefore similar geophysical characteristics, that will require specific rehabilitation treatments to achieve the final land use(s).
Mining land	As defined in the <i>Mining Act 1992</i> .
Native vegetation	Has the same meaning as that term under section 60B of the <i>Local Land Services Act 2013</i> .
Overburden	Material overlying coal or a mineral deposit.
Performance indicator	An attribute of the biophysical environment (for example pH, slope, topsoil depth, biomass) that can be used to demonstrate achievement of a rehabilitation objective. It can be measured and audited to demonstrate (and track) the progress of an aspect of rehabilitation towards a desired completion criterion, that is, a defined end point. It may be aligned to an established protocol and used to evaluate changes in a system.

WORD	DEFINITION
Phases of rehabilitation	<p>The stages and sequences of actions required to rehabilitate disturbed land to achieve the final land use. The phases of rehabilitation are:</p> <ul style="list-style-type: none"> ■ active mining ■ decommissioning ■ landform Establishment ■ growth medium development ■ ecosystem and land use establishment ■ ecosystem and land use development.
Progressive rehabilitation	<p>The progress of rehabilitation towards achieving the approved rehabilitation completion criteria. This may be described in terms of domains, phases, performance indicators and rehabilitation completion criteria.</p>
Rehabilitation Completion	<p>The final phase of rehabilitation when a rehabilitation area has achieved the approved rehabilitation objectives and rehabilitation completion criteria for the final land use. Rehabilitation areas may be classified as complete when the NSW Resources Regulator has determined in writing that the relevant rehabilitation obligations have been fulfilled following submission of <i>Form ESF2 Rehabilitation completion and/or review of rehabilitation cost estimate</i> application by the lease holder.</p>
Rehabilitation Completion criteria	<p>As defined in the Mining Regulation 2016.</p>
Rehabilitation cost estimate	<p>As defined in the Mining Regulation 2016.</p>
Rehabilitation management plan	<p>As defined in the Mining Regulation 2016.</p>
Rehabilitation objectives	<p>As defined in the Mining Regulation 2016.</p>
Rehabilitation risk assessment	<p>As defined in the Mining Regulation 2016.</p>
Rehabilitation schedule	<p>The defined timeframes for progressive rehabilitation set out in the forward program.</p>

WORD	DEFINITION
Relevant stakeholders	Means any persons or bodies who may be affected by the mining operations, including rehabilitation, carried out on the lease land, and includes: <ul style="list-style-type: none"> ■ the relevant development consent authority ■ the local council ■ the relevant landholder(s) ■ community consultative committee (if required under the development consent) or equivalent consultative group ■ affected land holder(s) ■ government agencies relevant to the final land use ■ affected infrastructure authorities (electricity, telecommunications, water, pipeline, road, rail authorities) ■ local Aboriginal communities, and ■ any other person or body determined by the Minister to be a relevant stakeholder in relation to a mining lease.
Risk	The effect of uncertainty on objectives. It is measured in terms of consequences and likelihood (AS/NZS ISO 31000:2009).
Secretary	The Secretary of the Department.
Security deposit	An amount that a mining lease holder is required to provide and maintain under a mining lease condition, to secure funding for the fulfilment of obligations under the lease (including obligations that may arise in the future).
Surface disturbance	Includes activities that disturb the surface of the mining area, including mining operations, ancillary mining activities and exploration.
Tailings	A combination of the fine-grained solid material remaining after the recoverable metals and minerals have been extracted from the mined ore, and any process water ² .
Waste	Has the same meaning as that term under the <i>Protection of the Environment Operations Act 1997</i> .

² Commonwealth of Australia (DITR), 2007. *Tailings Management*.

Attachment 3 – Plans

Plan 2A Mining and Rehabilitation Year 1.pdf

Plan 2B Mining and Rehabilitation Year 2.pdf

Plan 2C Mining and Rehabilitation Year 3.pdf

Forward Program (LARGE MINE) v2.1

**AURELIA METALS
REHABILITATION MANAGEMENT**

**PEAK GOLD MINE
CML7**

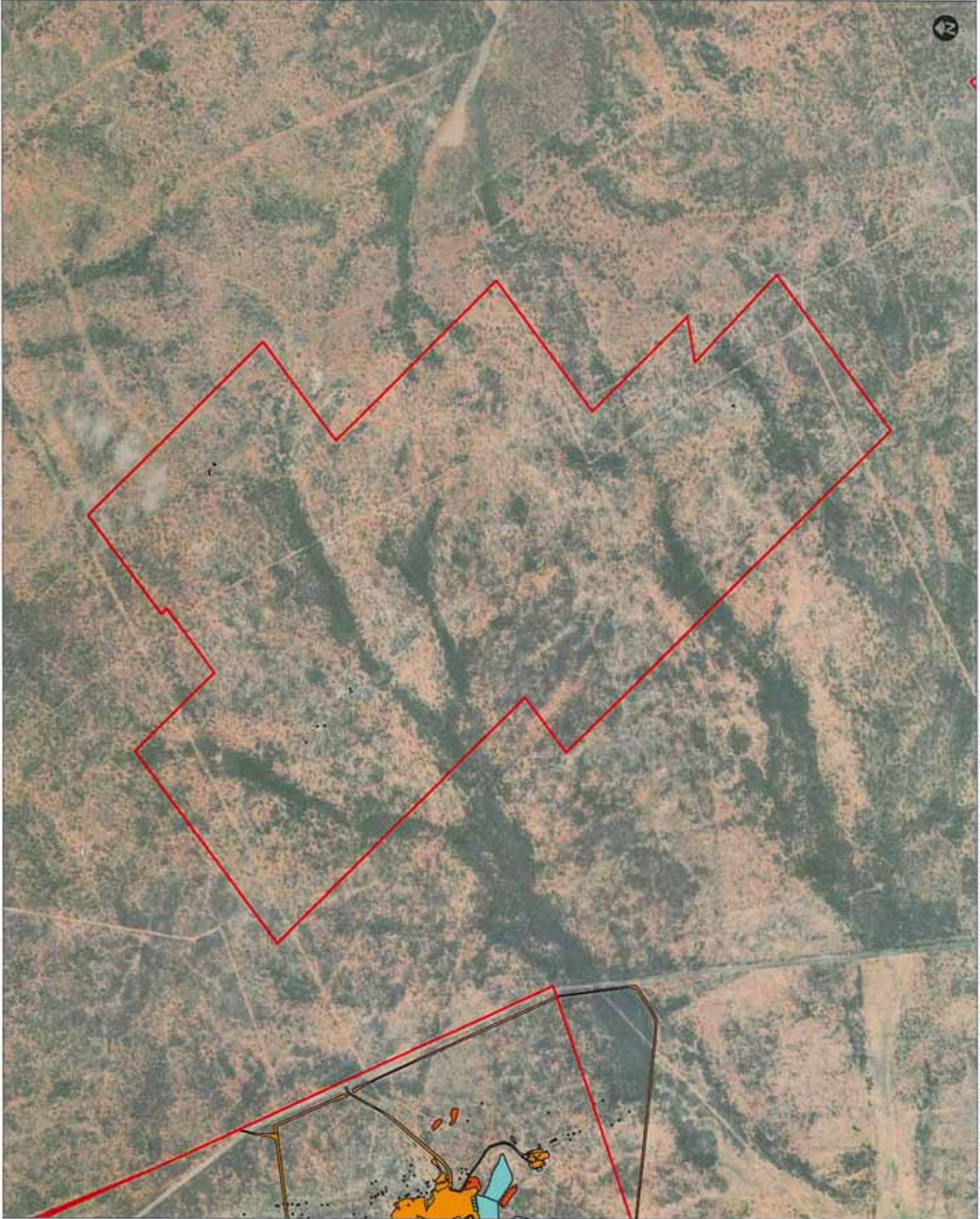
YEAR 2023

**PLAN 2A
MINING AND REHABILITATION
YEAR 1**

- Project Approval Boundary
- Forecast Area
- Ecosystems and Land Use Establishment
- Disturbance
- Beneficiation Facility
- Infrastructure Area
- Other
- Overburden Placement Area
- Tailings Storage Facility
- Underground Mining Area (SMP)
- Active Mining Area (Open cut void)
- Water Management Area
- Rehabilitation Phase
- Decommissioning
- Landform Establishment
- Growth Media Development
- Ecosystem and Land Use Establishment
- Ecosystem and Land Use Development
- Reinstatement (Rehabilitated)
- Rehabilitation Completion



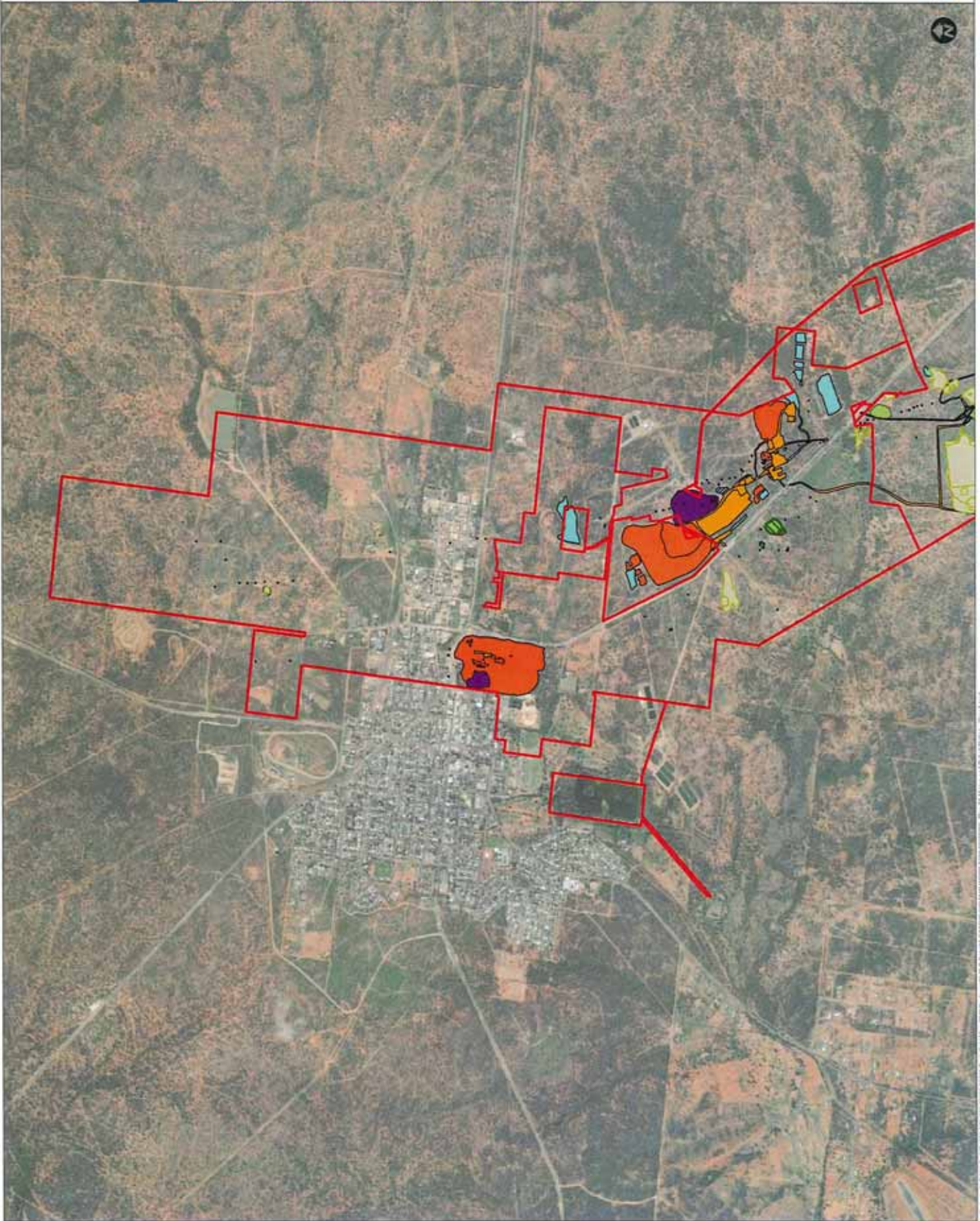
Coordinate System:	GDAL2020
Scale:	1:25,000 @A3
Project Number:	ES0-2023S
Date:	26-Jul-2022
Drawn by:	PM



- Project Approval Boundary
- Forecast Area
- Ecosystem and Land Use Establishment
- Disturbance
- Rehabilitation Facility
- Infrastructure Area
- Other
- Overburden Employment Area
- Tailings Storage Facility
- Underground Mining Area (SMP)
- Active Mining Area (Open cut pits)
- Water Management Area
- Rehabilitation Phase
- Decommissioning
- Landform Establishment
- Growth Media Development
- Ecosystem and Land Use Establishment
- Ecosystem and Land Use Development
- Reinquinishment (Rehabilitated)
- Rehabilitation Completion



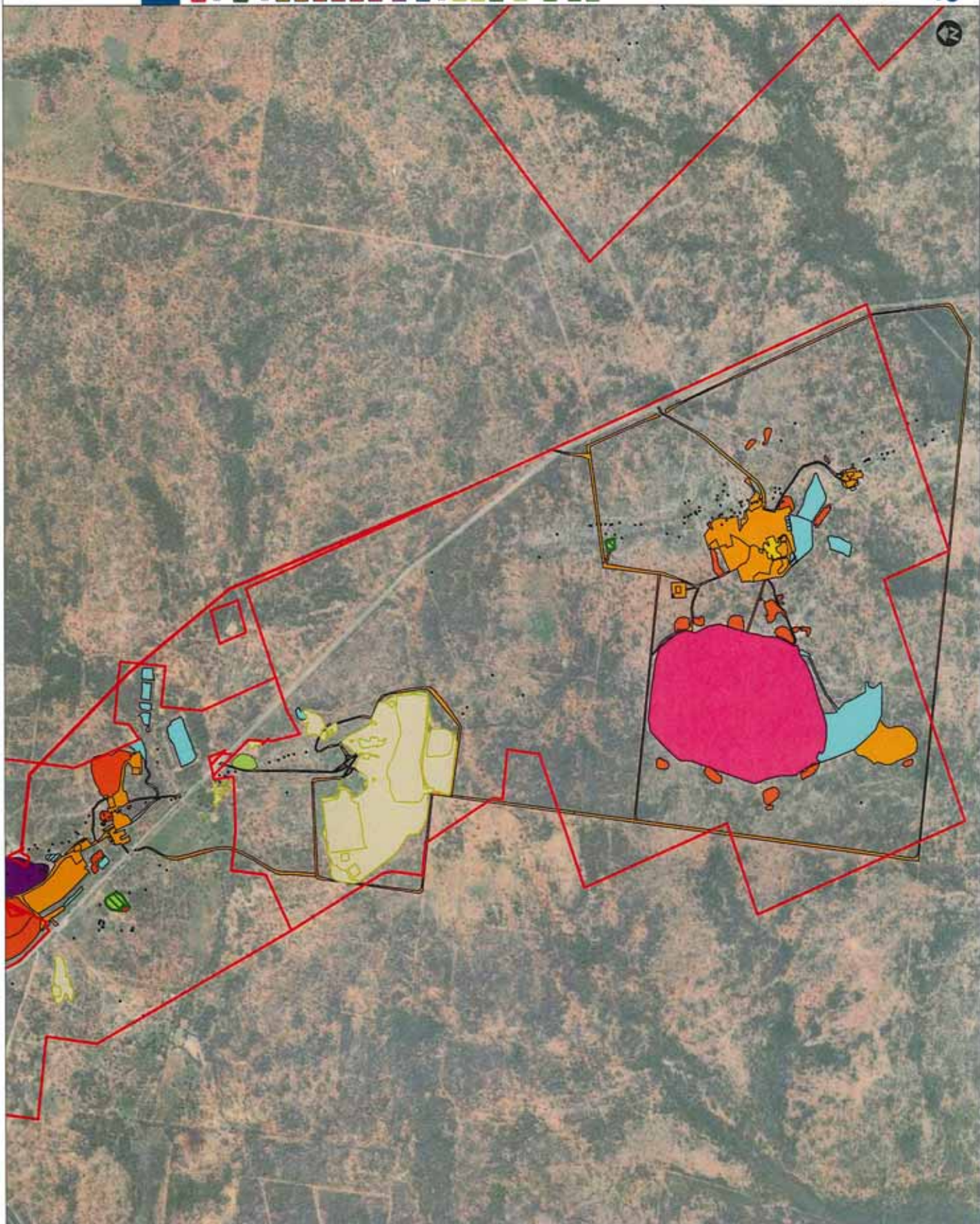
Coordinate System:	GDA2020
Scale:	1:30,000 PAU
Project Number:	620-20285
Date:	28-Jul-2022
Drawn by:	PH



- Project Approval Boundary
- Forecast Area
- Ecosystem and Land Use Establishment
- Disturbance
- Beneficiation Facility
- Infrastructure Area
- Other
- Overburden Emplacement Area
- Tailings Storage Facility
- Underground Mining Area (SMP)
- Active Mining Area (Open cut void)
- Water Management Area
- Rehabilitation Phase
- Decommissioning
- Landform Establishment
- Growth Media Development
- Ecosystem and Land Use Establishment
- Ecosystem and Land Use Development
- Requiring (Rehabilitated)
- Rehabilitation Completion



Coordinate System:	GGN02029
Scale:	1:25,000 #A3
Project Number:	830.20285
Date:	26-Jul-2022
Drawn by:	PM



















- Project Approval Boundary
- Disturbance
- Beneficiation Facility
- Infrastructure Area
- Other
- Overburden Replacement Area
- Tailings Storage Facility
- Underground Mining Area (SMP)
- Active Mining Area (Open cut void)
- Water Management Area
- Rehabilitation Phase
- Decommissioning
- Landform Establishment
- Growth Media Development
- Ecosystem and Land Use Establishment
- Ecosystem and Land Use Development
- Relinquishment (Rehabilitated)
- Rehabilitation Completion



Coordinate System	QDA2020
Scale	1:15,000 at A3
Project Number	820-20203
Date	26-Jul-2022
Drawn by:	PM



-  Project Approval Boundary
- Disturbance**
-  Beneficiation Facility
-  Infrastructure Area
-  Other
-  Overburden Placement Area
-  Tailings Storage Facility
-  Underground Mining Area (SMP)
-  Active Mining Area (Open cut void)
-  Water Management Area
- Rehabilitation Phase**
-  Decommissioning
-  Landform Establishment
-  Growth Media Development
-  Ecosystem and Land Use Establishment
-  Ecosystem and Land Use Development
-  Reinstatement (Rehabilitated)
-  Rehabilitation Completion



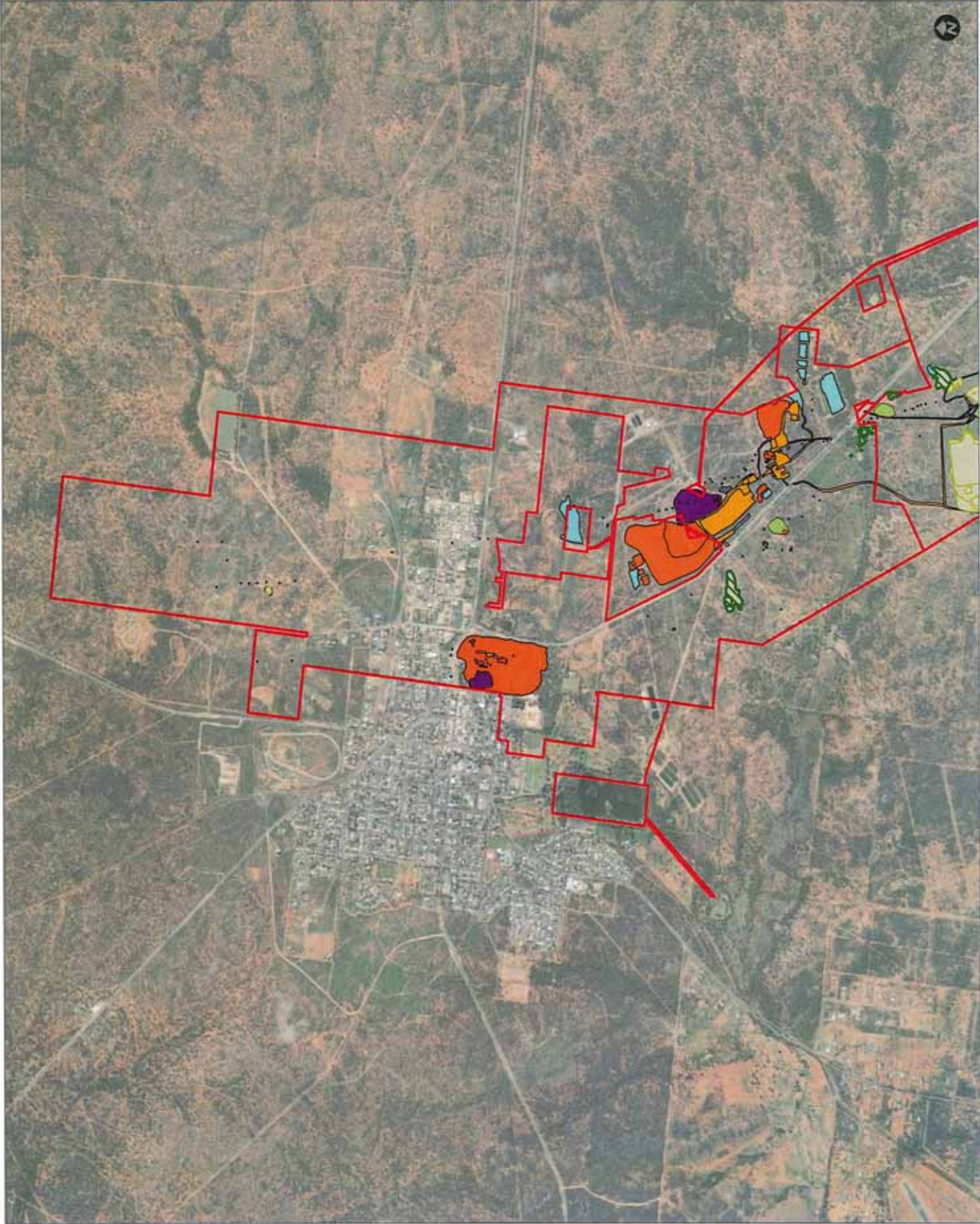
Coordinate System:	GDA2020
Scale:	1:25,000 MAF3
Project Number:	63030005
Date:	26-Jul-2022
Drawn by:	PH



- Project Approval Boundary
- Disturbance
- Remediation Facility
- Infrastructure Area
- Other
- Overburden Emplacement Area
- Tailings Storage Facility
- Underground Mining Area (SMP)
- Active Mining Area (Open cut pits)
- Water Management Area
- Rehabilitation Phase
- Decommissioning
- Landform Establishment
- Growth Media Development
- Ecosystem and Land Use Establishment
- Ecosystem and Land Use Development
- Reforestation (Rehabilitated)
- Rehabilitation Completion
- Forecast Area
- Ecosystem and Land Use Establishment



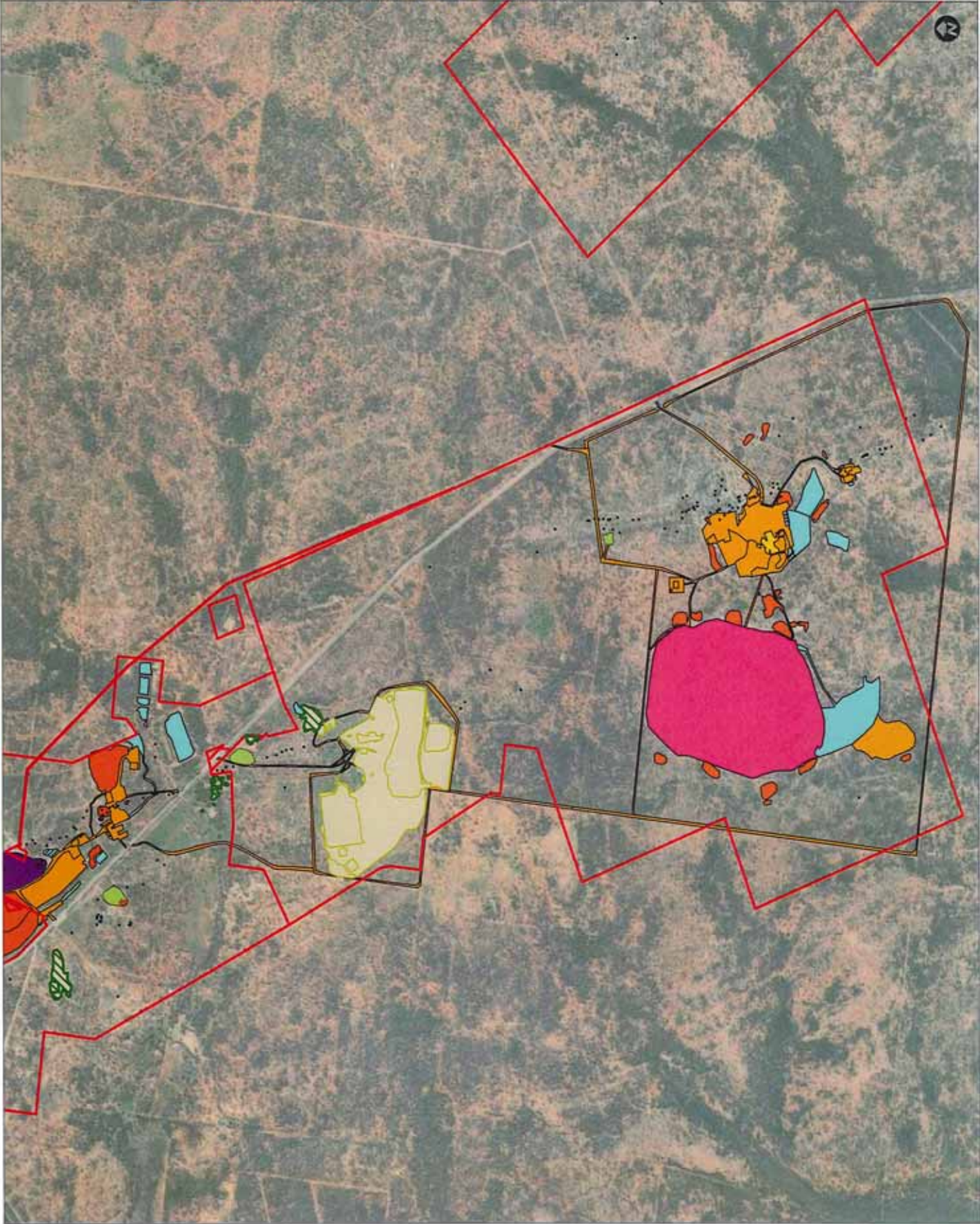
Coordinate System	GDA2020
Scale	1:30,000 @ A3
Project Number	820-20205
Date	28-Jul-2022
Drawn by:	PM



- Project Approval Boundary
- Disturbance
- Beneficiation Facility
- Infrastructure Area
- Other
- Overburden Emplacement Area
- Tailings Storage Facility
- Underground Mining Area (SMIP)
- Active Mining Area (Open cut pits)
- Water Management Area
- Rehabilitation Phase
- Decommissioning
- Landform Establishment
- Growth Media Development
- Ecosystem and Land Use Establishment
- Ecosystem and Land Use Development
- Reinstatement (Rehabilitated)
- Rehabilitation Completion
- Forecast Area**
- Ecosystem and Land Use Establishment



Coordinate System	GDA2020
Scale	1:25,000 - M.A.S
Project Number	630/2024S
Date	28-Jul-2022
Drawn by:	PM



- Project Approval Boundary
- Disturbance
- Beneficiation Facility
- Infrastructure Area
- Other
- Overburden Emplacement Area
- Tailings Storage Facility
- Underground Mining Area (SMP)
- Active Mining Area (Open cut void)
- Water Management Area
- Rehabilitation Phase
- Decommissioning
- Landform Establishment
- Growth Media Development
- Ecosystem and Land Use Establishment
- Ecosystem and Land Use Development
- Reinstatement (Rehabilitated)
- Rehabilitation Completion



Coordinate System	GDA2020
Scale	1:10,000 @A3
Project Number	020-20205
Date	28-Jul-2022
Drawn by	PN



**AURELIA METALS
REHABILITATION MANAGEMENT**

**PEAK GOLD MINE
CML7**

YEAR 2025

**PLAN 2C.
MINING AND REHABILITATION
YEAR 3**

- Project Approval Boundary
- Disturbance
- Beneficiation Facility
- Infrastructure Area
- Other
- Overburden Emplacement Area
- Tailings Storage Facility
- Underground Mining Area (Solary void)
- Active Mining Area (Open cut void)
- Water Management Area
- Rehabilitation Phase
- Decommissioning
- Landform Establishment
- Growth Media Development
- Ecosystem and Land Use Establishment
- Ecosystem and Land Use Development
- Reinstatement (Rehabilitated)
- Rehabilitation Completion



Coordinate System:	CRS:2020
Scale:	1:25,000 - rd A3
Project Number:	000.30005
Date:	01-Aug-2022
Drawn by:	PM



**AURELIA METALS
REHABILITATION MANAGEMENT**

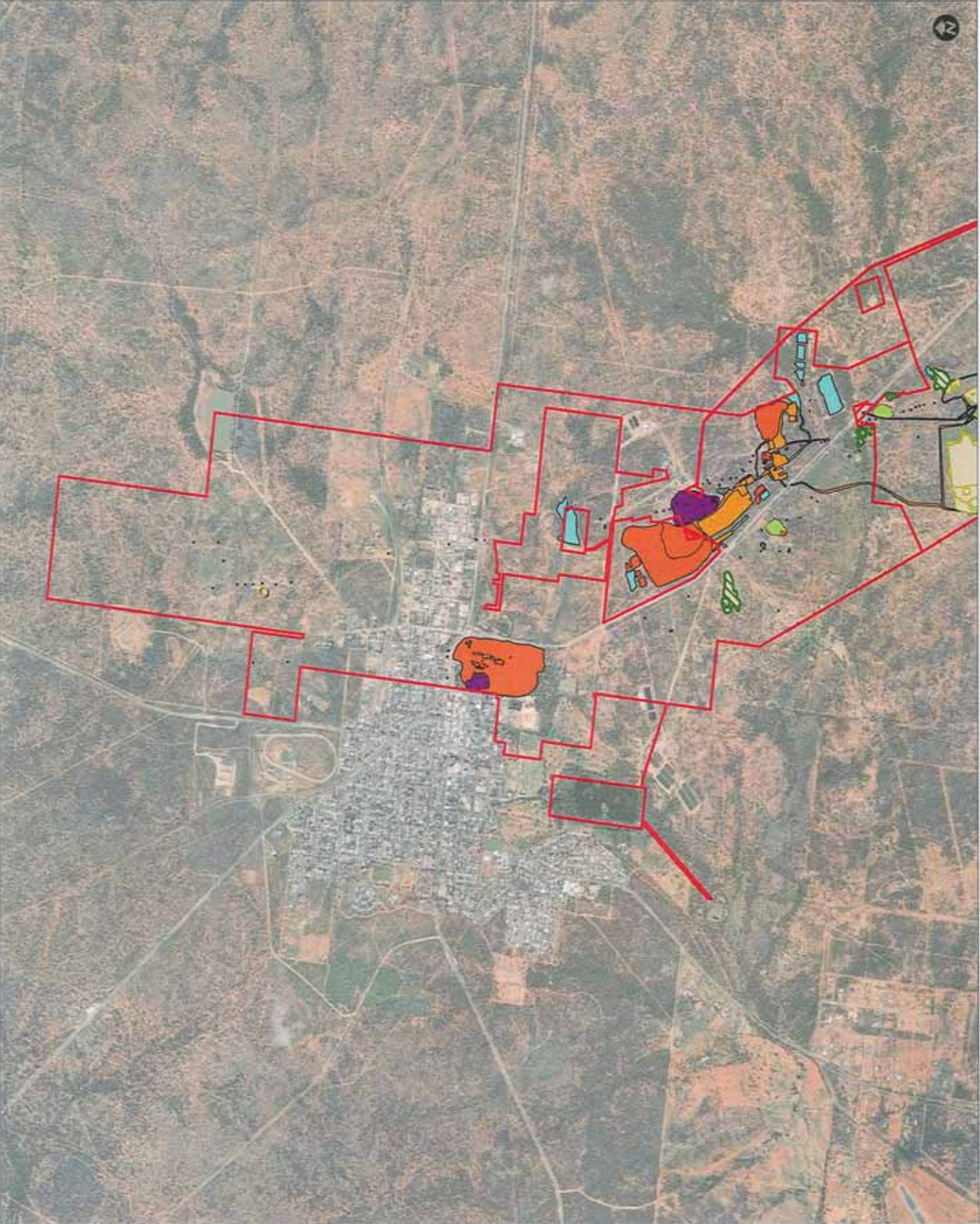
**PEAK GOLD MINE
GLADSTONE
YEAR 2025**

**PLAN 2C.
MINING AND REHABILITATION
YEAR 3**

- Project Approval Boundary
- Disturbance
- Beneficiation Facility
- Infrastructure Area
- Other
- Overburden Emplacement Area
- Tailings Storage Facility
- Underground Mining Area (SKMP)
- Active Mining Area (Open cut void)
- Water Management Area
- Rehabilitation Phase
- Decommissioning
- Landform Establishment
- Growth Media Development
- Ecosystem and Land Use Establishment
- Ecosystem and Land Use Development
- Reinstatement (Rehabilitated)
- Rehabilitation Completion
- Forecast Area**
- Ecosystem and Land Use Establishment



Coordinate System:	GDA2020
Scale:	1:50,000 at A3
Project Number:	ESD-30205
Date:	01-Aug-2022
Drawn by:	FM























C:\Projects\ESD\ESD-30205\2022\0801\Peak Gold Mine\ESD\ESD-30205_Plan 2C Mining and Rehabilitation - Year 3.mxd
 Project Number: ESD-30205 Date: 01-Aug-2022 Drawn by: FM

**AURELIA METALS
REHABILITATION MANAGEMENT**

**PEAK GOLD MINE
QUEEN BEE
YEAR 2025**

**PLAN 2C.
MINING AND REHABILITATION
YEAR 3**

-  Project Approval Boundary
-  Disturbance
-  Beneficiation Facility
-  Infrastructure Area
-  Other
-  Overburden Emplacement Area
-  Tailings Storage Facility
-  Underground Mining Area (SMP)
-  Active Mining Area (Open cut void)
-  Water Management Area
-  Rehabilitation Phase
-  Decommissioning
-  Landform Establishment
-  Growth Media Development
-  Ecosystem and Land Use Establishment
-  Ecosystem and Land Use Development
-  Revegetation (Rehabilitated)
-  Rehabilitation Completion
-  Forcast Area
-  Ecosystem and Land Use Establishment



Coordinate System:	GDA2020
Scale:	1:10,000 at A3
Project Number:	630132081
Date:	01-Aug-2022
Drawn by:	PM

