

Peak Gold Mines
MONTHLY ENVIRONMENTAL MONITORING SUMMARY
REPORT

EPL 3596
Hillston Road, Cobar
NSW 2835

September 2021

Contents

1. INTENT	3
2. SCOPE	3
3. DEFINITIONS	3
4. MONITORING RESULTS	4
4.1. VIBRATION	4
4.2. AIR QUALITY	5
4.3. NOISE	7
4.4. WATER	9
4.5. HAULAGE MOVEMENTS	9
4.6. WEATHER	10

1. INTENT

This monthly environmental summary report is a requirement under section 66(6) of the NSW Protection of the Environment Operations Act 1997 (POEO Act), in which holders of an environment protection licence make their pollution monitoring data publicly available. This report is intended to keep the community, stakeholders, and regulators informed of Peak Gold Mine's (PGM's) environmental performance and to maintain a transparent and accountable reporting system.

2. SCOPE

This report covers all of PGMs environmental monitoring conditions covered for September 2021. These conditions, where applicable, are measured against PGMs Environmental Protection Licence (EPL), development consent conditions and Australian Standard to determine PGMs compliance. The conditions include;

- Blasting monitoring results;
- Air Quality Monitoring results;
- Noise Monitoring results;
- Surface Water Monitoring results; and
- Weather Conditions.

3. DEFINITIONS

mm/s – the peak of the vibration in millimetres per second

Insoluble Solids – the insoluble portion of the dust deposition

Total Lead – Including dissolved lead in the liquid portion and the lead particulates in the filter paper following laboratory analysis

g/m²/month – grams per square meter per month

dB (L) – decibel (linear maximum)

dB LAeq (15 minute) – Decibel (linear weighted average over 15 minutes)

CN Free – Free Cyanide (hydrogen cyanide and cyanide ions in solution)

CN WAD – Weak Acid Dissociable Cyanide (includes cyanide species liberated at moderate pH of 4.5)

TSS – Total Suspended Solids

4. MONITORING RESULTS

4.1. VIBRATION

The vibration monitoring results displayed in Table 4.1a represents all blast vibration events that were triggered at the New Occidental, Fort Bourke and/or Dellavale monitors (Figure 1).

As seen in Table 4.1a all blasting events for the month were below PGMs EPL limits. Vibration limits set by the NSW Environmental Protection Authority (EPA) can be viewed in Table 4.1b.

The compliance against the overall 12-month period will be reported in the EPL Annual Return and Annual Environmental Management Report (AEMR).

Table 4.1a New Occidental, Fort Bourke and Dellavale Vibration Results

Location	Date Sampled & Received	ID	New Occidental (mm/s)	Fort Bourke (mm/s)	Dellavale (mm/s)	Complies (Y/N)
Peak	02/09/21	9300 765 550	No Trigger	No Trigger	No Trigger	Y
Peak	05/09/21	9300 765 550	No Trigger	No Trigger	No Trigger	Y
New Cobar	10/09/21	37 NTH 530	No Trigger	0.904	No Trigger	Y
New Cobar	12/09/21	41 NTH 475	No Trigger	1.786	No Trigger	Y
Peak	18/09/21	S4U_9101_710_435	No Trigger	No Trigger	No Trigger	Y
Peak	26/09/21	S4U_9101_710_435	No Trigger	No Trigger	No Trigger	Y

Table 4.1b PGM EPL Limits

Peak Particle Velocity (mm/s)	Allowable Exceedance
5.00	<5% of the total number of blasts in a 12 month period are to be above 5mm/s
10.00	NIL



Figure 1: Location of Vibration Monitors on PGM's Mining Leases.

4.2. AIR QUALITY

Fall out dust deposition bottles are currently used to monitor air quality. The bottles are positioned in the field (Figure 2) for a period of 30 ± 2 days. Monitoring is undertaken quarterly. The bottles are then sent to Australian Laboratory Services (ALS) for external analysis.

PGM has no set limits for air quality monitoring levels. However, PGM takes on board the EPA's best practice limit of $4\text{g}/\text{m}^2/\text{time}$ (limit is applicable to a 12-month averaging period). If the 12-month rolling average of a result is greater than $4\text{g}/\text{m}^2/\text{time}$, the cause will be investigated and reported in the AEMR.

Table 4.2a Air Quality Results

Site	Location	Date			Australian Standard Limit (g/m ² /month)	Insoluble Solids (g/m ² /month)	Total Lead (g/m ² /month)	Complies
		Sampled	Obtained	Published				
DM1	NW corner of tailings dam	03/09/21-05/10/21	19/10/21	20/10/21	4	0.8	0.000292	Y
DM2	SW corner of tailings dam	03/09/21-05/10/21	19/10/21	20/10/21	4	1.4	0.000677	Y
DM3	Carpark	03/09/21-05/10/21	19/10/21	20/10/21	4	2.4	0.037400	Y
DM4	NE corner of PGM magazine	03/09/21-05/10/21	19/10/21	20/10/21	4	1.5	0.003690	Y
Dellavale	1.3km ESE of New Cobar	03/09/21-05/10/21	19/10/21	20/10/21	4	0.6	0.000509	Y
Bimbimbie	1.2km SW of New Cobar	03/09/21-05/10/21	19/10/21	20/10/21	4	3.0	0.000120	Y

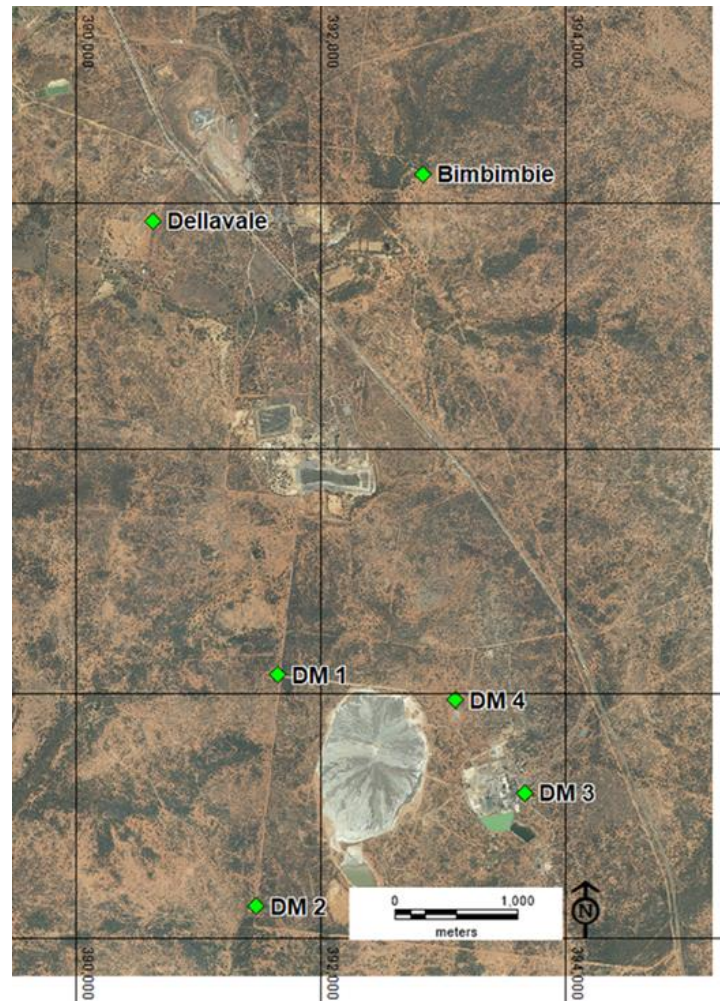


Figure 2: Location of dust gauges on PGM Mining Leases.

4.3. NOISE

A hand-held monitor is used by PGM employees to monitor noise levels at times set out by the EPL and development consent conditions. Noise monitoring is conducted at the closest resident (figure 3) and sporadically depending on operational requirements. PGMs closest monitoring point is located at the Dellavale boundary, approximately 400m closer to the mine noise than the residence. To determine the noise level (dB) experienced at the residence, sound intensity I and the inverse square law $1/r^2$ is calculated based on the residences distance from mine noise source.

Noise monitoring results and licenced noise limits set by the EPL and development consent conditions are given in Table 4.3a respectively.

Table 4.3a Attended Noise Monitoring Results

Location	Date Sampled & Obtained	Date Published	Time	LA 10 (dB) Limit	LA 10 (dB) Monitoring Result at Monitor Location	LA 10 (dB) Calculated Monitoring Result at Residence	Key Noise Source	Complies
Dellavale	23/09/2021	24/09/2021	9.50pm	45	42.7	38.7	Birds chirping.	YES

Table 4.3b Noise Monitoring

Time Band	Day	Noise Level (dB)
8:00am - 6:00pm	Mon - Fri	45
6:00pm - 10:00pm	Mon - Fri	40
10:00pm - 8:00am	Mon - Fri	35
8:00am - 1:00pm	Sat	45
1:00pm - 8:00am	Sat	35
12:00am - 12:00pm	Sun	35

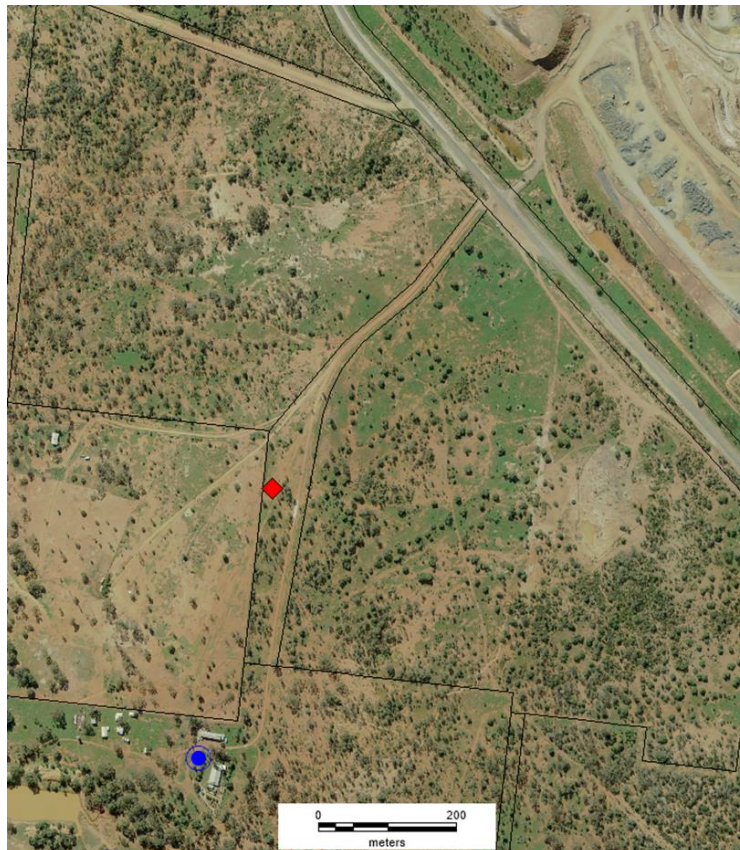


Figure 3: Location of the "Dellavale" properties house (blue circle) and noise monitoring location (red diamond).

4.4. WATER

Surface water monitoring involves collecting water samples from a number of locations around site. The water samples are submitted to a NATA accredited laboratory for physical and chemical analysis. Analysis of pH and electrical conductivity are obtained in the field using a handheld monitor. Table 4.4 gives the results as per the PGM EPL requirements.

Table 4.4 Water Monitoring Data

Point	Sampled	Received	Published	Limit	WAD CN (mg/L)	CN Free (mg/L)	TSS (mg/L)	Oil & Grease	Complies
Recycled Water Dam	22/09/21	05/10/21	13/09/21	No Limit	0.004	0.004	6	*	Yes
Raw Water Tank	22/09/21	05/10/21	13/09/21	No Limit	0.004	0.004	41	*	Yes
Spain's Dam	22/09/21	05/10/21	13/09/21	No Limit	*	*	<5	<5	Yes
Decant Dam	22/09/21	05/10/21	13/09/21	No Limit	0.1	0.1	<5	*	Yes

*No monitoring required.

4.5. HAULAGE MOVEMENTS

PGM is required to monitor the number of haulage movements undertaken from New Cobar to Peak site as per current consent conditions. A trucking movement includes the travel from New Cobar to Peak site and return to New Cobar. In the month of September, 750 truck movements were permitted to be undertaken. In total, 134 truckloads were completed. Table 4.5 shows a summary of the trucking movements for the month.

Table 4.5 Haulage Summary

Date	Truck Movements
01-09-21	0
02-09-21	0
03-09-21	0
04-09-21	0
05-09-21	0
06-09-21	0
07-09-21	0
08-09-21	0
09-09-21	10
10-09-21	10
11-09-21	0
12-09-21	0

13-09-21	12
14-09-21	13
15-09-21	7
16-09-21	0
17-09-21	10
18-09-21	0
19-09-21	0
20-09-21	10
21-09-21	10
22-09-21	6
23-09-21	11
24-09-21	12
25-09-21	0
26-09-21	0
27-09-21	10
28-09-21	13
29-09-21	0
30-09-21	0
Daily Average	4.6

4.6. WEATHER

The meteorology monitoring data is acquired through PGM’s weather station located 2km South of Cobar.

The BOM website can also be used as an alternate source for this monitoring data.

