

# PEAK GOLD MINES

## MONTHLY ENVIRONMENTAL SUMMARIES

### May 2015

<b>Prepared By</b>	Peak Gold Mines
<b>Signature</b>	<b>Jenna Marett</b>
<b>Date</b>	24/06/2015
<b>Distribution</b>	New Gold Internet <a href="http://www.newgold.com">www.newgold.com</a>

# Table of Contents

<b>INTENT:</b> .....	<b>3</b>
<b>SCOPE:</b> .....	<b>3</b>
<b>DEFINITIONS:</b> .....	<b>3</b>
<b>MONITORING RESULTS:</b> .....	<b>4</b>
Vibration Monitoring Results: .....	<b>4</b>
Air Quality Monitoring Results: .....	<b>5</b>
Attended Noise Monitoring Results: .....	<b>6</b>
Water Monitoring Results: .....	<b>7</b>
Weather Data Results: .....	<b>8</b>

## 1. INTENT

This monthly environmental summary report is a requirement under section 66(6) of the *Protection of the Environment Operations Act 1997* (POEO Act), in which holders of an environment protection licence make their pollution monitoring data publicly available. This report is intended to keep the community, stakeholders, and regulators informed of PGM’s environmental performance and to maintain a transparent and accountable reporting system.

## 2. SCOPE

This report covers all of PGMs environmental monitoring conditions covered for May 2015. These conditions, where applicable, are measured against PGMs Environmental Protection Licence (EPL), development consent conditions and Australian Standard to determine PGMs compliance. The conditions include;

- Blasting monitoring results
- Air Quality Monitoring results;
- Noise Monitoring results;
- Surface Water Monitoring results;
- Weather Conditions.

## 3. DEFINITIONS

**mm/s** – the peak of the vibration in millimetres per second

**Insoluble Solids** – the insoluble portion of the dust deposition

**Total Lead** – Including dissolved lead in the liquid portion and the lead particulates in the filter paper following laboratory analysis

**g/m<sup>2</sup>/month** – grams per square meter per month

**dB (L)** – decibel (linear maximum)

**dB LAeq(15 minute)** – Decibel (linear weighted average over 15 minutes)

**CN Free** – Free Cyanide (hydrogen cyanide and cyanide ions in solution)

**CN WAD** – Weak Acid Dissociable Cyanide (includes cyanide species liberated at moderate pH of 4.5)

**TSS** – Total Suspended Solids

## 4. MONITORING RESULTS

### 4.1 Vibration Monitoring Results

The vibration monitoring results displayed in Table 4.1a represents all blast vibration events that were triggered at the New Occidental and/or Fort Bourke monitors. The New Gold Internet link on the cover page contains the full dataset for EPL licenced monitoring locations.

As seen in Table 4.1a all blasting events for the month were below PGMs EPL limits. Vibration limits set by the Environmental Protection Authority (EPA) can be viewed in Table 4.1b.

The compliance against the overall 12 month period will be reported in the EPL Annual Return and Annual Environmental Management Report (AEMR).

**Table 4.1a New Occidental and Fort Bourke Vibration Result**

Location	Date Sampled & Received	Blast ID	Development / Production	New Occidental (mm/s)	Fort Bourke (mm/s)	Complies (Y/N)
New Cobar	7/05/2015	46StpMainS120	Production	No Trigger	3.44	Yes
New Cobar	10/05/2015	51StpMainN240	Production	No Trigger	1.47	Yes
New Cobar	14/05/2015	51StpMainN240	Production	No Trigger	1.99	Yes
New Cobar	22/05/2015	56RAD	Production	No Trigger	0.87	Yes
New Cobar	24/05/2015	46StpMainS120	Production	No Trigger	3.39	Yes
New Cobar	25/05/2015	9870StpMainN435	Production	No Trigger	0.9	Yes
New Cobar	26/05/2015	56RAD	Production	No Trigger	1.06	Yes

**Table 4.1b PGMs EPL Limits for Vibration**

Peak Particle Velocity (mm/s)	Allowable Exceedance
5.00	<5% of the total number of blasts in a 12 month period are to be below 5mm/s
10.00	NIL

## 4.2 Air Quality Monitoring Results

Fall out dust deposition bottles are currently used to monitor air quality. The bottles are position in the field for a period of  $30 \pm 2$  days. Monitoring is undertaken every second month. The bottles are then sent to Australian Laboratory Services (ALS) for external analysis.

PGM has no set limits for air quality monitoring levels. However, takes on board the EPAs best practice limit of  $4\text{g}/\text{m}^2/\text{time}$  (limit is applicable to 12 month averaging period). If a single monitoring result is over the EPAs best practice limit of  $4\text{g}/\text{m}^2/\text{time}$ , the cause is investigated and reported in the AEMR.

No dust monitoring was conducted during May.

The New Gold Internet link on the cover page contains the full dataset for EPL licenced monitoring locations.

### 4.3 Attended Noise Monitoring Results

A hand held monitor is used by PGM employees to monitor noise levels at times set out by the EPL and development consent conditions. Noise monitoring is conducted at the closest resident and sporadically depending on operational requirements. PGMs closest monitoring point is located at the Dellavale boundary, approximately 400m closer to the mine noise than the residence. To determine the noise level (dB) experienced at the residence, sound intensity *I* and the inverse square law  $1/r^2$  is calculated based on the residences distance from mine noise.

Noise monitoring results and licenced noise limits set by the EPL and Development Consent Conditions are given in Table 4.3a and Table 4.3b respectively.

The New Gold Internet link on the cover page contains the full dataset for EPL licenced monitoring locations.

**Table 4.3a Attended Noise Monitoring Results**

Location	Date		Time	LA 10 (dB) Limit	LA 10 (dB) Monitoring Result at Monitor Location	LA 10 (dB) Calculated Monitoring Result at Residence	Key Noise Source	Complies
	Sampled & Obtained	Published						
Dellavale	26/05/15	27/05/15	14:30	45	45.4	40.88	Non-mine cars and trucks on HWY, non-mine car.	Yes

**Table 4.3b Attended Noise Monitoring Limits**

Time Band	Day	Noise Level (dB)
8:00am – 6:00pm	Mon – Fri	45
6:00pm – 10:00pm	Mon – Fri	40
10:00pm – 8:00am	Mon – Fri	35
8:00am – 1:00pm	Sat	45
1:00pm – 8:00am	Sat	35
12:00am – 12:00pm	Sun	35

## 4.4 Water Monitoring Results

Surface water monitoring involves collecting water samples from a number of locations around site and submitted to external laboratory for physical and chemical analysis, pH and electrical conductivity are obtained using a handheld monitor. Table 4.4 gives the results in as per the PGM EPL requirements.

The New Gold Internet link on the cover page contains the full dataset for EPL licenced monitoring locations.

**Table 4.4 Surface Water Monitoring Results**

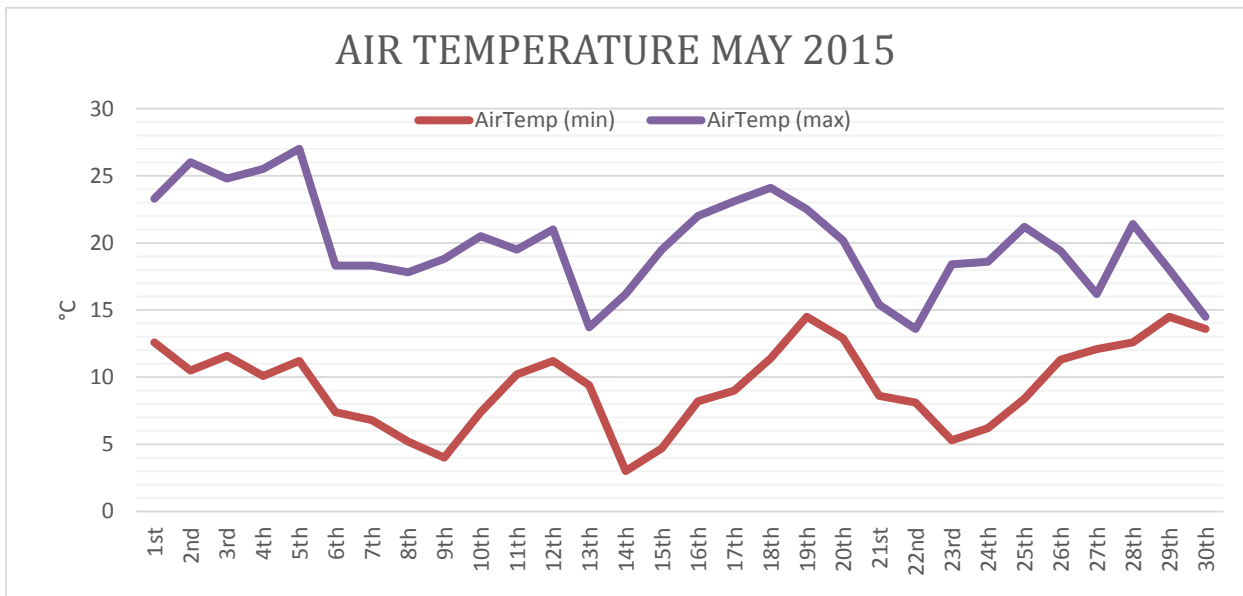
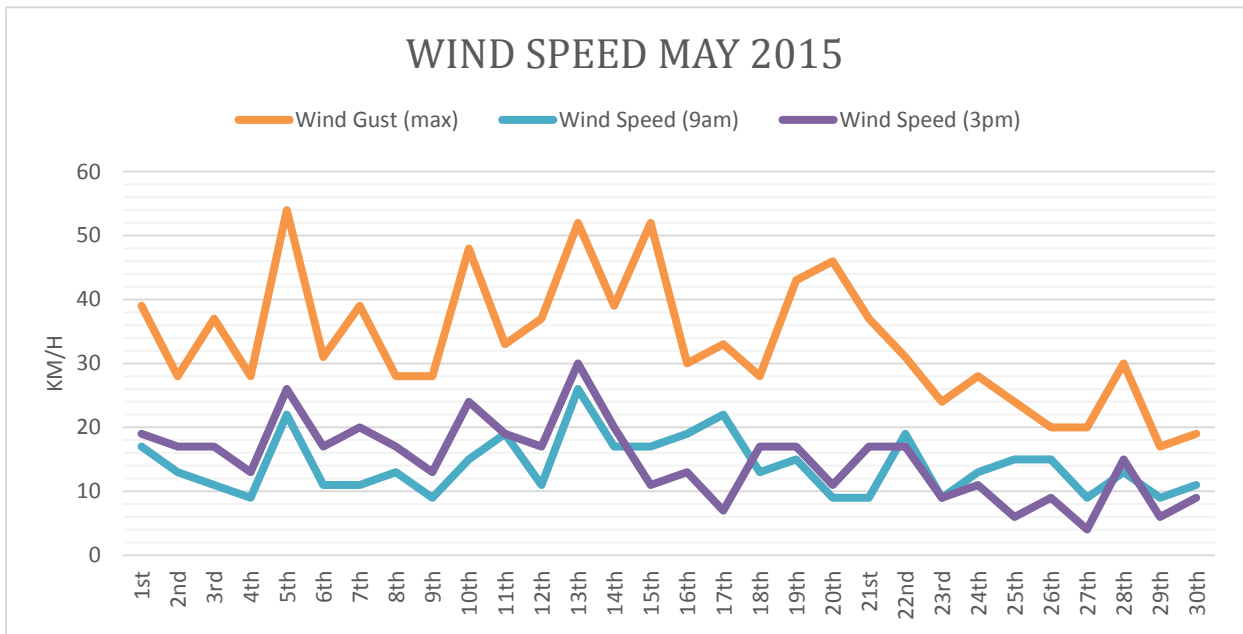
Monitoring Point	Date			Limit	CN WAD	CN Free	Complies
	Sampled	Received	Published		mg/L	mg/L	
Tailings Feed	12/05/2015	2/06/2015	2/06/2015	No Limit	574	288	Yes
Tailings Feed	19/05/2015	2/06/2015	2/06/2015	No Limit	321	156	Yes
Recycled Water Dam Feed	26/05/2015	11/06/2015	11/06/2015	No Limit	<0.004	<0.004	Yes

## 4.5 Weather Data Results

PGM meteorology monitoring data has been acquired through the Bureau of Meteorology (BOM) weather station located 2km North West of Cobar.

PGMs onsite weather station is currently undergoing a system upgrade.

The BOM can be used as an alternate source for this monitoring data.





May 2015 Monthly Environmental Summary

