

# Drivers Code of Conduct

for the

# Dargues Gold Mine

**Big Island Mining Ltd**

ABN: 12 112 787 470

920 Majors Creek Road,  
Majors Creek, NSW, 2622

Telephone: 1800 732 002

Email: [dgm.community@aureliametals.com.au](mailto:dgm.community@aureliametals.com.au)

**This Copyright is included for the protection of this document**

## COPYRIGHT

© **Big Island Mining Limited 2021**

All intellectual property and copyright reserved.

Apart from any fair dealing for the purpose of private study, research, criticism or review, as permitted under the Copyright Act, 1968, no part of this report may be reproduced, transmitted, stored in a retrieval system or adapted in any form or by any means (electronic, mechanical, photocopying, recording or otherwise) without written permission. Enquiries should be addressed to Aurelia Metals Ltd.

<b>Document Title</b>	<b>Drivers Code of Conduct</b>				
<b>Document Number</b>	Appendix A – Traffic Management Plan				
<b>Document Owner</b>	Dargues Gold Mine Sustainability Department				
<b>Revision</b>	<b>Company</b>	<b>Date</b>	<b>Originator</b>	<b>Reviewed</b>	<b>Approved</b>
Original	Cortona	14/12/2012	Graham Blowes Greg Cozens	James Dornan	AJ Saverimutto
Revision 1	Unity	16/12/2013		James Dornan	Scott Jones
Revision 2	Diversified Minerals	07/11/2016		James Dornan	DPE
Revision 3	Big Island Mining	14/05/2021		Samantha Lloyd	Chase Dingle

## CONTENTS

	<b>Page</b>
1. INTRODUCTION.....	1
2. LEGAL AND OTHER REQUIREMENTS .....	1
3. DRIVER'S CODE OF CONDUCT .....	2
4. MONITORING AND COMPLIANCE.....	3
5. INCIDENT INVESTIGATION .....	3
6. ROLES AND RESPONSIBILITY .....	4
7. REVIEW .....	4
APPENDICES .....	5

**FIGURES**

Figure 1 Approved Road Transportation Routes..... 7

**TABLES**

Table 1 Driver Code of Conduct Conditions – MP10\_0054 ..... 1  
Table 2 Roles and Responsibility ..... 4

**APPENDICES**

Appendix A – Driver’s Code of Conduct (Brief Version)..... 6  
Appendix B - Driver’s Code of Conduct Questionnaire ..... 8  
Appendix C – Driver’s Code of Conduct Sign Off Sheet ..... 8

## 1. INTRODUCTION

This Driver's Code of Conduct provides guidance to drivers operating heavy vehicles on public roads on behalf of Big Island Mining Pty Ltd (BIM) and describes the following:

- The legal and other requirements associated with management of traffic-related issues;
- traffic management measures that would be implemented during the life of the Project;
- incident Investigation;
- roles and responsibility;
- competence training and awareness; and
- document review.

This code of conduct applies to all employees, contractors and consultants of BIM operating heavy vehicles on public roads and has been implemented in satisfaction of Commitment 10.8 of Modified Project Approval (MP10\_0054 MOD4).

## 2. LEGAL AND OTHER REQUIREMENTS

The Dargues Gold Mine (the Project) received project approval on 8 February 2012 pursuant to the *Environmental Planning and Assessment Act 1979* (EP&A Act). Relevant conditions associated with MP10\_0054 MOD4 are reproduced in **Table 1**.

**Table 1 Driver Code of Conduct Conditions – MP10\_0054**

3(41)	<p><b>Operating Conditions</b> The Proponent shall ensure that:</p>
	(a) a maximum of 4 concentrate trucks exit the site per hour;
	(b) the dispatch of concentrate from the site is limited to between the hours of 7am to 10pm Monday to Saturday and 8am-10pm Sundays and Public Holidays;
	(c) all heavy vehicle movements to or from the site are prohibited between the hours of 7am - 8.30am and 3pm - 5pm on school days;
	(d) a bus is operated from Braidwood to offer mine workers transport to and from the site each day; and
	(e) all reasonable and feasible measures are implemented to minimise the project's contribution to the traffic on Majors Creek Road, Araluen Flat Road, Captains Flat Road, Coghill Street and Wallace Street.
3(42)	<p><b>Transport Route</b> Once the site access road and its intersection with Majors Creek Road are complete, the Proponent shall ensure that, except in emergency situations, no project-related heavy vehicles access the site from the south or via Monga Lane.</p>

### 3. DRIVER'S CODE OF CONDUCT

The Driver's Code of Conduct requires drivers to comply with the following:

- Transport for NSW, formerly Road and Maritime Services(RMS)
  - All drivers must be appropriately licensed for the vehicle they are operating.
  - Comply with all Transport for NSW regulations regarding speed, load limits and driving hours.
- Project Requirements
  - Maintain safe and courteous driving practices at all times, which are appropriate to the conditions.
  - Comply with Project speed limits, signage and communications protocols.
  - Strictly access the Project Site only via the Main Site Entrance on Majors Creek Road. Except in emergency situations whereby project-related heavy vehicles may access the site from the south (Wallace's Gap Rd) or via Monga Lane.
- Speed Limit Restrictions
  - Limit heavy vehicle speeds on Majors Creek Road to 80km/hr. Comply with maximum vehicle speeds within the Project Site, namely 20km/hr in operational sections of the Project Site and 40km/hr in all other areas. Unless sign posted otherwise.
- Driving Practices
  - During fog conditions turn on headlights/fog lights and adopt vehicle speeds appropriate to the conditions.
  - Secure and cover loads as appropriate. In particular, concentrate loads are to be covered in a manner that no concentrate may be blown from the truck under normal operating conditions.
  - Limit the use of the engine brake and other noisy driving practices in built-up areas and near houses on the Majors Creek Road.
- Comply with the following time of day constraints
  - Drivers of heavy vehicles carrying concentrate are to leave the Project Site only between the hours of 7:00am and 10:00pm Monday to Saturday and 8:00am to 10:00pm Sunday and Public Holidays.
  - Drivers of all heavy vehicles are prohibited from travelling on the section of road between Braidwood and the Project Site between the hours of 7:00am and 8:30am and 3:00pm and 5:00pm on school days.
- Have a copy of Appendix A available at all times when operating for BIM.

## 4. MONITORING AND COMPLIANCE

The Company will maintain a register of persons having read and agreed (by signature) to the Driver's Code of Conduct. The following procedure will be implemented to enforce the Driver's Code of Conduct.

- A copy of the Driver's Code of Conduct will be made available on the Project website (<https://aureliametals.com>).
- A procedure for members of the public to report alleged unsafe driving or breaches of the Driver's Code of Conduct will be provided on the Project website (<https://aureliametals.com>) alongside the Driver's Code of Conduct.
- In the event that a complaint is received, an investigation will be initiated. If the investigation confirms the alleged activity and identifies that the driver and vehicle in question are Project-related, then appropriate action will be taken depending on the circumstances. Appropriate actions may include:
  - Counselling of the driver in relation to the requirements of the Driver's Code of Conduct;
  - Issuing of a formal warning to the driver;
  - Exclusion of the driver from the Project Site; and/or
  - Exclusion of the transport contractor from the Project Site.

## 5. INCIDENT INVESTIGATION

In the event of a traffic accident, incident, reported near miss or complaint in relation to a breach of the Driver's Code of Conduct, the Company will initiate an investigation. The investigation will seek to determine:

- What occurred at the time of the incident;
- The root cause of the incident;
- Any contributing factors which led to the incident; and
- Whether appropriate controls were implemented to prevent the incident.

Corrective and/or preventative actions will be assigned to relevant personnel as a result of the investigation. Actions will be communicated through planning meetings and toolbox talks. If required, this Driver's Code of Conduct will be amended and all signatories to the Driver's Code of Conduct will be required to review the Code. Outstanding actions will be monitored for their effectiveness upon completion.

All reports associated with complaints or incidents will be retained for a period of no less than four years.

## 6. ROLES AND RESPONSIBILITY

**Table 2 Roles and Responsibility**

<b>ROLES</b>	<b>RESPONSIBILITY</b>
General Manager	Must ensure adequate resources are available to enable implementation of the Code.
Sustainability Manager	Ensure the implementation of this Code. Ensure employees are competent through training and awareness programs.
All Signatories	Abide by the Code of Conduct when operating on behalf of BIM

## 7. REVIEW

In accordance with Condition 5(4) of MP10\_0054, this code will be reviewed and, if required, revised within 3 months of:

- The submission of an annual review under Condition 5(3);
- The submission of an incident report under Condition 5(6);
- The submission of an audit report under Condition 5(8); and
- Any modification to the conditions of MP10\_0054.

This review will include the adequacy of the Code, as required under the Project approval. Recommendation for appropriate measures or action to improve the performance of the Project and or any assessment, plan or program will be incorporated into this Plan.



## **APPENDICES**

Appendix A – Driver’s Code of Conduct (Brief Version)

Appendix B – Driver’s Code of Conduct Questionnaire

Appendix C – Driver’s Code of Conduct Sign Off Sheet

## Appendix A – Driver’s Code of Conduct (Brief Version)

The Driver’s Code of Conduct requires drivers to comply with the following:

- Transport for NSW, formerly Roads and Maritime Services (RMS)
  - All drivers must be appropriately licensed for the vehicle they are operating.
  - Comply with all Transport for NSW regulations regarding speed, load limits and driving hours.
- Project Requirements
  - Maintain safe and courteous driving practices at all times, which are appropriate to the conditions.
  - Comply with Project speed limits, signage and communications protocols.
  - Strictly access the Project Site only via the Main Site Entrance on Majors Creek Road. In emergency situations, project-related heavy vehicles may access the site from the south (Wallace’s Gap Rd) or via Monga Lane during operations.
- Speed Limit Restrictions
  - Limit heavy vehicle speeds on Majors Creek Road to 80km/hr.
  - Comply with maximum vehicle speeds within the Project Site, namely 20km/hr in operational sections of the Project Site and 40km/hr in all other areas. Unless sign posted otherwise.
- Driving Practices
  - During fog conditions turn on headlights/fog lights and adopt vehicle speeds appropriate to the conditions.
  - Secure and cover loads as appropriate. In particular, concentrate loads are to be covered in a manner that no concentrate may be blown from the truck under normal operating conditions.
  - Limit the use of the engine brake and other noisy driving practices in built-up areas and near houses on the Majors Creek Road.
- Comply with the following time of day constraints.
  - Drivers of heavy vehicles carrying concentrate are to leave the Project Site only between the hours of 8.30am and 10:00pm Monday to Saturday and 8:00am to 10:00pm Sunday and Public Holidays.
  - Drivers of all heavy vehicles are prohibited from travelling on the section of road between Braidwood and the Project Site between the hours of 7:00am and 8:30am and 3:00pm and 5:00pm on school days.
- Have a copy of Appendix A available at all times when operating for BIM.

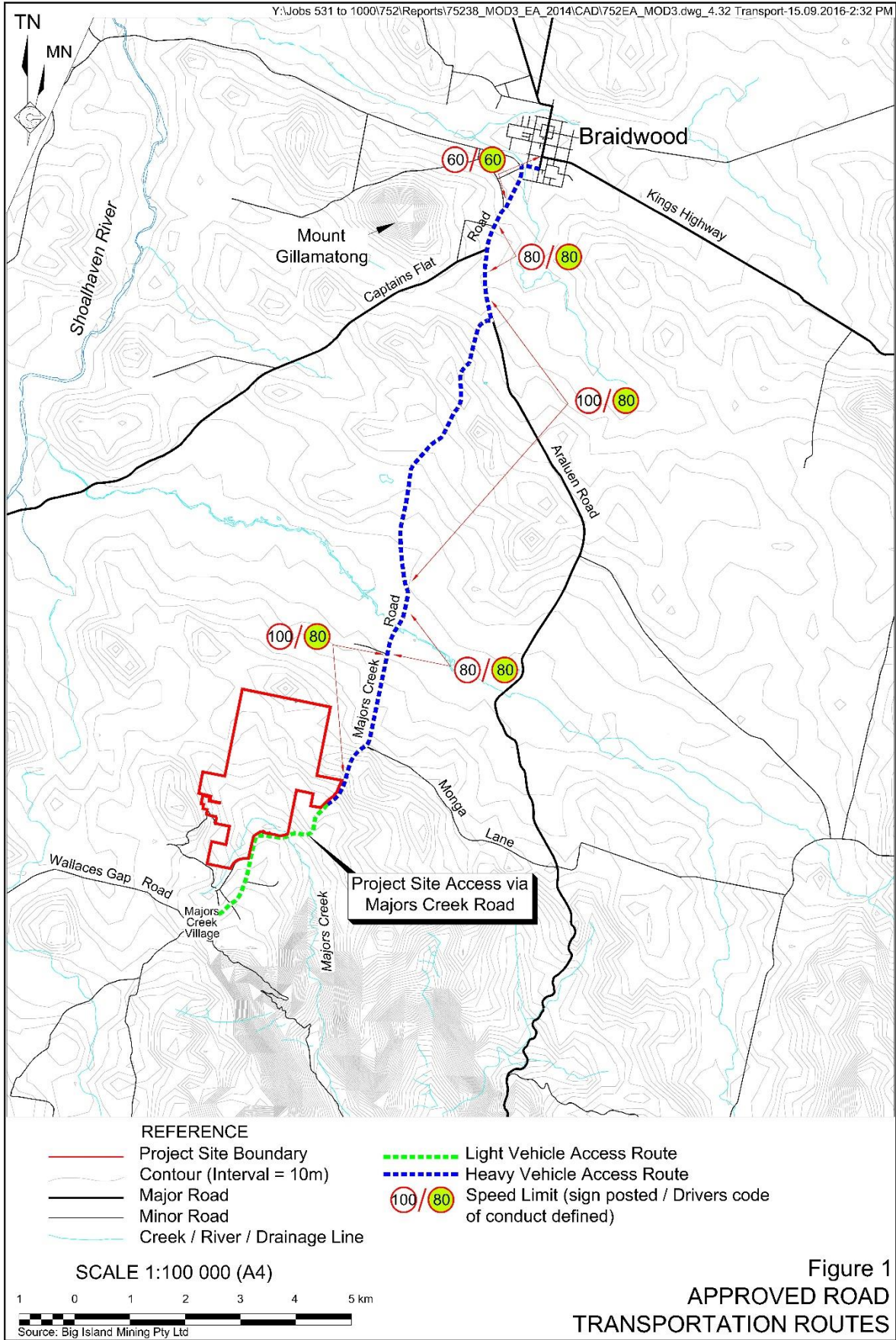


Figure 1 Approved Road Transportation Routes

**Appendix B - Driver's Code of Conduct Questionnaire**

<b>Question 1.</b> I am not permitted to travel between Braidwood and the Project Site between the hours of 7:00am and 8:30am and 3:00pm and 5:00pm on school days.	<b>Please Circle Answer</b>	
	True	False
<b>Question 2.</b> Heavy vehicles are restricted to 90km/h when travelling on Araluen Road and Majors Creek Road.	True	False
<b>Question 3.</b> Heavy vehicles are permitted to access the site from the south (Wallace's Gap Rd) or via Monga Lane at any time.	True	False
<b>Question 4.</b> A copy of the Drivers Code of Conduct can be located on the Aurelia Metals Website ( <a href="https://aureliametals.com">https://aureliametals.com</a> ).	True	False
<b>Question 5.</b> All Drivers must comply with Project speed limits, signage and communications protocols.	True	False
<b>Question 6.</b> In the event that a complaint is received regarding traffic movements from the Project, an investigation will be initiated.	True	False

**Appendix C – Driver's Code of Conduct Sign Off Sheet**

Name: \_\_\_\_\_

Mobile Number: \_\_\_\_\_

Transport Company: \_\_\_\_\_

Company Contact Number: \_\_\_\_\_

I, \_\_\_\_\_, have been provided with a copy of the Driver's Code of Conduct for the Dargues Gold Mine. I have read and understood this Code of Conduct and agree to abide by the conditions contained within it when operating on behalf of Big Island Mining Pty Ltd.

Signed: \_\_\_\_\_