

Licensee	Hera Resources Pty Ltd
Address	'The Peak', Burthong Road, Nymagee, NSW 2831
Environmental Protection Licence	20179
Link to Licence	http://www.epa.nsw.gov.au/prpoeoapp/ViewPOEOLicence.aspx?DOCID=32372&SYSUID=1&LICID=20179
Project Approval	10_0191
Reporting Period	October 2016
Date Published	6 January 2017

Weather Monitoring

Hera Resources Pty Ltd (the Company), a wholly owned subsidiary of Aurelia Metals Limited, owns and operates the Hera Mine. The Company has one licenced weather station (licence point 23) associated with the mine (Figure 1). A summary of the licence conditions (Environmental Protection Licence (EPL) 20179) associated with this point is presented in Table 1.

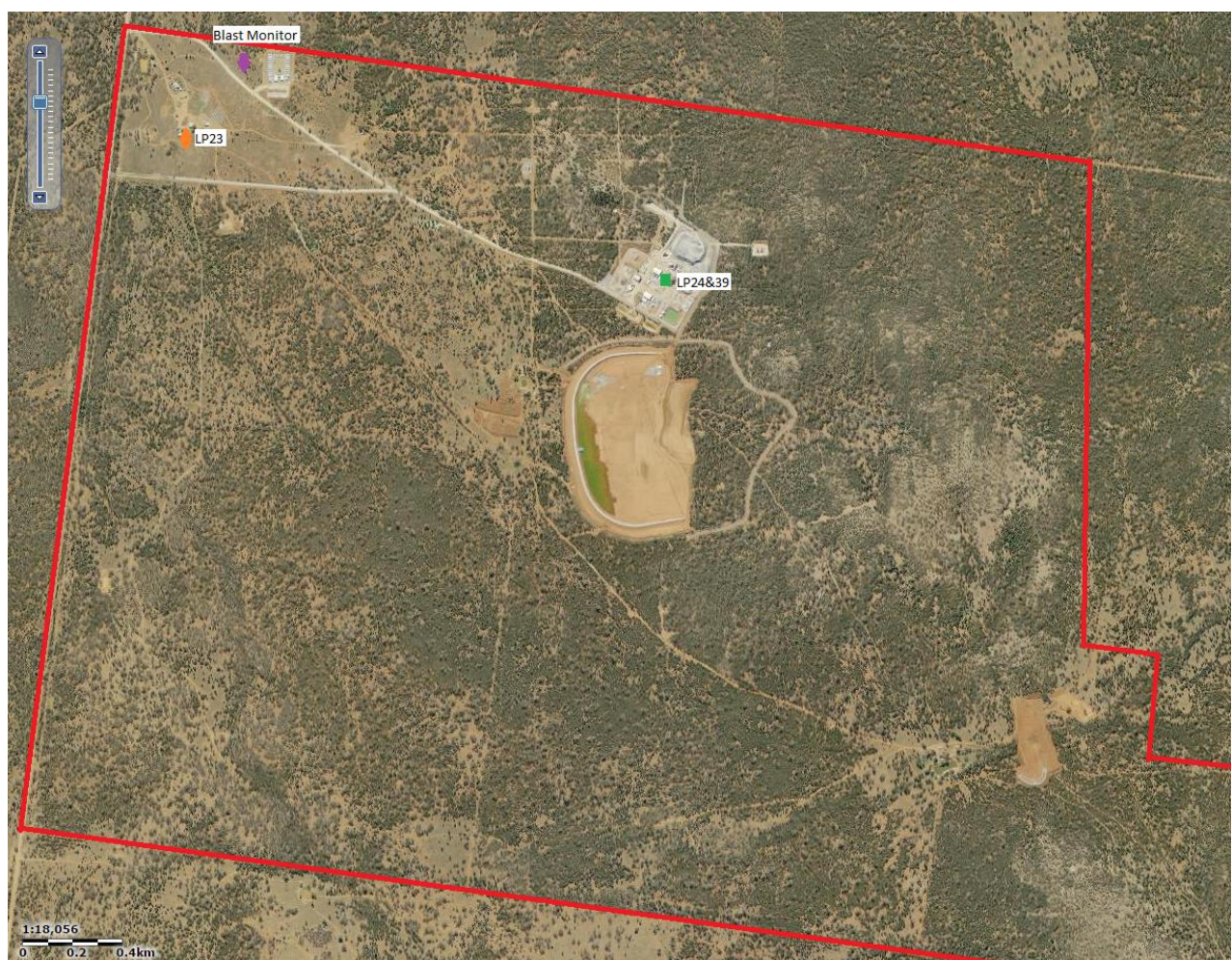


Figure 1. Location of the licence points associated with Gold Room Stack monitoring (Licence Point 24), Blast monitoring and meteorological monitoring (Licence Point 23).

Table 1. Summary of EPL 20179 conditions associated with the licensed weather station.

Parameter	Frequency
Air Temperature (°C)	Continuous
Wind Direction (°)	Continuous
Wind Speed (m/s)	Continuous
Sigma Theta (°)	Continuous
Rainfall (mm)	Continuous
Relative Humidity (%)	Continuous

Meteorological monitoring is conducted on a continuous basis. Table 2 is a summary of the data collected by the weather station in October 2016. Figure 2 is a wind rose for the month.

Table 2. Summary of meteorological data for October 2016.

Pollutant	No. of measurements for month	Min. value	Mean value	Median value	Max. value
Air Temperature (°C)	Continuous	0.08	15.53	15.67	30.41
Wind Speed (m/s)	Continuous	0.00	2.59	2.54	8.93
Sigma Theta (°)	Continuous	0.00	21.15	17.96	101.52
Rainfall (mm)	Continuous	0.00	0.01	0.00	2.00
Relative Humidity (%)	Continuous	24.63	65.98	62.78	99.46

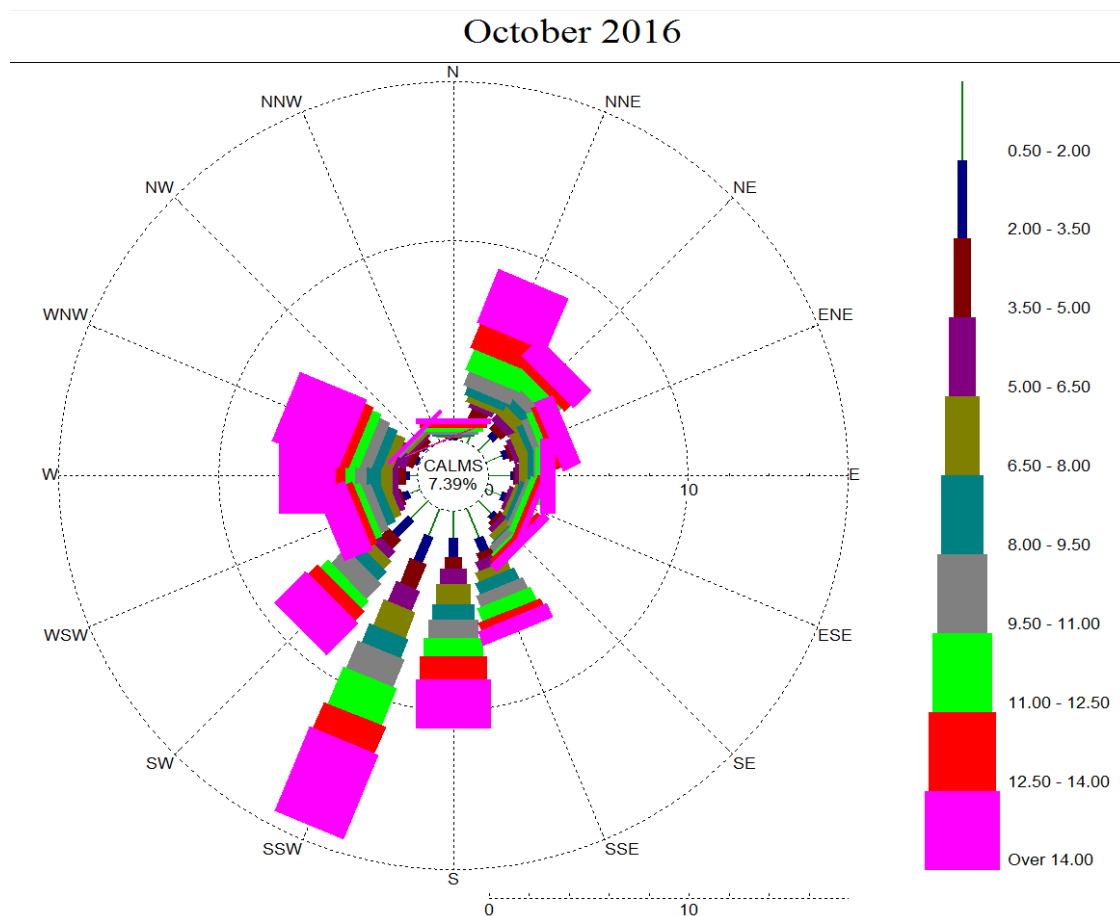


Figure 2. Wind rose October 2016.

Surface Water Monitoring

The Company has six licence points associated with surface waters. Four of these points are located within the Mining Lease (Figure 3) and two are located on Box creek, upstream and downstream of the mining lease (Figure 4). A summary of the licence conditions associated with these licence points is presented in Table 3.

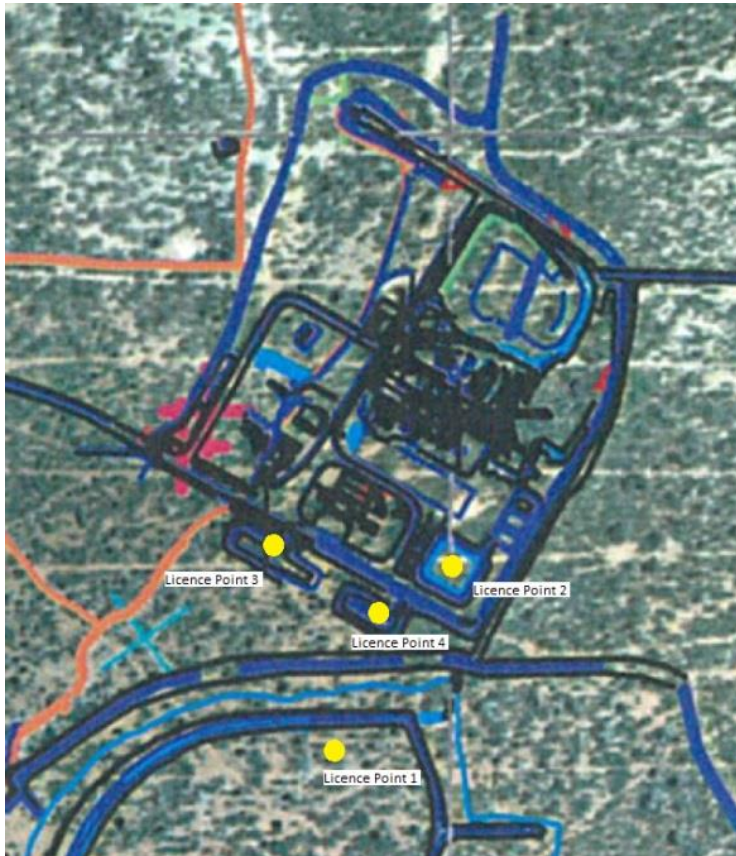


Figure 3. Licensed surface water monitoring points located onsite.

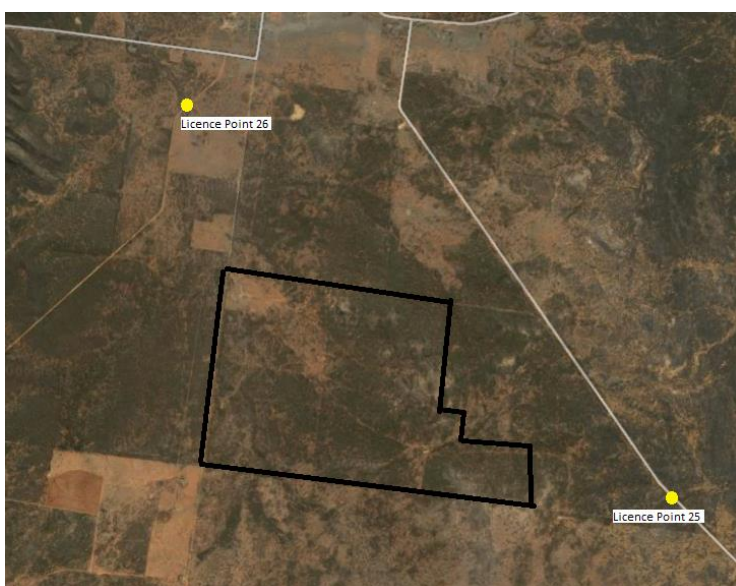


Figure 4. Licensed surface water monitoring points located offsite. The black outline represents the Project Area.

Table 3. Summary of EPL 20179 conditions associated with licensed surface water monitoring points.

EPA ID No.	Monitoring Frequency	Limit
1, 2	Daily during discharge	
3, 4, 25, 26	During discharge	
	Pollutant	
1	Cyanide (weak acid dissociable (WAD))	10 mg/L
2	Cyanide (WAD)	20 mg/L (90 percentile limit)
		30 mg/L (max. limit)
3, 4, 25, 26 (Please note: Limits apply only to Licence Points 3 and 4.)	Aluminium	0.055 mg/L
	Arsenic	0.024 mg/L
	Boron	0.370 mg/L
	Cadmium	0.0002 mg/L
	Copper	0.0014 mg/L
	Cyanide (WAD)	0.007 mg/L
	Electrical Conductivity	1000 (µS/cm)
	Lead	0.0034 mg/L
	Manganese	1.90 mg/L
	Nickel	0.011 mg/L
	Nitrogen (total)	0.5 mg/L
	Oil and Grease	10 mg/L
	pH	6.5-8.5
	Phosphorus (total)	0.025 mg/L
	Silver	0.00005 mg/L
Total suspended solids	50 mg/L	
Zinc	0.008 mg/L	

Table 4 a summary of the surface water quality results. The table has also been colour coordinated by the licence limit that applies to each licence point. Licence Point 3, 4, 25 and 26 did not discharge for the month.

Table 4. Summary of surface water quality results for October 2016.

	Analytes (mg/L)																			
	WAD Cyanide				Al	As	B	Cd	Cu	EC ($\mu\text{S}/\text{cm}$)	Pb	Mn	Ni	N	Oil & Grease	pH	Ag	P	TSS	Zn
	Min.	Mean	Median	Max.																
Licence Limits	10				0.055	0.024	0.37	0.0002	0.0014	1000	0.0034	1.9	0.011	0.5	10	6.5-8.5	0.00005	0.025	50	0.008
	20 (90 Percentile)																			
	30 (max.)																			
	0.007																			
Licence Points																				
1	0	0	0	0																
2	0	0	0	0																
3	No flow																			
4	No flow																			
25	No flow																			
26	No flow																			

Groundwater Monitoring

The Company has 17 licence points associated with groundwater. These points are located around the Project Area (Figure 5) and are a combination of observation bores, productions bores (red points) and piezometers (purple points). A summary of the licence conditions associated with these licence points is presented in Table 5.

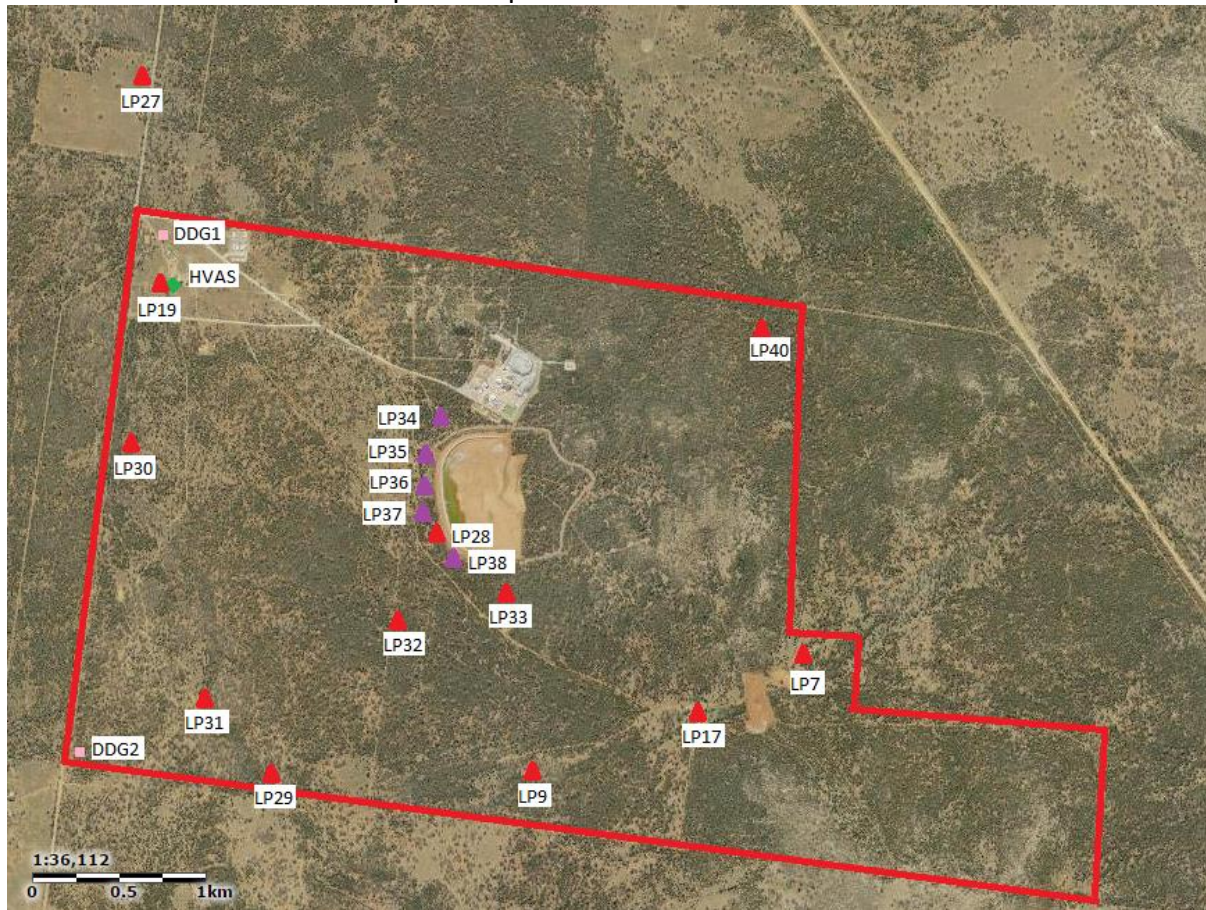


Figure 5. Licensed groundwater and air quality monitoring points.

Table 5. Summary of EPL 20179 conditions associated with licensed groundwater monitoring points.

EPA ID No.	Monitoring Frequency
	Quarterly
	Pollutant
7, 9, 17, 19, 27, 28, 29, 30, 31, 32, 33, 40	Antimony (mg/L)
	Arsenic (mg/L)
	Bicarbonate (mg/L)
	Boron (mg/L)
	Cadmium (mg/L)
	Calcium (mg/L)
	Carbonate (mg/L)
	Chloride (mg/L)
	Chromium (mg/L)
	Copper (mg/L)
	Cyanide (free) (mg/L)
	Cyanide (total) (mg/L)
	Cyanide (WAD) (mg/L)
	Electrical Conductivity (μ S/cm)
	Iron (mg/L)
	Lead (mg/L)
	Magnesium (mg/L)
	Mercury (mg/L)
	Molybdenum (mg/L)
	Nickel (mg/L)
	pH
	Potassium (mg/L)
	Silver (mg/L)
	Sodium (mg/L)
	Tin (mg/L)
	Total dissolved solids (mg/L)
	Zinc (mg/L)
7, 27, 28, 29, 30, 34, 35, 36, 37, 38, 40	Standing Water Level (m)
EPA ID No.	Monitoring Frequency
	When water present
	Pollutant
34, 35, 36, 37, 38	Cyanide (free) (mg/L)
	Cyanide (total) (mg/L)
	Cyanide (WAD) (mg/L)
	Electrical Conductivity (μ S/cm)
	pH

Quarterly groundwater results for October are summarised in Table 6.

Table 6: Summary of October 2016 groundwater quality results.

Licence Point	Analyte (mg/L)													EC (mS/cm)	
	Sb	As	HCO3-	B	Cd	Ca	CO3-2	Cl	Cr	Cu	CN- (Free)	CN- (Total)	CN- (WAD)		
7	<0.001	<0.001	694	0.46	<0.0001	199	<1	1010	0.001	<0.001	<0.004	<0.004	<0.004	4130	
9	<0.001	<0.001	638	0.72	<0.0001	200	<1	970	<0.001	<0.001	<0.004	<0.004	<0.004	4970	
17	<0.001	0.001	374	0.36	<0.0001	45	<1	221	<0.001	0.002	<0.004	<0.004	<0.004	1293	
19	<0.001	<0.001	2	<0.05	<0.0001	<1	<1	<1	<0.001	0.006	<0.004	<0.004	<0.004	38.4	
27	<0.001	<0.001	534	1.39	<0.0001	73	<1	1160	<0.001	<0.001	<0.004	<0.004	<0.004	5610	
28	0.001	<0.001	730	0.74	<0.0001	205	<1	937	<0.001	0.001	<0.004	<0.004	<0.004	5320	
29	0.017	<0.001	359	0.48	<0.0001	47	<1	332	<0.001	<0.001	<0.004	<0.004	<0.004	2062	
30	0.001	0.001	999	2.16	<0.0001	79	38	1540	<0.001	<0.001	<0.004	<0.004	<0.004	6850	
31	<0.001	0.019	421	0.88	<0.0001	108	<1	1240	<0.001	<0.001	<0.004	<0.004	<0.004	5170	
32	<0.001	<0.001	667	0.98	<0.0001	252	<1	827	<0.001	<0.001	<0.004	<0.004	<0.004	6720	
33	<0.001	0.009	553	0.41	<0.0001	177	<1	619	<0.001	0.001	<0.004	<0.004	<0.004	3390	
34											DRY	DRY	DRY	DRY	
35											DRY	DRY	DRY	DRY	
36											DRY	DRY	DRY	DRY	
37											DRY	DRY	DRY	DRY	
38											DRY	DRY	DRY	DRY	
40	<0.001	<0.001	670	0.54	<0.0001	192	<1	1010	<0.001	<0.001	<0.004	<0.004	<0.004	5270	
	Analyte (mg/L)													SWL (m)	
	Fe	Pb	Mg	Hg	Mo	Ni	pH	K	Ag	Na	Sn	TDS	Zn		
7	0.1	0.002	165	<0.0001	<0.001	0.001	6.92	16	<0.001	567	<0.001	2850	0.007	52.96	
9	0.9	0.002	242	<0.0001	<0.001	0.023	7.04	28	<0.001	691	<0.001	3620	0.014		
17	<0.05	0.004	44	<0.0001	<0.001	0.001	6.83	9	<0.001	176	<0.001	786	0.022		
19	<0.05	<0.001	<1	<0.0001	<0.001	0.002	6.59	<1	<0.001	<1	<0.001	<10	0.293		
27	1.39	0.001	139	<0.0001	0.002	<0.001	7.32	34	<0.001	937	<0.001	2780	0.02	54.11	
28	1.58	<0.001	226	<0.0001	<0.001	0.002	6.98	27	<0.001	647	<0.001	2980	0.033	81.1	
29	<0.05	0.003	57	<0.0001	0.001	0.002	7.19	14	<0.001	310	<0.001	1300	0.026	62.11	
30	0.18	0.001	100	<0.0001	<0.001	0.001	7.36	32	<0.001	1380	<0.001	4390	0.026	59.87	
31	16	<0.001	142	<0.0001	<0.001	<0.001	7.39	31	<0.001	913	<0.001	3460	0.008		
32	0.12	<0.001	255	<0.0001	<0.001	0.037	6.93	32	<0.001	932	<0.001	4550	0.041		
33	3.16	0.003	173	<0.0001	<0.001	0.002	6.65	20	<0.001	459	<0.001	2530	0.023		
34											DRY				
35											DRY				
36											DRY				
37											DRY				
38											DRY				
40	<0.05	0.002	186	<0.0001	<0.001	0.001	7.23	16	<0.001	627	<0.001	2740	0.02	53.72	

Noise Monitoring

The Company has four licenced monitoring points (R1, R2, R3 and R4) located along the Burthong Road (Figure 6). The locations are strategically placed near the Hera Mine's nearest neighbours. R1 and R2 are measured from the same point as both neighbours are located in very close proximity to each other. A summary of the EPL and Project Approval (PA) conditions associated with these licenced points is presented in Table 7.

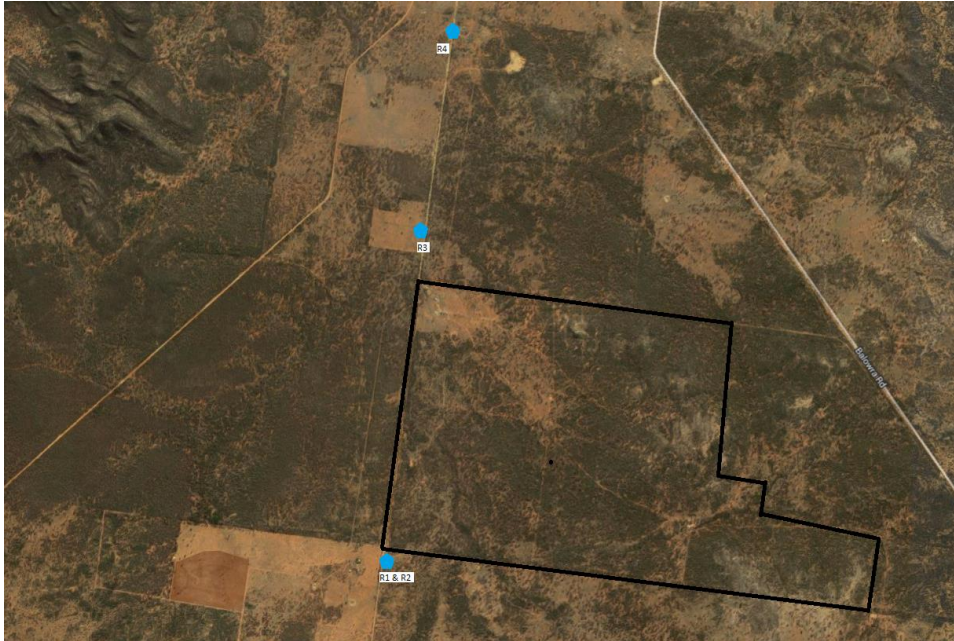


Figure 6. Licenced noise monitoring locations. The black outline represents the approximate project area.

Table 7. Summary of EPL 20179 conditions associated with noise monitoring.

Location	Pollutant - Noise	Limits
R1, R2, R3, R4	Monday to Friday - 0700 hours (hrs) to 1800 hrs	LAeq (15 minute) 35 decibels (dB)
	Monday to Friday - 1800 hrs to 2200 hrs	LAeq (15 minute) 35 dB
	All other times	LAeq (15 minute) 35 dB
		LA1 (1 minute) 45 dB

Table 8 is a summary of the noise results for the month. No exceedances were recorded for the month. Results recorded in which wind speeds were greater than 3 m/s have been greyed out as they are n/a.

Table 8. Summary of noise monitoring results for October 2016.

Date	Time	Site	Period of day	Wind speed (m/s)	LA1 (dB)	LAeq (dB)	Mine Audible?	Noise heard
29/10/2016	6:14	R1/R2	Night	2.20	48.7	26.08	Yes	Birds, vent fan, mine heavy vehicles
29/10/2016	5:51	R3	Night	1.97	51.9	29.06	Yes	Birds, horse, vent fan
29/10/2016	5:30	R4	Night	0.65	44.4	16.50	Yes	Birds, frogs, low hum vent fan
29/10/2016	17:31	R1/R2	Day	3.01		26.81	No	Birds, insects, wind
29/10/2016	13:55	R3	Day	4.07		28.29	No	Insects, birds, wind
29/10/2016	14:59	R4	Day	4.62		29.17	No	Birds, insects, wind, car in distance
28/10/2016	20:46	R1/R2	Evening	1.58		24.47	No	Insects, wind
28/10/2016	20:23	R3	Evening	2.27		32.13	Yes	Insects, wind, vent fan, heavy vehicles (mine), aeroplane
28/10/2016	20:02	R4	Evening	2.91		23.16	Yes	Insects, frogs, birds, faint hum from vent fan

Blast Monitoring

The blast monitor is located to the east of the personnel accommodation (Figure 1). Blast site laws are used to predict the blast vibration at the nearest neighbour. A summary of the EPL and PA conditions associated with this licenced point are presented in Table 9.

Table 9. Summary of EPL 20179 and PA 10_0191 conditions associated with blast monitoring.

Location	Pollutant	Time Period	Limits
Blast monitoring	Ground vibration <i>(monitor for every blast)</i>	All times	10 mm/s (max.)
		Day	5 mm/s (95% of total blasts)
		Evening	2 mm/s (95% of total blasts)
		Night and all day on Sundays and Public Holidays	1 mm/s (max.)
	Airblast overpressure	All times	120 dB (max.)
	<i>(monitor for every blast)</i>	All times	115 dB (95% of total blasts)

The Company conducted a total of 84 blasts in October 2016. The characteristics of each blast are presented in Table 10. No exceedances were recorded for the month.

Table 10. Summary of blast monitoring results for October 2016.

Date	Time	Time period	Vibration (mm/s)	Overpressure (dB)
Saturday, 1 October 2016	7:00	Day	<0.35	
Saturday, 1 October 2016	7:00	Day	<0.35	
Sunday, 2 October 2016	22:35	Sunday	<0.35	
Monday, 3 October 2016	6:45	Night	<0.35	
Monday, 3 October 2016	6:45	Night	<0.35	
Monday, 3 October 2016	20:45	Evening	<0.35	
Tuesday, 4 October 2016	6:30	Night	<0.35	
Wednesday, 5 October 2016	1:00	Night	<0.35	
Wednesday, 5 October 2016	1:00	Night	<0.35	
Wednesday, 5 October 2016	13:40	Day	0.653	<88
Wednesday, 5 October 2016	14:00	Day	<0.35	
Thursday, 6 October 2016	6:45	Night	<0.35	
Thursday, 6 October 2016	6:45	Night	<0.35	
Thursday, 6 October 2016	19:40	Evening	1.035	<88
Friday, 7 October 2016	6:45	Night	<0.35	
Saturday, 8 October 2016	6:50	Night	<0.35	
Saturday, 8 October 2016	6:50	Night	<0.35	
Sunday, 9 October 2016	6:55	Sunday	<0.35	
Sunday, 9 October 2016	6:55	Sunday	<0.35	
Monday, 10 October 2016	6:50	Night	0.586	<88
Monday, 10 October 2016	6:50	Night	0.586	<88
Tuesday, 11 October 2016	6:50	Night	<0.35	
Tuesday, 11 October 2016	6:50	Night	<0.35	
Wednesday, 12 October 2016	6:30	Night	<0.35	
Wednesday, 12 October 2016	6:30	Night	<0.35	
Thursday, 13 October 2016	6:35	Night	<0.35	
Thursday, 13 October 2016	6:35	Night	<0.35	
Thursday, 13 October 2016	18:45	Evening	<0.35	
Friday, 14 October 2016	6:45	Night	<0.35	
Friday, 14 October 2016	6:45	Night	<0.35	
Saturday, 15 October 2016	6:45	Night	<0.35	
Saturday, 15 October 2016	6:45	Night	<0.35	
Saturday, 15 October 2016	13:45	Day	0.481	<88
Saturday, 15 October 2016	18:45	Evening	0.649	<88
Sunday, 16 October 2016	6:45	Sunday	<0.35	
Sunday, 16 October 2016	6:45	Sunday	<0.35	
Sunday, 16 October 2016	6:45	Sunday	<0.35	
Sunday, 16 October 2016	18:31	Sunday	0.677	<88
Monday, 17 October 2016	6:30	Night	<0.35	
Monday, 17 October 2016	6:30	Night	<0.35	
Monday, 17 October 2016	6:30	Night	<0.35	
Tuesday, 18 October 2016	6:20	Night	<0.35	
Tuesday, 18 October 2016	6:20	Night	<0.35	
Wednesday, 19 October 2016	6:50	Night	<0.35	

Wednesday, 19 October 2016	6:50	Night	<0.35	
Wednesday, 19 October 2016	18:35	Evening	<0.35	
Thursday, 20 October 2016	9:00	Day	<0.35	
Thursday, 20 October 2016	9:00	Day	<0.35	
Thursday, 20 October 2016	18:35	Evening	<0.35	
Friday, 21 October 2016	6:30	Night	<0.35	
Friday, 21 October 2016	6:30	Night	<0.35	
Saturday, 22 October 2016	7:30	Day	<0.35	
Saturday, 22 October 2016	7:30	Day	<0.35	
Saturday, 22 October 2016	13:10	Day	<0.35	
Saturday, 22 October 2016	18:40	Evening	<0.35	
Sunday, 23 October 2016	7:00	Sunday	<0.35	
Sunday, 23 October 2016	7:00	Sunday	<0.35	
Sunday, 23 October 2016	11:00	Day	<0.35	
Sunday, 23 October 2016	18:40	Evening	<0.35	
Sunday, 23 October 2016	19:00	Evening	<0.35	
Monday, 24 October 2016	6:30	Night	<0.35	
Monday, 24 October 2016	6:30	Night	<0.35	
Monday, 24 October 2016	13:10	Day	0.804	<88
Tuesday, 25 October 2016	6:45	Night	<0.35	
Tuesday, 25 October 2016	6:45	Night	<0.35	
Tuesday, 25 October 2016	6:45	Night	<0.35	
Tuesday, 25 October 2016	18:50	Evening	1.167	<88
Tuesday, 25 October 2016	18:50	Evening	1.167	<88
Wednesday, 26 October 2016	7:00	Day	<0.35	
Wednesday, 26 October 2016	7:00	Day	<0.35	
Wednesday, 26 October 2016	7:00	Day	<0.35	
Thursday, 27 October 2016	6:45	Night	<0.35	
Thursday, 27 October 2016	6:45	Night	<0.35	
Thursday, 27 October 2016	18:30	Evening	<0.35	
Friday, 28 October 2016	6:45	Night	<0.35	
Saturday, 29 October 2016	6:30	Night	<0.35	
Saturday, 29 October 2016	6:30	Night	<0.35	
Saturday, 29 October 2016	6:30	Night	<0.35	
Sunday, 30 October 2016	6:55	Sunday	<0.35	
Sunday, 30 October 2016	6:55	Sunday	<0.35	
Monday, 31 October 2016	6:35	Night	<0.35	
Monday, 31 October 2016	6:35	Night	<0.35	
Monday, 31 October 2016	18:52	Evening	<0.35	
Monday, 31 October 2016	18:52	Evening	<0.35	

Air Quality Monitoring

The Company has two High Volume Air Samplers (HVAS), either designed to sample Particulate matter less than 10 µm (PM₁₀) or Total Suspended Particulate (TSP) matter and two Dust Deposition Gauges (DDG). Refer to Figure 5 for location of the sampling points. A

summary of the PA conditions associated with these monitoring points is presented in Table 11.

Table 11. Summary of Project Approval conditions associated with dust monitoring.

Pollutant	Averaging Period	Limits
TSP	Annual	90 $\mu\text{g}/\text{m}^3$
PM ₁₀	Annual	30 $\mu\text{g}/\text{m}^3$
PM ₁₀	24 Hour	50 $\mu\text{g}/\text{m}^3$
Deposited Dust	Annual	2 $\text{g}/\text{m}^2/\text{month}$ (Max. increase)
	Annual	4 $\text{g}/\text{m}^2/\text{month}$ (Max. total)

Results for air quality monitoring conducted in October 2016 have been summarised in Table 12. One incident was recorded for the month. The incident involved an elevated PM₁₀ result recorded on the 26 October 2016. The incident was reported to the Environmental Protection Authority (EPA) and the Department of Planning and Environment and a thorough investigation was conducted. The incident was most likely caused by high wind speeds on the day.

Table 12. Summary of air quality monitoring results for October 2016.

Pollutant	Unit	Limit	Averaging Period	Result
TSP	$\mu\text{g}/\text{m}^3$	90	Annual	30.31
PM-10 ($\mu\text{g}/\text{m}^3$)	$\mu\text{g}/\text{m}^3$	30	Annual	14.67
	$\mu\text{g}/\text{m}^3$	50	2/10/2016	11.00
	$\mu\text{g}/\text{m}^3$	50	8/10/2016	9.00
	$\mu\text{g}/\text{m}^3$	50	14/10/2016	10.00
	$\mu\text{g}/\text{m}^3$	50	20/10/2016	7.00
	$\mu\text{g}/\text{m}^3$	50	26/10/2016	70.00
Deposited Dust (DDG1)	$\text{g}/\text{m}^2/\text{month}$	4	Annual	2.26
Deposited Dust (DDG2)	$\text{g}/\text{m}^2/\text{month}$	4	Annual	1.25

Gold Room Stack Monitoring

The Company has two licenced gold room stack monitoring (Figure 1). A summary of the licence conditions associated with this Licence Point is presented in Table 13.

Table 13. Summary of EPL 20179 conditions associated with gold room stack monitoring monitoring.

EPA ID No.	Monitoring Frequency
24	Yearly
39	
Pollutant	
Nitric Oxide (mg/m^3)	

Gold Room stack monitoring is conducted on an annual basis. The last sample was taken in January 2016.

Concentrate Transport

The Company is licenced to transport 50,000 tpa of lead/zinc concentrate during daylight hours. The company is limited to two truck movements per day (entering and leaving the site) averaged over a calendar month. This month, a total of 2,419 tonnes of concentrate was transported to the Hermidale rail siding with an average of 1.65 truck movements per day (Table 14).

Table 14. Summary of the concentrate truck movements from the Hera Mine to Hermidale rail siding for the month.

Date	Time	Company ID	Truck Dry Tonnes
4/10/2016	08:20:00	1156	47.66
4/10/2016	10:45:00	1157	47.98
4/10/2016	11:30:00	1158	47.47
4/10/2016	14:45:00	1159	47.93
4/10/2016	15:30:00	1160	44.79
5/10/2016	07:00:00	1161	48.43
5/10/2016	07:30:00	1162	48.14
5/10/2016	08:20:00	1163	48.63
5/10/2016	10:30:00	1164	47.95
6/10/2016	09:00:00	1165	48.20
6/10/2016	13:00:00	1166	48.51
6/10/2016	15:30:00	1167	48.99
7/10/2016	12:30:00	1168	48.23
7/10/2016	13:00:00	1169	47.76
7/10/2016	13:40:00	1170	47.86
9/10/2016	07:00:00	1171	47.87
9/10/2016	12:00:00	1172	47.52
10/10/2016	07:00:00	1173	47.90
10/10/2016	12:15:00	1174	47.68
11/10/2016	07:00:00	1175	48.82
11/10/2016	16:20:00	1176	48.18
12/10/2016	09:50:00	1177	47.51
14/10/2016	10:30:00	1178	24.72
17/10/2016	12:00:00	1179	48.43
18/10/2016	11:30:00	1180	48.30
18/10/2016	18:00:00	1181	48.87
19/10/2016	10:30:00	1182	49.59
19/10/2016	16:30:00	1183	48.80
20/10/2016	09:00:00	1184	48.83
20/10/2016	09:50:00	1185	48.52
20/10/2016	15:10:00	1186	48.83
20/10/2016	16:00:00	1187	48.11
23/10/2016	08:40:00	1188	48.55
23/10/2016	09:00:00	1189	48.41
23/10/2016	13:45:00	1190	48.82

24/10/2016	14:00:00	1191	24.61
24/10/2016	14:30:00	1192	48.66
25/10/2016	07:40:00	1193	48.91
25/10/2016	15:00:00	1194	48.61
26/10/2016	07:30:00	1195	48.87
26/10/2016	17:00:00	1196	49.27
26/10/2016	17:40:00	1197	48.39
28/10/2016	08:00:00	1198	49.01
28/10/2016	15:15:00	1199	49.29
29/10/2016	11:00:00	1200	48.80
30/10/2016	12:00:00	1201	48.95
31/10/2016	11:00:00	1202	48.97
31/10/2016	11:30:00	1203	48.38
31/10/2016	13:00:00	1204	48.57
31/10/2016	15:00:00	1205	48.34
31/10/2016	16:30:00	1206	48.95
Average Truck Movements per day October 2016		1.65	
Total Tonnes			2419.34

Complaints

In October 2016, one complaint was received regarding a vehicle interaction at the entrance to the Hera Mine between a company light vehicle and a member of the community (Table 15). The member of the community was contacted and staff were reminded to obey road rules.

Table 15. Complaints received by the Company for October 2016

Date	Pollution complaint category
24/10/2016	Vehicle Interaction Burthong Road