

Licensee	Hera Resources Pty Ltd
Address	'The Peak, Burthong Road, Nymagee, NSW 2831
Environmental Protection Licence	20179
Link to Licence	http://www.epa.nsw.gov.au/prpoeoapp/ViewPOEOLicence.aspx?DOCID=32372&SYSUID=1&LICID=20179
Project Approval	10_0191
Reporting Period	February 2017
Date Published	1 May 2017

Weather Monitoring

Hera Resources Pty Ltd (the Company), a wholly owned subsidiary of Aurelia Metals Limited, owns and operates the Hera Mine. The Company has one licenced weather station (licence point 23) associated with the mine (Figure 1). A summary of the licence conditions (Environmental Protection Licence (EPL) 20179) associated with this point is presented in Table 1.



Figure 1. Location of the licence points associated with Gold Room Stack monitoring (Licence Point 24 and Licence Point 39), Blast monitoring and meteorological monitoring (Licence Point 23).

Table 1. Summary of EPL 20179 conditions associated with the licensed weather station.

Parameter	Frequency
Air Temperature (°C)	Continuous
Wind Direction (°)	Continuous
Wind Speed (m/s)	Continuous
Sigma Theta (°)	Continuous
Rainfall (mm)	Continuous
Relative Humidity (%)	Continuous

Meteorological monitoring is conducted on a continuous basis. Table 2 is a summary of the data collected by the weather station in February 2017. Figure 2 is a wind rose for the month.

Table 2. Summary of meteorological data for February 2017.

Pollutant	No. of measurements for month	Min. value	Mean value	Median value	Max. value
Air Temperature (°C)	Continuous	6.13	26.74	27.16	44.56
Wind Speed (m/s)	Continuous	0.00	2.59	2.59	8.39
Sigma Theta (°)	Continuous	3.14	21.80	17.18	100.94
Rainfall (mm)	Continuous	0.00	0.00	0.00	0.00
Relative Humidity (%)	Continuous	10.13	38.82	37.78	84.29

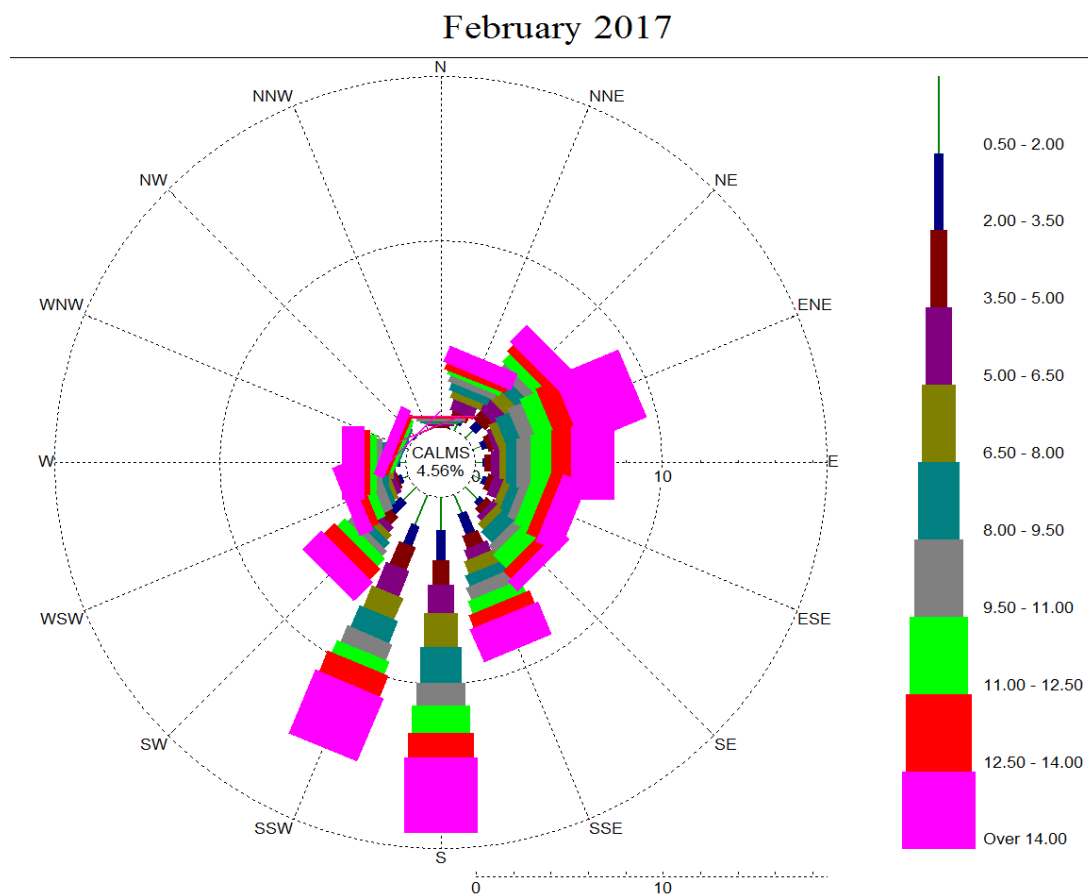


Figure 2. Wind rose February 2017.

Surface Water Monitoring

The Company has six licence points associated with surface waters. Four of these points are located within the Mining Lease (Figure 3) and two are located on Box creek, upstream and downstream of the mining lease (Figure 4). A summary of the licence conditions associated with these licence points is presented in Table 3.



Figure 3. Licensed surface water monitoring points located onsite.

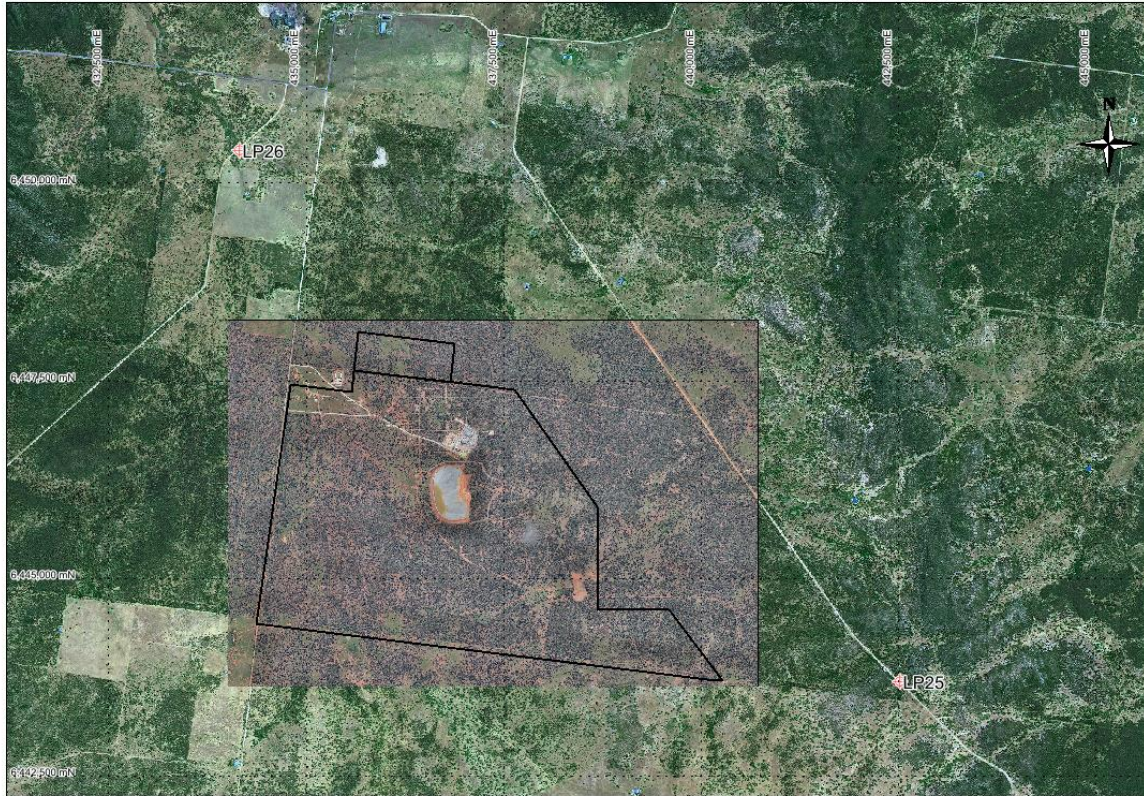


Figure 4. Licensed surface water monitoring points located offsite. The black outline represents the Project Area.

Table 3. Summary of EPL 20179 conditions associated with licensed surface water monitoring points.

EPA ID No.	Monitoring Frequency	Limit
1, 2	Daily during discharge	
3, 4, 25, 26	During discharge	
	Pollutant	
1	Cyanide (weak acid dissociable (WAD))	10 mg/L
2	Cyanide (WAD)	20 mg/L (90 percentile limit)
		30 mg/L (max. limit)
3, 4, 25, 26 (Please note: Limits apply only to Licence Points 3 and 4.)	Aluminium	0.055 mg/L
	Arsenic	0.024 mg/L
	Boron	0.370 mg/L
	Cadmium	0.0002 mg/L
	Copper	0.0014 mg/L
	Cyanide (WAD)	0.007 mg/L
	Electrical Conductivity	1000 (µS/cm)
	Lead	0.0034 mg/L
	Manganese	1.90 mg/L
	Nickel	0.011 mg/L
	Nitrogen (total)	0.5 mg/L
	Oil and Grease	10 mg/L
	pH	6.5-8.5
	Phosphorus (total)	0.025 mg/L
	Silver	0.00005 mg/L
Total suspended solids	50 mg/L	
Zinc	0.008 mg/L	

Table 4 a summary of the surface water quality results. The table has also been colour coordinated by the licence limit that applies to each licence point. Licence Point 3, 4, 25 and 26 did not discharge for the month.

Table 4. Summary of surface water quality results for February 2017.

	Analytes (mg/L)																			
	WAD Cyanide				Al	As	B	Cd	Cu	EC ($\mu\text{S/cm}$)	Pb	Mn	Ni	N	Oil & Grease	pH	Ag	P	TSS	Zn
	Min.	Mean	Median	Max.																
Licence Limits	10				0.055	0.024	0.37	0.0002	0.0014	1000	0.0034	1.9	0.011	0.5	10	6.5-8.5	0.00005	0.025	50	0.008
	20 (90 Percentile)																			
	30 (max.)																			
	0.007																			
Licence Points																				
1	0	0	0	0																
2	0	8.93	5	20																
3	No flow																			
4	No flow																			
25	No flow																			
26	No flow																			

Groundwater Monitoring

The Company has 17 licence points associated with groundwater. These points are located around the Project Area (Figure 5) and are a combination of observation bores, productions bores (red points) and piezometers (purple points). A summary of the licence conditions associated with these licence points is presented in Table 5.



Figure 5. Licensed groundwater and air quality monitoring points.

Table 5. Summary of EPL 20179 conditions associated with licensed groundwater monitoring points.

EPA ID No.	Monitoring Frequency
	Quarterly
	Pollutant
7, 9, 17, 19, 27, 28, 29, 30, 31, 32, 33, 40	Antimony (mg/L)
	Arsenic (mg/L)
	Bicarbonate (mg/L)
	Boron (mg/L)
	Cadmium (mg/L)
	Calcium (mg/L)
	Carbonate (mg/L)
	Chloride (mg/L)
	Chromium (mg/L)
	Copper (mg/L)
	Cyanide (free) (mg/L)
	Cyanide (total) (mg/L)
	Cyanide (WAD) (mg/L)
	Electrical Conductivity ($\mu\text{S}/\text{cm}$)
	Iron (mg/L)
	Lead (mg/L)
	Magnesium (mg/L)
	Mercury (mg/L)
	Molybdenum (mg/L)
	Nickel (mg/L)
	pH
	Potassium (mg/L)
	Silver (mg/L)
	Sodium (mg/L)
	Tin (mg/L)
	Total dissolved solids (mg/L)
	Zinc (mg/L)
7, 27, 28, 29, 30, 34, 35, 36, 37, 38, 40	Standing Water Level (m)
EPA ID No.	Monitoring Frequency
	When water present
	Pollutant
34, 35, 36, 37, 38	Cyanide (free) (mg/L)
	Cyanide (total) (mg/L)
	Cyanide (WAD) (mg/L)
	Electrical Conductivity ($\mu\text{S}/\text{cm}$)
	pH

Quarterly groundwater results were reported in January 2017.

Noise Monitoring

The Company has four licenced monitoring points (R1, R2, R3 and R4) located along the Burthong Road (Figure 6). The locations are strategically placed near the Hera Mine's nearest neighbours. R1 and R2 are measured from the same point as both neighbours are located in very close proximity to each other. A summary of the EPL and Project Approval (PA) conditions associated with these licenced points is presented in Table 6.

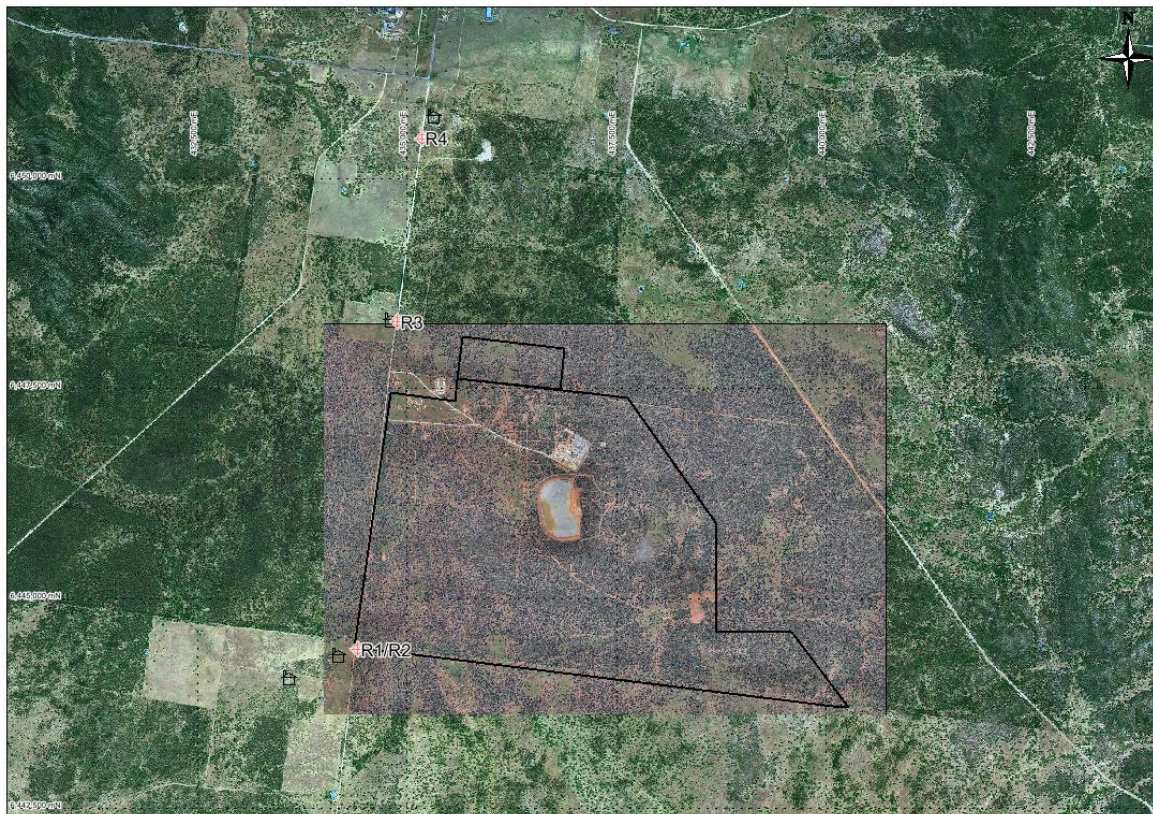


Figure 6. Licensed noise monitoring locations. The black outline represents the approximate project area.

Table 6. Summary of EPL 20179 conditions associated with noise monitoring.

Location	Pollutant - Noise	Limits
R1, R2, R3, R4	Monday to Friday - 0700 hours (hrs) to 1800 hrs	LAeq (15 minute) 35 decibels (dB)
	Monday to Friday - 1800 hrs to 2200 hrs	LAeq (15 minute) 35 dB
	All other times	LAeq (15 minute) 35 dB
		LA1 (1 minute) 45 dB

An independent consultant will be engaged to conduct a noise assessment in the first quarter of 2017.

Blast Monitoring

The blast monitor is located adjacent to the house on the nearest neighbour's property (Figure 1). A summary of the EPL and PA conditions associated with this licenced point are presented in Table 7.

Table 7. Summary of EPL 20179 and PA 10_0191 conditions associated with blast monitoring.

Location	Pollutant	Time Period	Limits
Blast monitoring	Ground vibration	All times	10 mm/s (max.)
	<i>(monitor for every blast)</i>	Day	5 mm/s (95% of total blasts)
		Evening	2 mm/s (95% of total blasts)
		Night and all day on Sundays and Public Holidays	1 mm/s (max.)
	Airblast overpressure	All times	120 dB (max.)
	<i>(monitor for every blast)</i>	All times	115 dB (95% of total blasts)

The Company conducted a total of 58 blasts in February 2017. The characteristics of each blast are presented in Table 8. No exceedances were recorded for the month.

Table 8. Summary of blast monitoring results for February 2017.

Date	Time	Time period	Vibration (mm/s)	Overpressure (dB)
Thursday, 2 February 2017	7:00	Day	<0.35	
Thursday, 2 February 2017	7:00	Day	<0.35	
Friday, 3 February 2017	7:10	Day	<0.35	
Friday, 3 February 2017	7:10	Day	<0.35	
Saturday, 4 February 2017	6:35	Night	<0.35	
Saturday, 4 February 2017	7:04	Day	<0.35	
Saturday, 4 February 2017	7:04	Day	<0.35	
Saturday, 4 February 2017	7:04	Day	<0.35	
Monday, 6 February 2017	6:45	Night	<0.35	
Monday, 6 February 2017	12:50	Day	<0.35	
Tuesday, 7 February 2017	6:45	Night	<0.35	
Tuesday, 7 February 2017	6:45	Night	<0.35	
Tuesday, 7 February 2017	6:45	Night	<0.35	
Tuesday, 7 February 2017	18:45	Evening	<0.35	
Wednesday, 8 February 2017	6:45	Night	<0.35	
Wednesday, 8 February 2017	6:45	Night	<0.35	
Thursday, 9 February 2017	6:50	Night	<0.35	
Thursday, 9 February 2017	6:50	Night	<0.35	
Friday, 10 February 2017	7:18	Day	<0.35	
Friday, 10 February 2017	7:18	Day	<0.35	
Friday, 10 February 2017	18:45	Evening	<0.35	
Saturday, 11 February 2017	6:46	Night	<0.35	
Saturday, 11 February 2017	13:35	Day	<0.35	
Sunday, 12 February 2017	7:15	Sunday	<0.35	
Sunday, 12 February 2017	7:15	Sunday	<0.35	
Monday, 13 February 2017	7:05	Day	<0.35	
Monday, 13 February 2017	7:05	Day	<0.35	

Monday, 13 February 2017	14:00	Day	<0.35	
Tuesday, 14 February 2017	7:14	Day	<0.35	
Tuesday, 14 February 2017	7:14	Day	<0.35	
Tuesday, 14 February 2017	18:40	Evening	<0.35	
Wednesday, 15 February 2017	6:45	Night	<0.35	
Wednesday, 15 February 2017	6:45	Night	<0.35	
Saturday, 18 February 2017	6:45	Night	<0.35	
Saturday, 18 February 2017	6:45	Night	<0.35	
Saturday, 18 February 2017	6:45	Night	<0.35	
Sunday, 19 February 2017	6:30	Sunday	<0.35	
Sunday, 19 February 2017	6:30	Sunday	<0.35	
Sunday, 19 February 2017	20:00	Sunday	0.388	<88
Monday, 20 February 2017	6:40	Night	<0.35	
Monday, 20 February 2017	6:40	Night	<0.35	
Tuesday, 21 February 2017	6:40	Night	<0.35	
Tuesday, 21 February 2017	6:40	Night	<0.35	
Tuesday, 21 February 2017	18:45	Evening	<0.35	
Wednesday, 22 February 2017	6:30	Night	<0.35	
Wednesday, 22 February 2017	6:30	Night	<0.35	
Thursday, 23 February 2017	7:05	Day	<0.35	
Thursday, 23 February 2017	7:05	Day	<0.35	
Thursday, 23 February 2017	13:40	Day	<0.35	
Friday, 24 February 2017	8:15	Day	<0.35	
Friday, 24 February 2017	8:15	Day	<0.35	
Saturday, 25 February 2017	9:30	Day	<0.35	
Saturday, 25 February 2017	14:00	Day	<0.35	
Sunday, 26 February 2017	7:05	Sunday	<0.35	
Sunday, 26 February 2017	18:45	Sunday	0.395	91.48
Monday, 27 February 2017	6:40	Sunday	<0.35	
Tuesday, 28 February 2017	7:30	Day	<0.35	
Tuesday, 28 February 2017	7:30	Day	<0.35	

Air Quality Monitoring

The Company has two High Volume Air Samplers (HVAS), either designed to sample Particulate matter less than 10 µm (PM₁₀) or Total Suspended Particulate (TSP) matter and two Dust Deposition Gauges (DDG). Refer to Figure 5 for location of the sampling points. A summary of the PA conditions associated with these monitoring points is presented in Table 9.

Table 9. Summary of Project Approval conditions associated with dust monitoring.

Pollutant	Averaging Period	Limits
TSP	Annual	90 $\mu\text{g}/\text{m}^3$
PM ₁₀	Annual	30 $\mu\text{g}/\text{m}^3$
PM ₁₀	24 Hour	50 $\mu\text{g}/\text{m}^3$
Deposited Dust	Annual	2 $\text{g}/\text{m}^2/\text{month}$ (Max. increase)
	Annual	4 $\text{g}/\text{m}^2/\text{month}$ (Max. total)

Results for air quality monitoring conducted in February 2017 have been summarised in Table 10. No exceedances have been recorded this month.

Table 10. Summary of air quality monitoring results for February 2017.

Pollutant	Unit	Limit	Averaging Period	Result
TSP	$\mu\text{g}/\text{m}^3$	90	Annual	26.52
PM-10 ($\mu\text{g}/\text{m}^3$)	$\mu\text{g}/\text{m}^3$	30	Annual	13.30
	$\mu\text{g}/\text{m}^3$	50	5/02/2017	21.00
	$\mu\text{g}/\text{m}^3$	50	11/02/2017	32.00
	$\mu\text{g}/\text{m}^3$	50	17/02/2017	33.00
	$\mu\text{g}/\text{m}^3$	50	23/02/2017	46.00
Deposited Dust (DDG1)	$\text{g}/\text{m}^2/\text{month}$	4	Annual	2.17
Deposited Dust (DDG2)	$\text{g}/\text{m}^2/\text{month}$	4	Annual	1.43

Gold Room Stack Monitoring

The Company has two licenced gold room stack monitoring points (Figure 1). A summary of the licence conditions associated with this Licence Point is presented in Table 11.

Table 11. Summary of EPL 20179 conditions associated with gold room stack monitoring monitoring.

EPA ID No.	Monitoring Frequency
24	Yearly
39	
Pollutant	
	Nitric Oxide (mg/m^3)

Gold Room stack monitoring is conducted on an annual basis. is a summary of the annual monitoring which was conducted on 1 and 2 February 2017.

Table 12. Summary of gold room stack monitoring conducted in February 2017.

EPA ID No.	Nitric Oxide (mg/m^3)
24	<3
39	<3

Concentrate Transport

The Company is licenced to transport 50,000 tpa of lead/zinc concentrate during daylight hours. The company is limited to eight truck movements per day (entering and leaving the site) averaged over a calendar month. This month, a total of 2,878.6 tonnes of concentrate was transported to the Hermidale rail siding with an average of 2.07 truck movements per day (Table 13).

Table 13. Summary of the concentrate truck movements from the Hera Mine to Hermidale rail siding for the month.

Date	Time	Company ID	Truck Dry Tonnes
5/02/2017	07:00:00	1372	48.20
6/02/2017	11:30:00	1373	49.46
6/02/2017	11:50:00	1374	49.18
8/02/2017	08:30:00	1375	49.31
9/02/2017	10:00:00	1376	49.11
9/02/2017	13:15:00	1377	49.15
9/02/2017	17:45:00	1378	49.16
10/02/2017	13:45:00	1379	49.32
13/02/2017	12:00:00	1380	50.52
14/02/2017	06:00:00	1381	48.28
14/02/2017	07:00:00	1382	48.09
14/02/2017	10:00:00	1383	48.70
14/02/2017	10:45:00	1384	48.87
14/02/2017	12:00:00	1385	49.14
15/02/2017	09:30:00	1386	49.06
15/02/2017	12:00:00	1387	49.03
15/02/2017	13:20:00	1388	48.87
15/02/2017	16:45:00	1389	48.47
16/02/2017	11:10:00	1390	48.90
16/02/2017	15:50:00	1391	48.63
17/02/2017	07:35:00	1392	49.12
17/02/2017	08:16:00	1393	49.69
17/02/2017	11:30:00	1394	49.64
17/02/2017	12:00:00	1395	49.73
18/02/2017	07:00:00	1396	49.13
18/02/2017	10:00:00	1397	49.82
18/02/2017	13:00:00	1398	49.06
18/02/2017	14:20:00	1399	49.13
21/02/2017	11:30:00	1400	49.46
22/02/2017	12:40:00	1401	48.11
22/02/2017	16:30:00	1402	48.20
23/02/2017	08:00:00	1403	48.11
23/02/2017	12:00:00	1404	48.92
23/02/2017	13:40:00	1405	48.38
24/02/2017	12:00:00	1406	48.35

24/02/2017	12:30:00	1407	48.37
24/02/2017	17:10:00	1408	48.28
25/02/2017	07:00:00	1409	48.66
25/02/2017	10:00:00	1410	47.93
25/02/2017	13:30:00	1411	48.82
25/02/2017	14:15:00	1412	48.83
25/02/2017	17:17:00	1413	49.32
25/02/2017	17:40:00	1414	49.01
27/02/2017	12:30:00	1415	46.83
27/02/2017	13:00:00	1416	46.78
27/02/2017	14:00:00	1417	48.24
27/02/2017	15:30:00	1418	49.28
27/02/2017	16:20:00	1419	49.34
27/02/2017	17:35:00	1420	48.92
27/02/2017	17:45:00	1421	53.88
27/02/2017	18:00:00	1422	53.82
28/02/2017	07:00:00	1423	54.04
28/02/2017	07:30:00	1424	54.12
28/02/2017	08:00:00	1425	53.68
28/02/2017	12:45:00	1426	54.00
28/02/2017	13:15:00	1427	54.12
28/02/2017	16:20:00	1428	54.02
28/02/2017	16:40:00	1429	54.00
Average Truck Movements per day February 2017		2.07	
Total Tonnes			2,878.6

Complaints

No complaints were received in February 2017.