

Licensee	Hera Resources Pty Ltd
Address	'The Peak, Burthong Road, Nymagee, NSW 2831
Environmental Protection Licence	20179
Link to Licence	http://www.epa.nsw.gov.au/prpoeoapp/ViewPOEOLicence.aspx?DOCID=32372&SYSUID=1&LICID=20179
Project Approval	10_0191
Reporting Period	September 2017
Date Published	11 Dec 2017

Weather Monitoring

Hera Resources Pty Ltd (the Company), a wholly owned subsidiary of Aurelia Metals Limited, owns and operates the Hera Mine. The Company has one licenced weather station (licence point 23) associated with the mine (Figure 1). A summary of the licence conditions (Environmental Protection Licence (EPL) 20179) associated with this point is presented in Table 1.



Figure 1. Location of the licence points associated with Gold Room Stack monitoring (Licence Point 24 and Licence Point 39), blast monitoring and meteorological monitoring (Licence Point 23).

Table 1. Summary of EPL 20179 conditions associated with the licensed weather station.

Parameter	Frequency
Air Temperature (°C)	Continuous
Wind Direction (°)	Continuous
Wind Speed (m/s)	Continuous
Sigma Theta (°)	Continuous
Rainfall (mm)	Continuous
Relative Humidity (%)	Continuous

Meteorological monitoring is conducted on a continuous basis. Table 2 is a summary of the data collected by the weather station in September 2017. Figure 2 is a wind rose for the month.

Table 2. Summary of meteorological data for September 2017.

Pollutant	No. of measurements for month	Min. value	Mean value	Median value	Max. value
Air Temperature (°C)	Continuous	-3.33	14.13	14.48	36.09
Wind Speed (m/s)	Continuous	0.00	2.33	2.02	9.98
Sigma Theta (°)	Continuous	1.55	23.12	18.54	101.67
Rainfall (mm)	Continuous	0.00	0.00	0.00	0.60
Relative Humidity (%)	Continuous	8.41	44.64	42.65	90.98

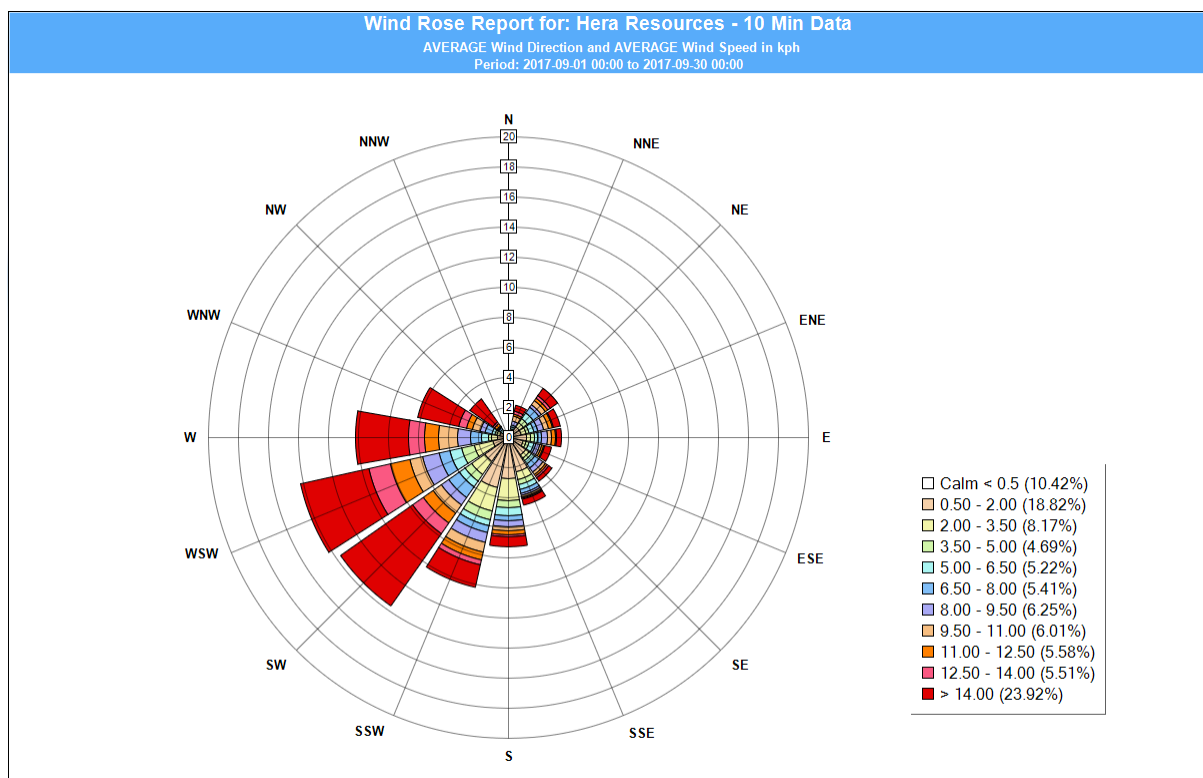


Figure 2. Wind rose September 2017.

Surface Water Monitoring

The Company has six licence points associated with surface waters. Four of these points are located within the Mining Lease (Figure 3) and two are located on Box creek, upstream and downstream of the mining lease (Figure 4). A summary of the licence conditions associated with these licence points is presented in Table 3.



Figure 3. Licensed surface water monitoring points located onsite.

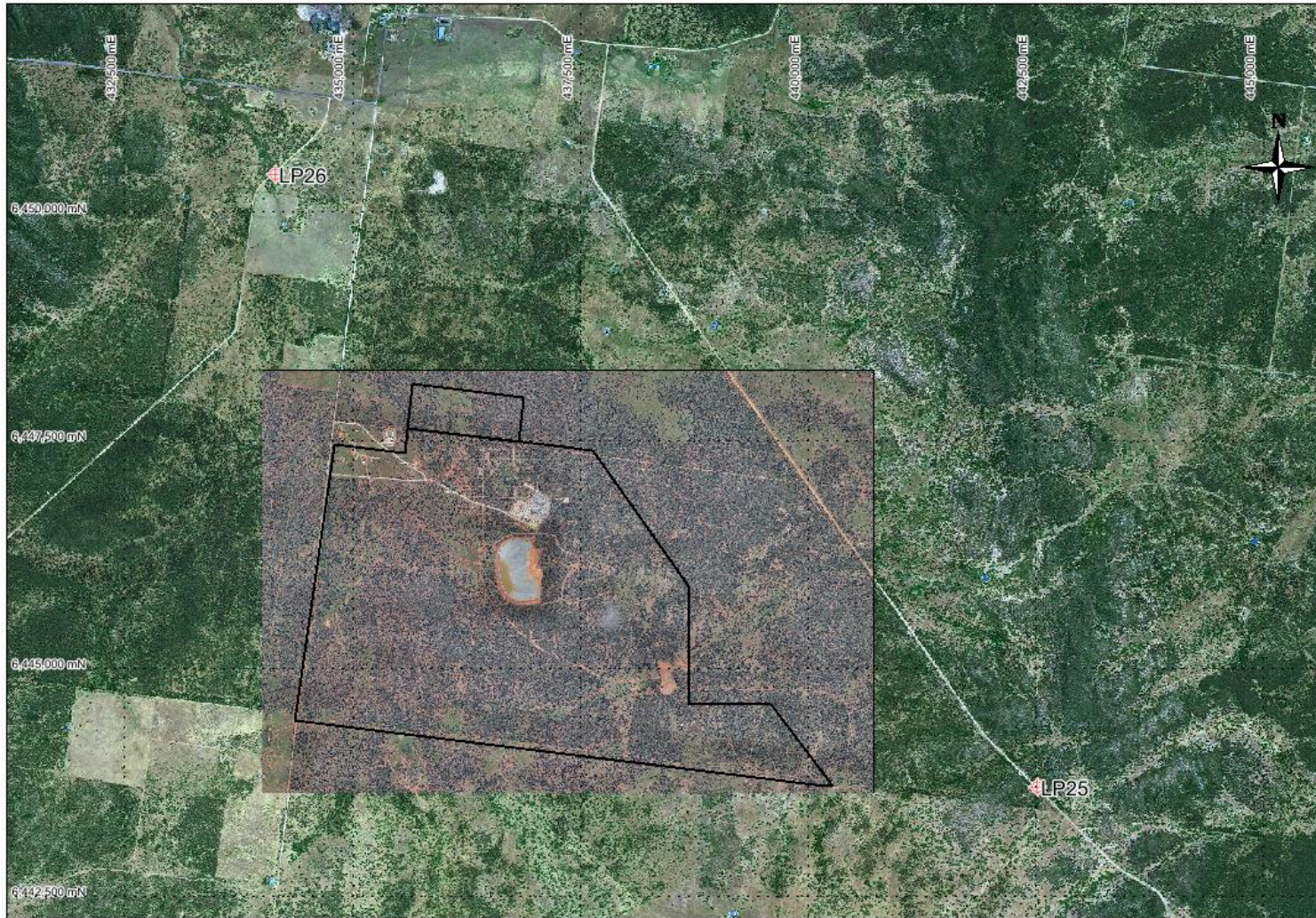


Figure 4. Licensed surface water monitoring points located offsite. The black outline represents the mining leases.

Table 3. Summary of EPL 20179 conditions associated with licensed surface water monitoring points.

EPA ID No.	Monitoring Frequency	Limit
1, 2	Daily during discharge	
3, 4, 25, 26	During discharge	
	Pollutant	
1	Cyanide (weak acid dissociable (WAD))	10 mg/L
2	Cyanide (WAD)	20 mg/L (90 percentile limit)
		30 mg/L (max. limit)
3, 4, 25, 26 (Please note: Limits apply only to Licence Points 3 and 4.)	Aluminium	0.055 mg/L
	Arsenic	0.024 mg/L
	Boron	0.370 mg/L
	Cadmium	0.0002 mg/L
	Copper	0.0014 mg/L
	Cyanide (WAD)	0.007 mg/L
	Electrical Conductivity	1000 (µS/cm)
	Lead	0.0034 mg/L
	Manganese	1.90 mg/L
	Nickel	0.011 mg/L
	Nitrogen (total)	0.5 mg/L
	Oil and Grease	10 mg/L
	pH	6.5-8.5
	Phosphorus (total)	0.025 mg/L
	Silver	0.00005 mg/L
Total suspended solids	50 mg/L	
Zinc	0.008 mg/L	

Table 4 is a summary of the surface water quality results. The table has been colour coordinated by the licence limit that applies to each licence point. Licence Point 3, 4, 25 and 26 did not discharge for the month. An elevated WAD cyanide result was recorded at Licence Point 1 on 9 Sep 2017. This non-compliance was reported to the Environment Protection Authority 15 Sep 2017.

Table 4. Summary of surface water quality results for September 2017.

	Analytes (mg/L)																			
	WAD Cyanide				Al	As	B	Cd	Cu	EC (µS/cm)	Pb	Mn	Ni	N	Oil & Grease	pH	Ag	P	TSS	Zn
	Min.	Mean	Median	Max.																
Licence Limits	10				0.055	0.024	0.37	0.0002	0.0014	1000	0.0034	1.9	0.011	0.5	10	6.5-8.5	0.00005	0.025	50	0.008
	20 (90 Percentile)																			
	30 (max.)																			
	0.007																			
Licence Points																				
1	0	1.8	0	12																
2	0	2.57	1	15																
3	No flow																			
4	No flow																			
25	No flow																			
26	No flow																			

Groundwater Monitoring

The Company has 17 licence points associated with groundwater. These points are located around the Project Area (Figure 5) and are a combination of observation bores, productions bores and piezometers. A summary of the licence conditions associated with these licence points is presented in Table 5

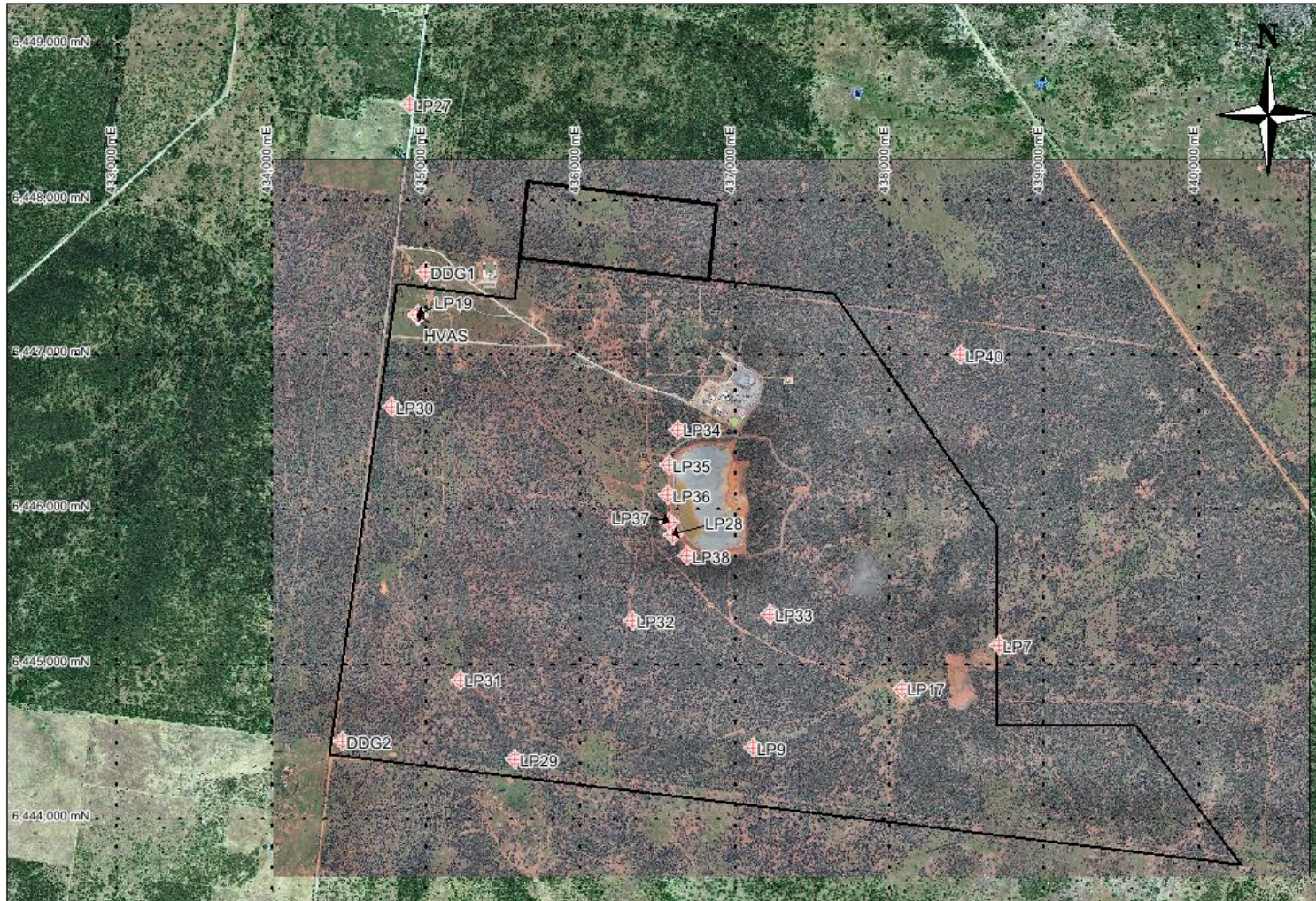


Figure 5. Licensed groundwater and air quality monitoring points.

Table 5. Summary of EPL 20179 conditions associated with licensed groundwater monitoring points.

EPA ID No.	Monitoring Frequency
	Quarterly
	Pollutant
7, 9, 17, 19, 27, 28, 29, 30, 31, 32, 33, 40	Antimony (mg/L)
	Arsenic (mg/L)
	Bicarbonate (mg/L)
	Boron (mg/L)
	Cadmium (mg/L)
	Calcium (mg/L)
	Carbonate (mg/L)
	Chloride (mg/L)
	Chromium (mg/L)
	Copper (mg/L)
	Cyanide (free) (mg/L)
	Cyanide (total) (mg/L)
	Cyanide (WAD) (mg/L)
	Electrical Conductivity (μ S/cm)
	Iron (mg/L)
	Lead (mg/L)
	Magnesium (mg/L)
	Mercury (mg/L)
	Molybdenum (mg/L)
	Nickel (mg/L)
	pH
	Potassium (mg/L)
	Silver (mg/L)
	Sodium (mg/L)
	Tin (mg/L)
	Total dissolved solids (mg/L)
	Zinc (mg/L)
7, 27, 28, 29, 30, 34, 35, 36, 37, 38, 40	Standing Water Level (m)
EPA ID No.	Monitoring Frequency
	When water present
	Pollutant
34, 35, 36, 37, 38	Cyanide (free) (mg/L)
	Cyanide (total) (mg/L)
	Cyanide (WAD) (mg/L)
	Electrical Conductivity (μ S/cm)
	pH

Quarterly groundwater results were last reported in July 2017.

Noise Monitoring

The Company has four licenced monitoring points (R1, R2, R3 and R4) located along the Burthong Road (Figure 6). The locations are strategically placed near the Hera Mine's nearest neighbours. R1 and R2 are measured from the same point as both neighbours are located in very close proximity to each other. A summary of the EPL and Project Approval (PA) conditions associated with these licenced points is presented in Table 6.

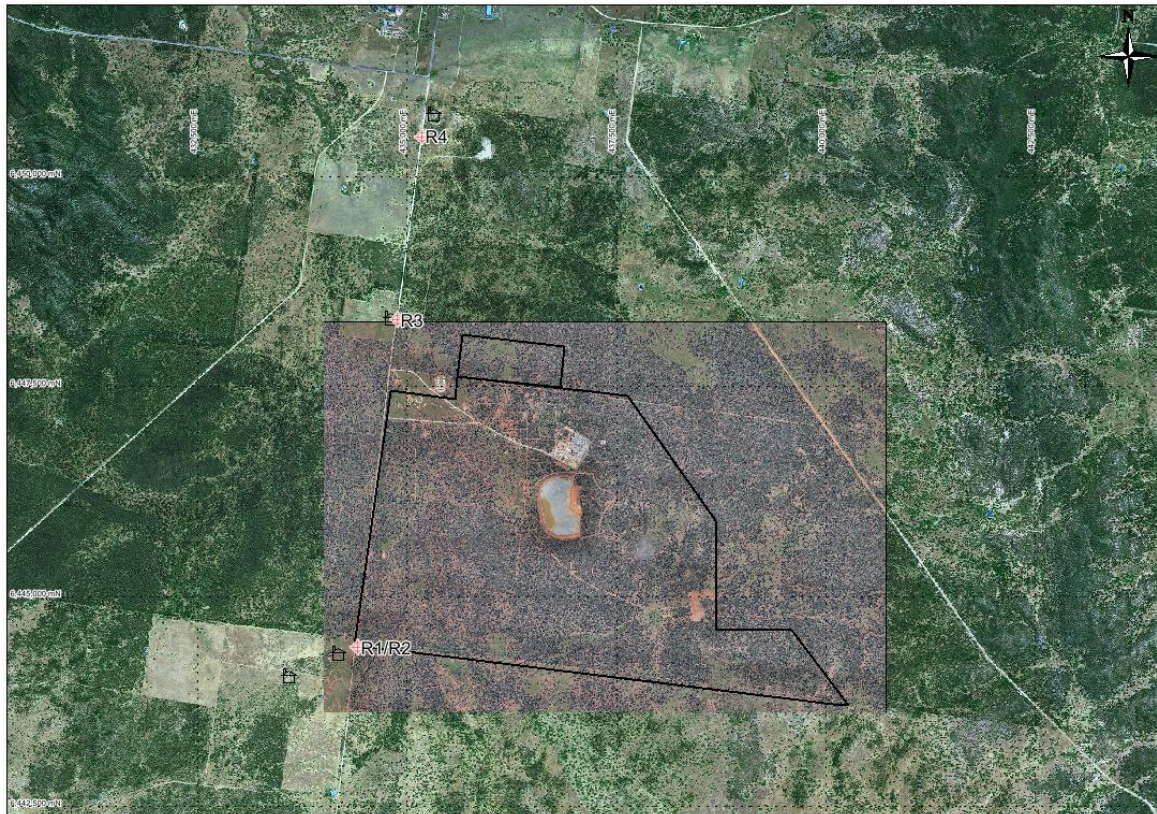


Figure 6. Licensed noise monitoring locations. The black outline represents the approximate project area.

Table 6. Summary of EPL 20179 conditions associated with noise monitoring.

Location	Pollutant - Noise	Limits
R1, R2, R3, R4	Monday to Friday - 0700 hours (hrs) to 1800 hrs	LAeq (15 minute) 35 decibels (dB)
	Monday to Friday - 1800 hrs to 2200 hrs	LAeq (15 minute) 35 dB
	All other times	LAeq (15 minute) 35 dB
		LA1 (1 minute) 45 dB

An independent consultant (EMM Consultants) was engaged to conduct a noise assessment in July 2017. The results were reported in the July 2017 Environment Report.

Blast Monitoring

The blast monitor is located adjacent to the house on the nearest neighbour's property (Figure 1). A summary of the EPL and PA conditions associated with this licenced point are presented in Table 7.

Table 7. Summary of EPL 20179 and PA 10_0191 conditions associated with blast monitoring.

Location	Pollutant	Time Period	Limits
Blast monitoring	Ground vibration	All times	10 mm/s (max.)
	<i>(monitor for every blast)</i>	Day	5 mm/s (95% of total blasts)
		Evening	2 mm/s (95% of total blasts)
		Night and all day on Sundays and Public Holidays	1 mm/s (max.)
Airblast overpressure	All times	120 dB (max.)	
	<i>(monitor for every blast)</i>	All times	115 dB (95% of total blasts)

The Company conducted a total of 89 blasts in September 2017. The characteristics of each blast are presented in Table 8. No exceedances were recorded for the month.

Table 8. Summary of blast monitoring results for September 2017.

Date	Time	Time period	Vibration (mm/s)	Overpressure (dB)
Friday, 1 September 2017	6:45	Night	<0.35	
Friday, 1 September 2017	18:30	Evening	<0.35	
Friday, 1 September 2017	18:30	Evening	<0.35	
Friday, 1 September 2017	18:30	Evening	<0.35	
Saturday, 2 September 2017	6:30	Night	<0.35	
Saturday, 2 September 2017	18:30	Evening	<0.35	
Saturday, 2 September 2017	18:30	Evening	<0.35	
Saturday, 2 September 2017	18:30	Evening	<0.35	
Sunday, 3 September 2017	6:45	Sunday	<0.35	
Sunday, 3 September 2017	18:20	Sunday	<0.35	
Sunday, 3 September 2017	18:20	Sunday	<0.35	
Sunday, 3 September 2017	18:20	Sunday	<0.35	
Monday, 4 September 2017	18:45	Evening	0.415	95.90
Monday, 4 September 2017	18:45	Evening	<0.35	
Tuesday, 5 September 2017	18:30	Evening	<0.35	
Tuesday, 5 September 2017	18:30	Evening	<0.35	
Tuesday, 5 September 2017	18:30	Evening	<0.35	
Tuesday, 5 September 2017	18:30	Evening	<0.35	
Wednesday, 6 September 2017	18:45	Evening	<0.35	
Thursday, 7 September 2017	13:00	Day	<0.35	
Thursday, 7 September 2017	18:30	Evening	<0.35	
Thursday, 7 September 2017	18:30	Evening	<0.35	
Thursday, 7 September 2017	18:30	Evening	<0.35	
Saturday, 9 September 2017	7:30	Day	<0.35	
Saturday, 9 September 2017	19:00	Evening	<0.35	
Saturday, 9 September 2017	19:00	Evening	<0.35	
Sunday, 10 September 2017	18:45	Sunday	<0.35	
Sunday, 10 September 2017	18:45	Sunday	<0.35	
Sunday, 10 September 2017	18:45	Sunday	<0.35	
Monday, 11 September 2017	18:30	Evening	<0.35	
Tuesday, 12 September 2017	7:00	Day	<0.35	
Tuesday, 12 September 2017	18:45	Evening	<0.35	
Tuesday, 12 September 2017	18:45	Evening	<0.35	
Tuesday, 12 September 2017	18:45	Evening	<0.35	
Thursday, 14 September 2017	19:00	Evening	<0.35	
Thursday, 14 September 2017	19:00	Evening	<0.35	
Thursday, 14 September 2017	19:00	Evening	<0.35	
Thursday, 14 September 2017	19:00	Evening	<0.35	
Friday, 15 September 2017	19:00	Evening	<0.35	
Friday, 15 September 2017	19:00	Evening	<0.35	
Friday, 15 September 2017	19:00	Evening	<0.35	
Saturday, 16 September 2017	6:45	Night	<0.35	
Saturday, 16 September 2017	14:00	Day	0.808	108.80
Saturday, 16 September 2017	14:00	Day	0.808	108.80

Saturday, 16 September 2017	14:00	Day	0.808	108.80
Saturday, 16 September 2017	14:00	Day	0.808	108.80
Saturday, 16 September 2017	14:00	Day	0.808	108.80
Sunday, 17 September 2017	2:00	Sunday	<0.35	
Sunday, 17 September 2017	19:11	Sunday	<0.35	
Sunday, 17 September 2017	19:11	Sunday	<0.35	
Sunday, 17 September 2017	19:11	Sunday	<0.35	
Sunday, 17 September 2017	19:11	Sunday	<0.35	
Monday, 18 September 2017	6:45	Night	<0.35	
Monday, 18 September 2017	6:45	Night	<0.35	
Monday, 18 September 2017	7:01	Day	<0.35	
Monday, 18 September 2017	7:01	Day	<0.35	
Monday, 18 September 2017	7:01	Day	<0.35	
Tuesday, 19 September 2017	6:45	Night	<0.35	
Tuesday, 19 September 2017	6:45	Night	<0.35	
Tuesday, 19 September 2017	19:00	Evening	<0.35	
Wednesday, 20 September 2017	6:30	Night	<0.35	
Wednesday, 20 September 2017	6:30	Night	<0.35	
Friday, 22 September 2017	7:00	Day	<0.35	
Friday, 22 September 2017	7:00	Day	<0.35	
Friday, 22 September 2017	7:00	Day	<0.35	
Friday, 22 September 2017	7:00	Day	<0.35	
Saturday, 23 September 2017	7:00	Day	<0.35	
Saturday, 23 September 2017	7:00	Day	<0.35	
Sunday, 24 September 2017	7:00	Sunday	<0.35	
Sunday, 24 September 2017	7:00	Sunday	<0.35	
Sunday, 24 September 2017	6:45	Sunday	<0.35	
Sunday, 24 September 2017	19:00	Sunday	<0.35	
Monday, 25 September 2017	7:00	Day	<0.35	
Monday, 25 September 2017	7:00	Day	<0.35	
Tuesday, 26 September 2017	7:00	Day	<0.35	
Tuesday, 26 September 2017	7:00	Day	<0.35	
Tuesday, 26 September 2017	19:00	Evening	<0.35	
Wednesday, 27 September 2017	7:00	Day	<0.35	
Wednesday, 27 September 2017	7:00	Day	<0.35	
Wednesday, 27 September 2017	7:00	Day	<0.35	
Thursday, 28 September 2017	7:00	Day	<0.35	
Thursday, 28 September 2017	19:00	Evening	<0.35	
Thursday, 28 September 2017	19:00	Evening	<0.35	
Friday, 29 September 2017	19:00	Evening	<0.35	
Saturday, 30 September 2017	7:00	Day	<0.35	
Saturday, 30 September 2017	7:00	Day	<0.35	
Saturday, 30 September 2017	7:00	Day	<0.35	
Saturday, 30 September 2017	19:00	Evening	<0.35	
Saturday, 30 September 2017	19:00	Evening	<0.35	

Air Quality Monitoring

The Company has two High Volume Air Samplers (HVAS), designed to sample Particulate matter less than 10 µm (PM₁₀) or Total Suspended Particulate (TSP) matter and two Dust Deposition Gauges (DDG). Refer to Figure 5 for location of the sampling points. A summary of the PA conditions associated with these monitoring points is presented in Table 9.

Table 9. Summary of Project Approval conditions associated with dust monitoring.

Pollutant	Averaging Period	Limits
TSP	Annual	90 µg/m ³
PM ₁₀	Annual	30 µg/m ³
PM ₁₀	24 Hour	50 µg/m ³
Deposited Dust	Annual	2 g/m ² /month (Max. increase)
	Annual	4 g/m ² /month (Max. total)

Results for air quality monitoring conducted in September 2017 have been summarised in Table 10. All results were within licence conditions.

Table 10. Summary of air quality monitoring results for September 2017.

Pollutant	Unit	Limit	Averaging Period	Result
TSP	µg/m ³	90	Annual	38.86
PM-10 (µg/m ³)	µg/m ³	30	Annual	19.23
	µg/m ³	50	3/09/2017	19.00
	µg/m ³	50	9/09/2017	11.00
	µg/m ³	50	15/09/2017	9.00
	µg/m ³	50	21/09/2017	20.00
	µg/m ³	50	27/09/2017	33.00
Deposited Dust (DDG1)	g/m ² /month	4	Annual	2.00
Deposited Dust (DDG2)	g/m ² /month	4	Annual	1.93

Gold Room Stack Monitoring

The Company has two licenced gold room stack monitoring points (Figure 1). A summary of the licence conditions associated with this licence point is presented in Table 11.

Table 11. Summary of EPL 20179 conditions associated with gold room stack monitoring.

EPA ID No.	Monitoring Frequency
24	Yearly
39	
Pollutant	
Nitric Oxide (mg/m ³)	

Gold Room stack monitoring is conducted on an annual basis. The results from this monitoring were reported in August 2017.

Concentrate Transport

The Company is licenced to transport 50,000 tpa of lead/zinc concentrate during daylight hours. The company is limited to eight truck movements per day (entering and leaving the site) averaged over a calendar month (Table 12). One incident was recorded this month when a truck departed site prior to 7am which is in breach of project approval conditions. The incident occurred on 29 Sep 2017 and was reported to the Department of Planning and Environment on

Table 12. Summary of the concentrate truck movements from the Hera Mine to Hermidale rail siding for the month.

Date	Time	Company ID	Truck Dry Tonnes
1/09/2017	11:15:00	1818	49.00
1/09/2017	14:30:00	1819	48.62
1/09/2017	15:30:00	1820	49.44
5/09/2017	12:30:00	1821	49.60
5/09/2017	13:00:00	1822	49.75
5/09/2017	14:15:00	1823	49.71
6/09/2017	07:30:00	1824	50.82
6/09/2017	07:45:00	1825	49.26
6/09/2017	10:30:00	1826	48.84
6/09/2017	11:00:00	1827	48.59
6/09/2017	12:00:00	1828	48.62
6/09/2017	13:40:00	1829	49.23
6/09/2017	15:30:00	1830	48.37
7/09/2017	07:15:00	1831	49.95
7/09/2017	08:30:00	1832	49.30
8/09/2017	12:00:00	1833	49.20
8/09/2017	12:30:00	1834	49.15
10/09/2017	12:00:00	1835	49.06
10/09/2017	12:30:00	1836	49.15
15/09/2017	11:00:00	1837	49.23
15/09/2017	11:30:00	1838	49.88
15/09/2017	14:05:00	1839	50.84
18/09/2017	12:00:00	1840	50.99
18/09/2017	12:30:00	1841	48.56
20/09/2017	09:00:00	1842	47.72
20/09/2017	11:00:00	1843	48.62
20/09/2017	11:45:00	1845	48.73
20/09/2017	12:49:00	1844	49.18
20/09/2017	13:00:00	1846	48.65
20/09/2017	15:30:00	1847	49.21
21/09/2017	07:00:00	1849	50.17
21/09/2017	07:00:00	1848	49.58
21/09/2017	08:30:00	1850	55.50
21/09/2017	11:11:00	1851	49.49

21/09/2017	11:30:00	1852	49.40
21/09/2017	12:00:00	1853	51.25
21/09/2017	12:30:00	1854	48.62
21/09/2017	14:38:00	1855	48.60
21/09/2017	15:30:00	1856	48.60
22/09/2017	07:15:00	1857	48.58
22/09/2017	07:40:00	1858	46.81
26/09/2017	07:40:00	1859	51.09
26/09/2017	10:00:00	1860	51.38
26/09/2017	11:30:00	1861	49.00
27/09/2017	14:15:00	1862	50.28
27/09/2017	15:00:00	1863	45.37
27/09/2017	15:30:00	1864	47.88
27/09/2017	16:00:00	1865	47.28
28/09/2017	08:45:00	1866	45.54
28/09/2017	09:00:00	1867	46.08
28/09/2017	12:00:00	1868	46.79
28/09/2017	12:15:00	1869	48.33
28/09/2017	15:00:00	1870	51.64
28/09/2017	15:15:00	1871	50.32
29/09/2017	06:00:00	1872	49.16
29/09/2017	07:00:00	1873	51.18
29/09/2017	09:00:00	1874	49.64
29/09/2017	09:15:00	1875	47.32
29/09/2017	09:30:00	1876	42.73
29/09/2017	12:30:00	1877	45.25
29/09/2017	13:30:00	1878	44.25
29/09/2017	16:00:00	1879	50.28
29/09/2017	17:00:00	1880	47.78
30/09/2017	09:00:00	1881	47.23
30/09/2017	09:30:00	1882	48.83
30/09/2017	12:00:00	1883	52.02
30/09/2017	12:30:00	1884	50.65
30/09/2017	15:00:00	1885	46.34
Average Truck Movements per day September 2017		2.27	
Total Tonnes			3,327.47

Complaints

No complaints were received this month.