



Hera Mine Community Consultative Committee Minutes

The meeting was held on 7 February 2019 at the Hera Mine, Burthong Road, Nymagee.

Meeting commenced at 10.15am.

Present at the Meeting:

Garry West (Independent Chair)

Cr. Peter Maxwell (Cobar Shire Council Representative)

Dolly Betts (Community Representative)

Des (David) Hill (Community Representative)

Phil Harley (Community Representative)

Mark Williams (Aurelia Metals Ltd. Representative, Senior Environment Advisor)

Jonathon Thompson (Aurelia Metals Ltd, Representative, Group Manager, Environment)

Scott Ramsay (Aurelia metals Ltd, Representative, General Manager, Hera Mine Project)

1. Apologies

Don Cameron (Community Representative)

Graeme Bourke (Bogan Shire Council Representative)

2. Pecuniary and other interests

No new declarations

3. Confirmation of Minutes

Minutes from the CCC meeting of 1 November 2018 had been distributed via email and were accepted as a correct record.

4. Business Arising from Previous Meeting

NIL

5. Correspondence

NIL

6. Company Report

A presentation was provided detailing the environmental performance of the Hera Mine operations. (A copy will accompany the final minutes and be placed on the company website);

No complaints were received for the reporting period.

No reportable injuries. Pybar recordable injury frequency rate is declining. Underground hazard reporting commenced in November 2018 which has helped deliver this good result.

J. Thompson advised the Statement of Environmental Effects (SoEE) is now expected to be submitted

to DPE late February or early March 2019 and will then go on display for public consultation.

J. Thompson gave an overview of the environmental performance. No exceedances were recorded.

S. Ramsay provided an overview of their ongoing exploration program which slowed over the Christmas/New Year period.

The company provided a summary of production and processing performance.

7. **Matters which the Community Representatives wish to raise with the Mine Operator**

Question was raised as to when more VPA expenditure is likely to occur in Nymagee. Cobar Shire Council to be contacted.

8. **Community Engagement Opportunities**

The company was thanked for their ongoing community support. The Miners Memorial at Cobar is being upgraded and the company and local community members are contributing. The company sponsored a snake information session for the community which was well attended.

9. **Meeting Dates**

CCC meeting dates for 2019 are as follows: 2 May 2019, 1 August 2019 and 7 November 2019.

10. **General Business**

It was noted that there was an increase in general freight traffic on the Hermidale to Nymagee Road since sealing was completed. It was questioned whether a base line traffic count was in place so as to assist planning for future maintenance. The Chair is to request Bogan Shire Council to respond at the next meeting

11. **Next Meeting**

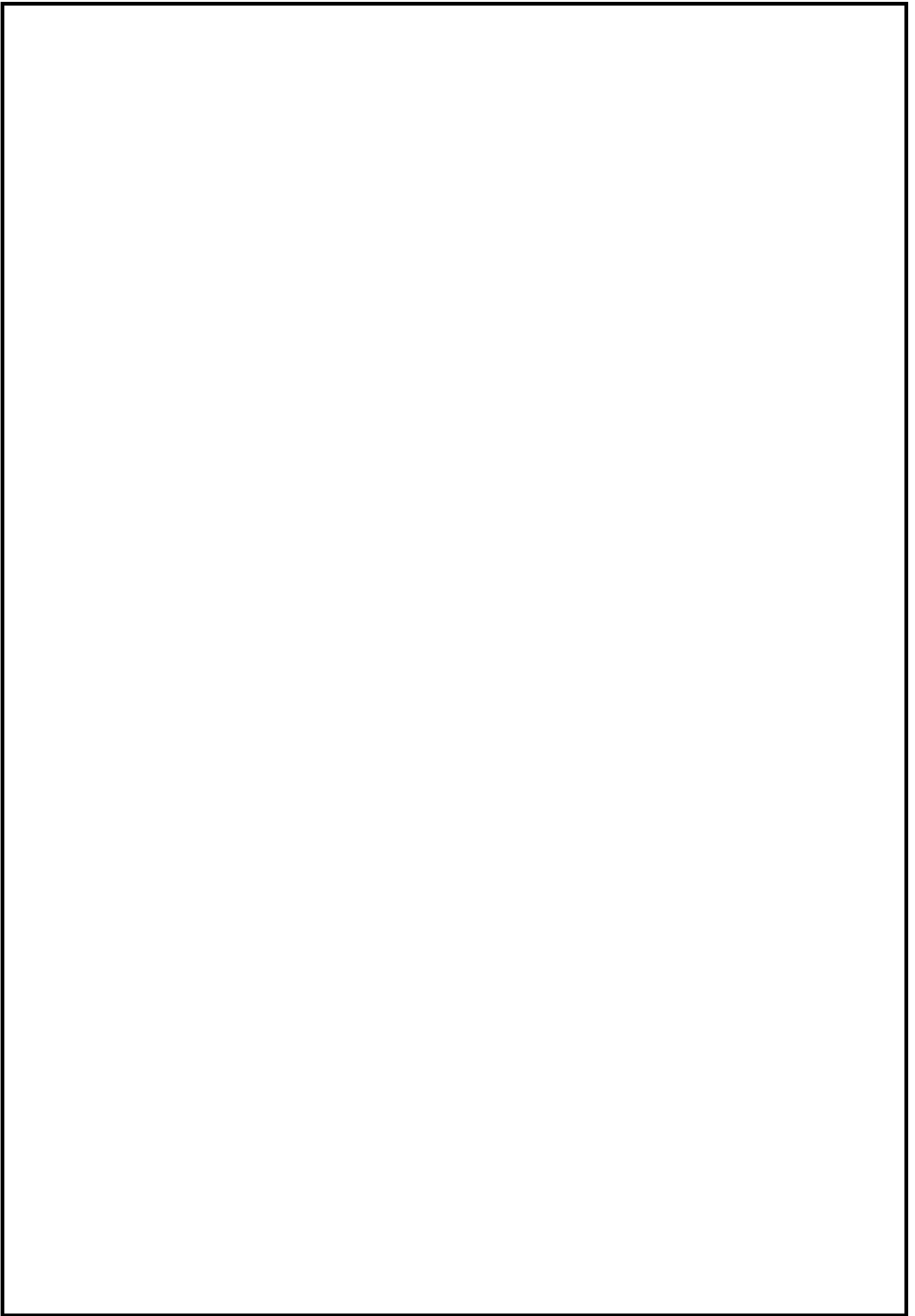
2 May 2019 commencing at 10am

Meeting Closed: 11.20 am

ACTION ITEMS

Item	Action	By Whom
------	--------	---------

NIL

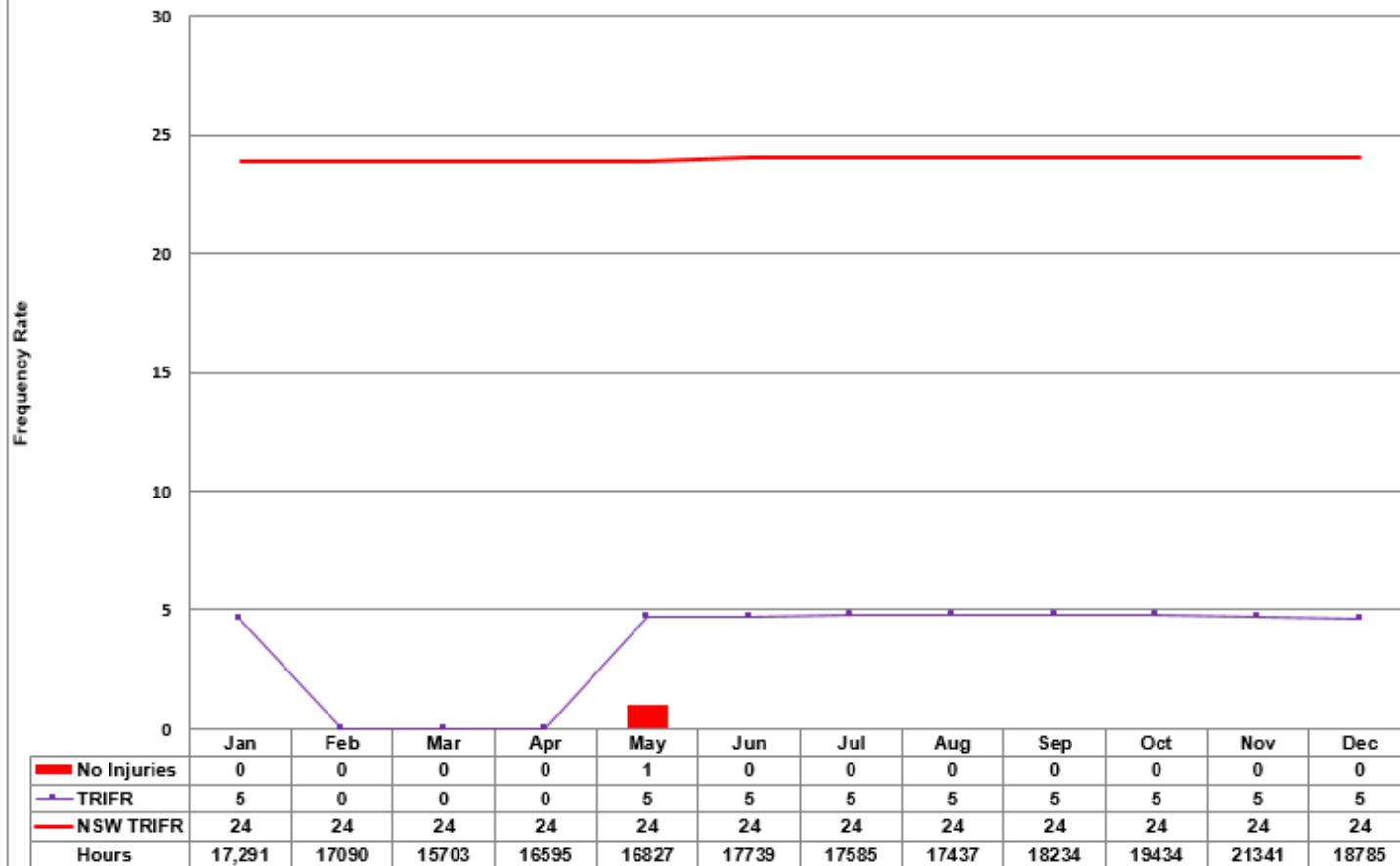




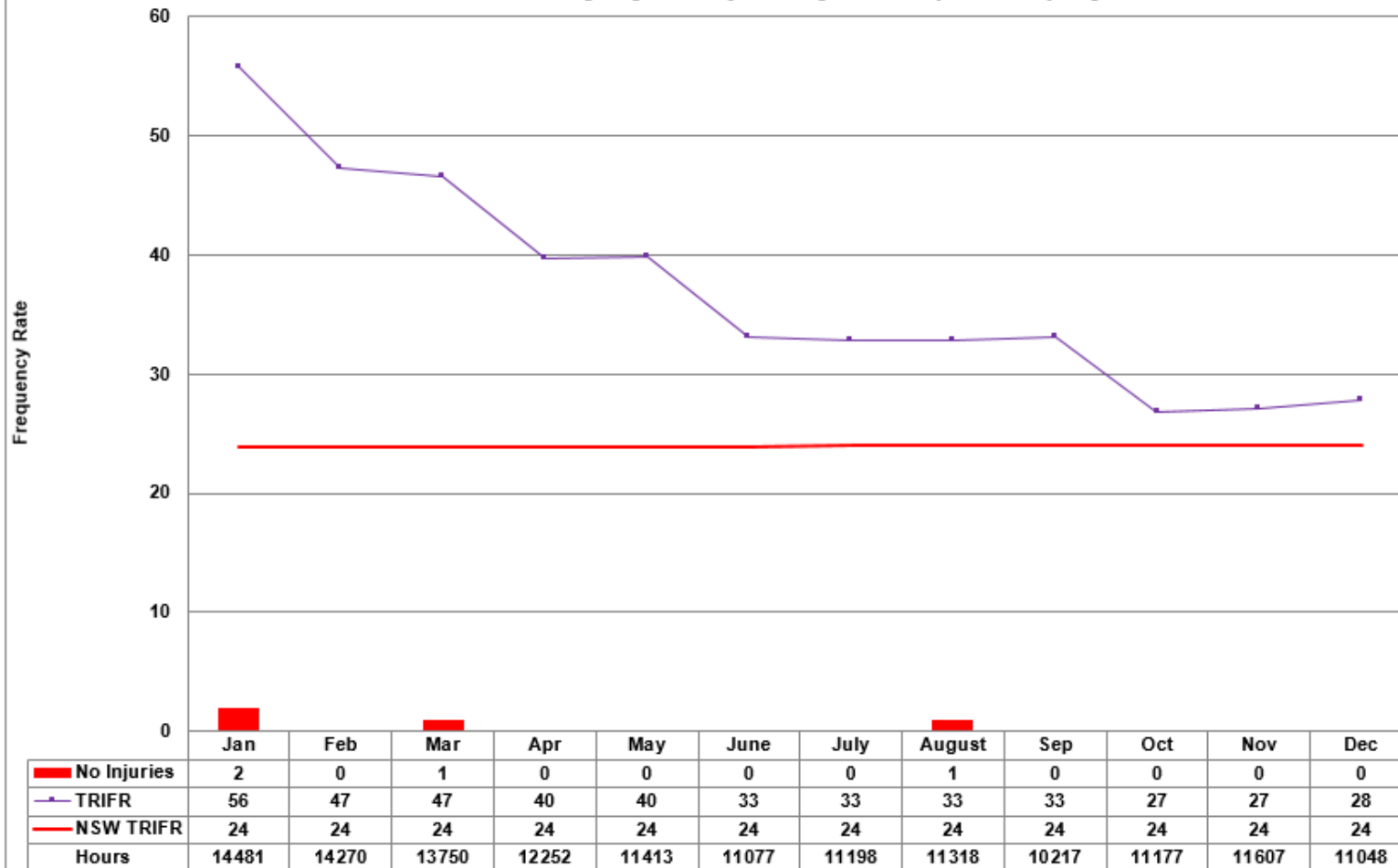
HERA PROJECT

CCC – December 2019

Total Recordable Injury Frequency Rate (TRIFR) Aurelia



Total Recordable Injury Frequency Rate (TRIFR) Pybar



Current Scope of MOD5

- No change to scope as reported to November meeting:
 - Increase the rate of transportation of concentrate from Hera Mine to the Hermidale rail siding from 50 000 t per calendar year to 60 000 t per calendar year;
 - Installation of an external Tailings Storage Facility; and
 - Receipt water from dewatering of the Nymagee Copper Mine for use in processing operations at the Hera Mine or evaporation within the proposed decant pond.

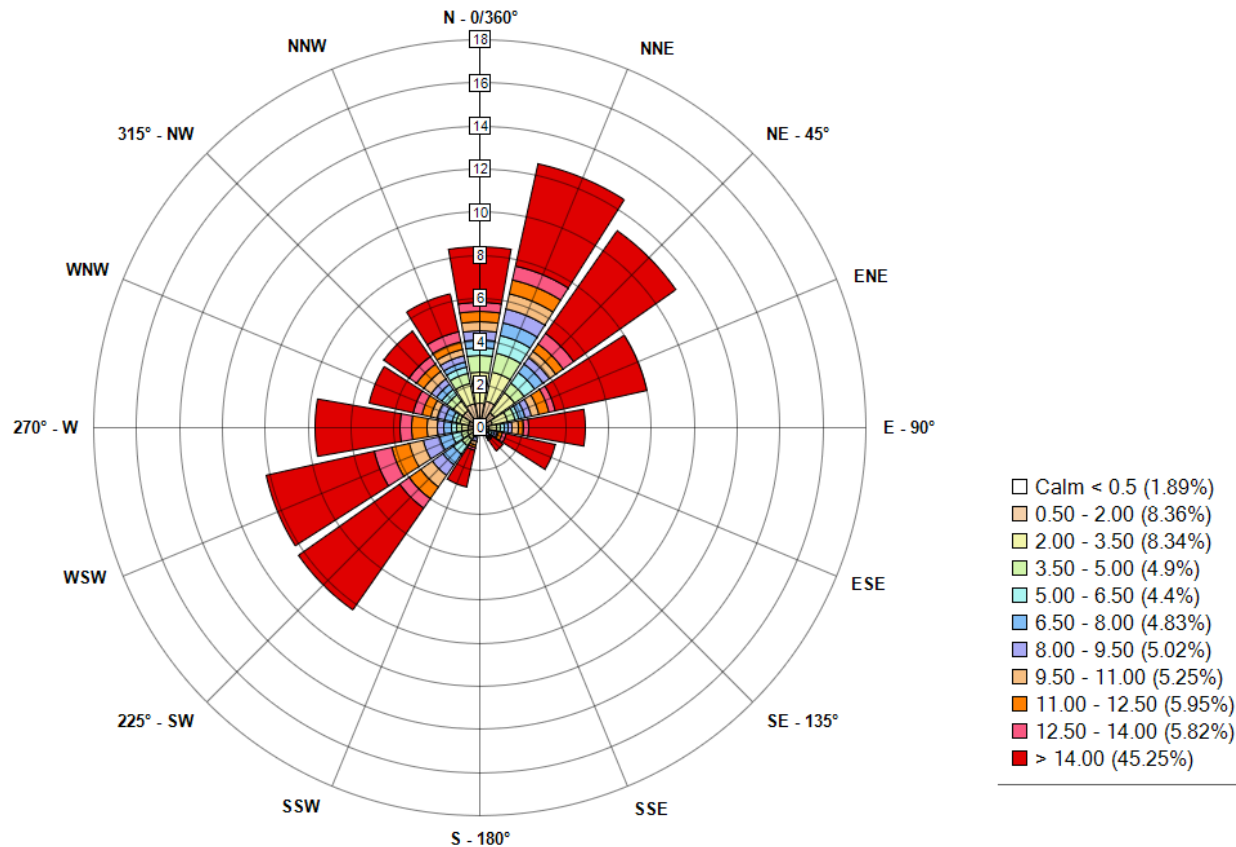
Progress of MOD5

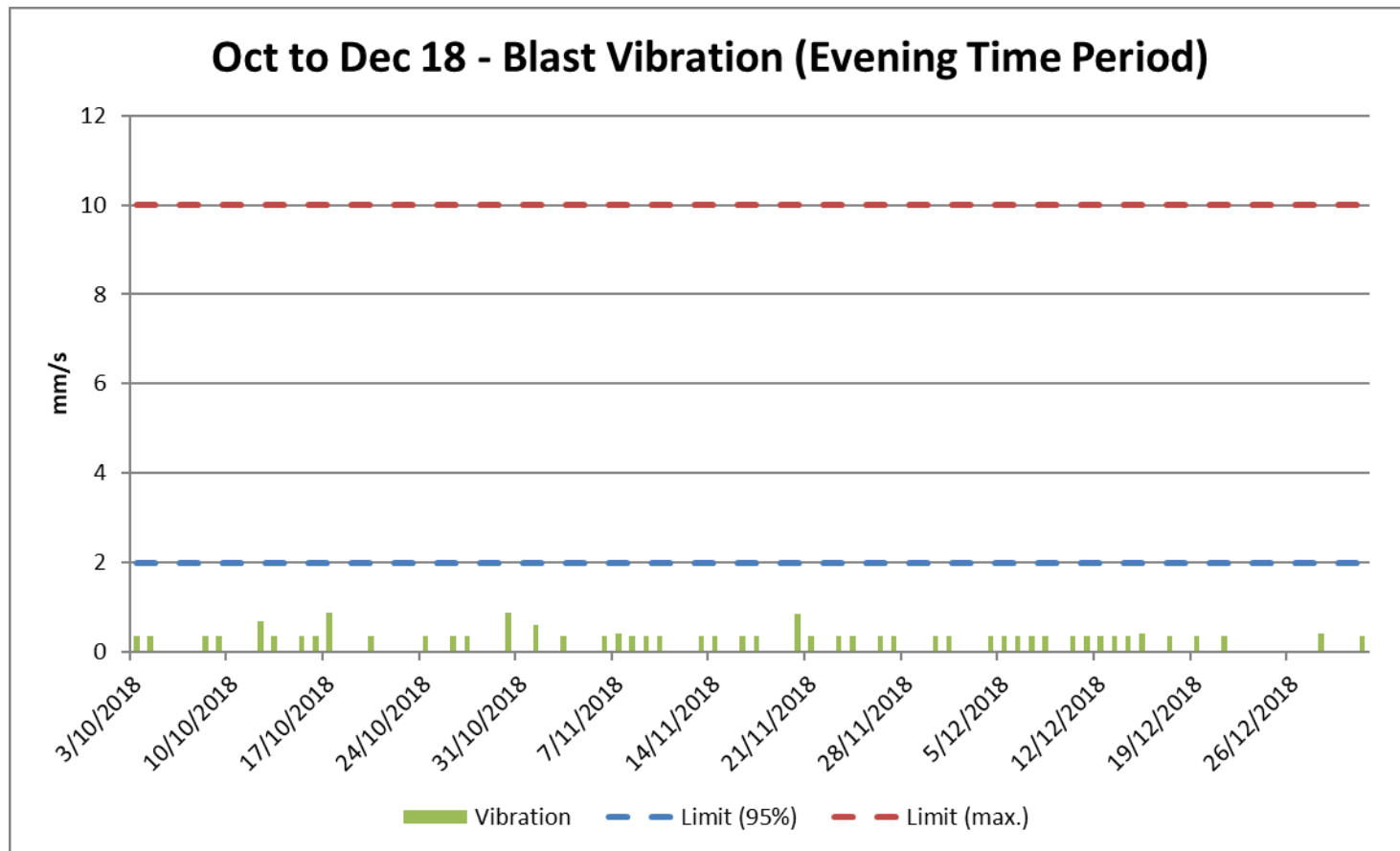
- Document finalisation has taken longer than anticipated. It was advised at the last meeting that the SoEE would be submitted to Department of Planning and Environment in late November or early December 2018. It is likely this will now occur late February early March. No environmental issues have arisen to cause delay, it is simply as a result of the Christmas break and the slow down it creates.
- Ecological consultant AREA has provided their draft report for review and inclusion in the SoEE ;
- Once finalised, a copy of the SoEE will be available at the reception of the Hera Mine Village and the Nymagee Metropolitan Hotel. A copy will also be distributed to members of the CCC via the Independent Chairperson.

- No complaints received this quarter.

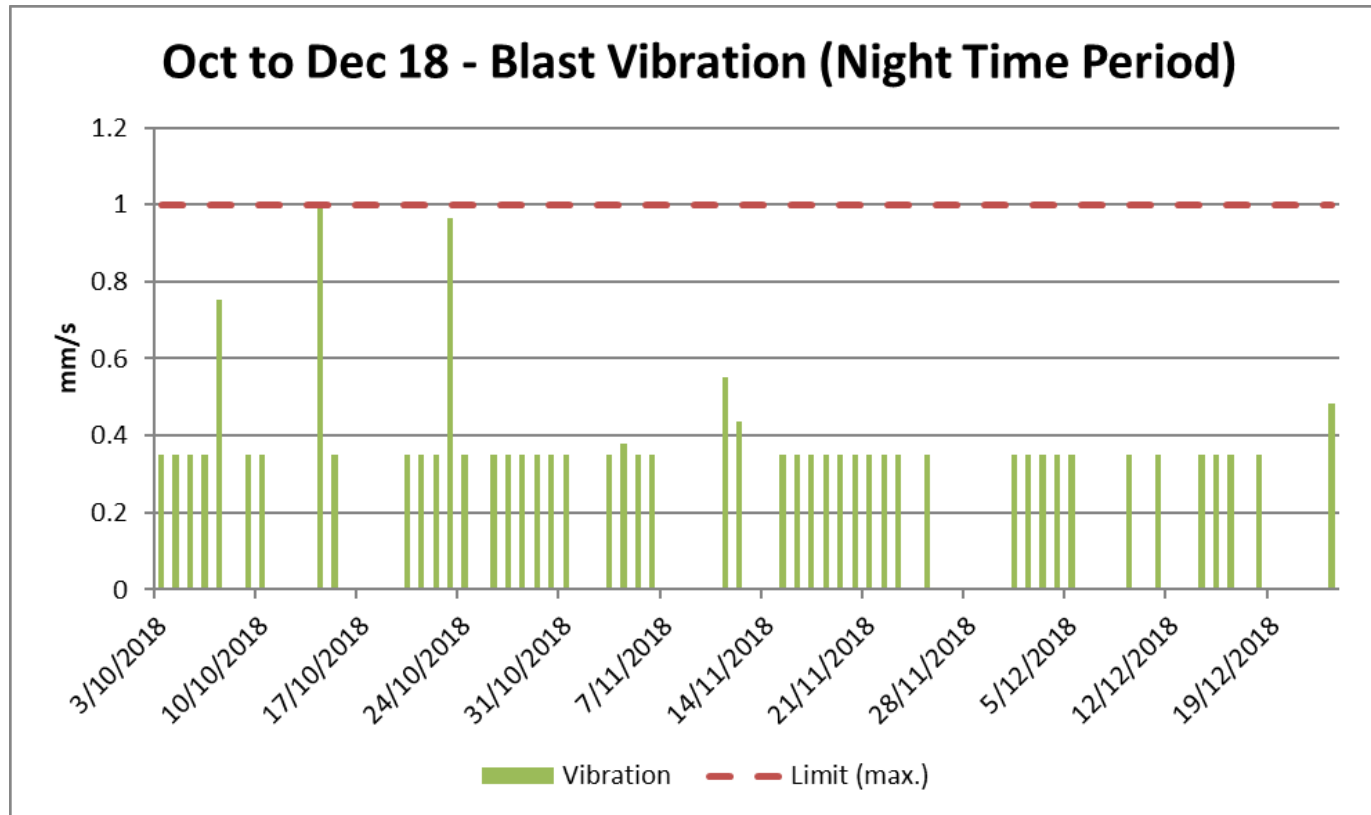
Wind Rose Report for: Hera Resources - 10 Min Data

AVERAGE Wind Direction and MAXIMUM Wind Speed in km/h
Period: 2018-10-01 00:00 to 2018-12-31 00:00
Direction the Wind is Blowing To

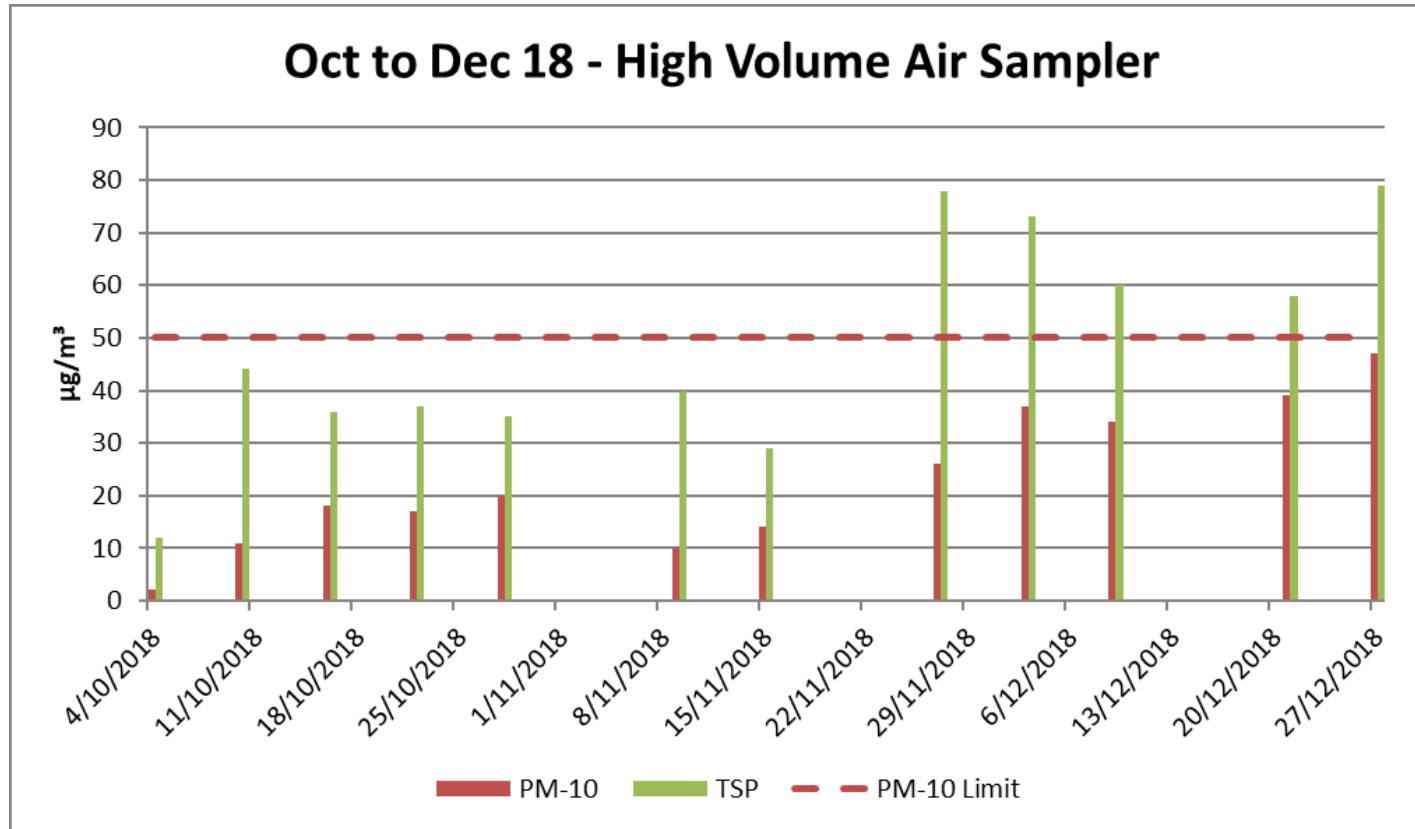




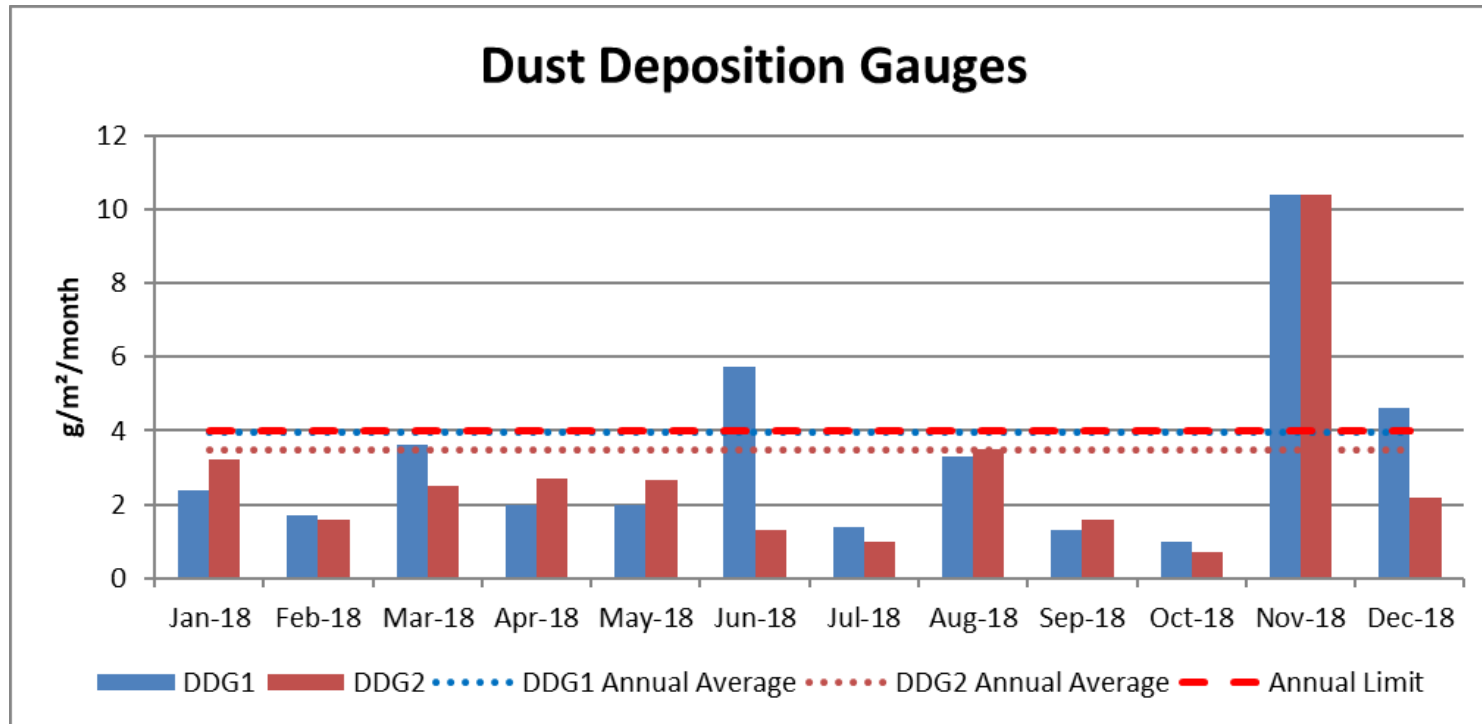
Evening time period = 6pm to 10pm Monday to Saturday



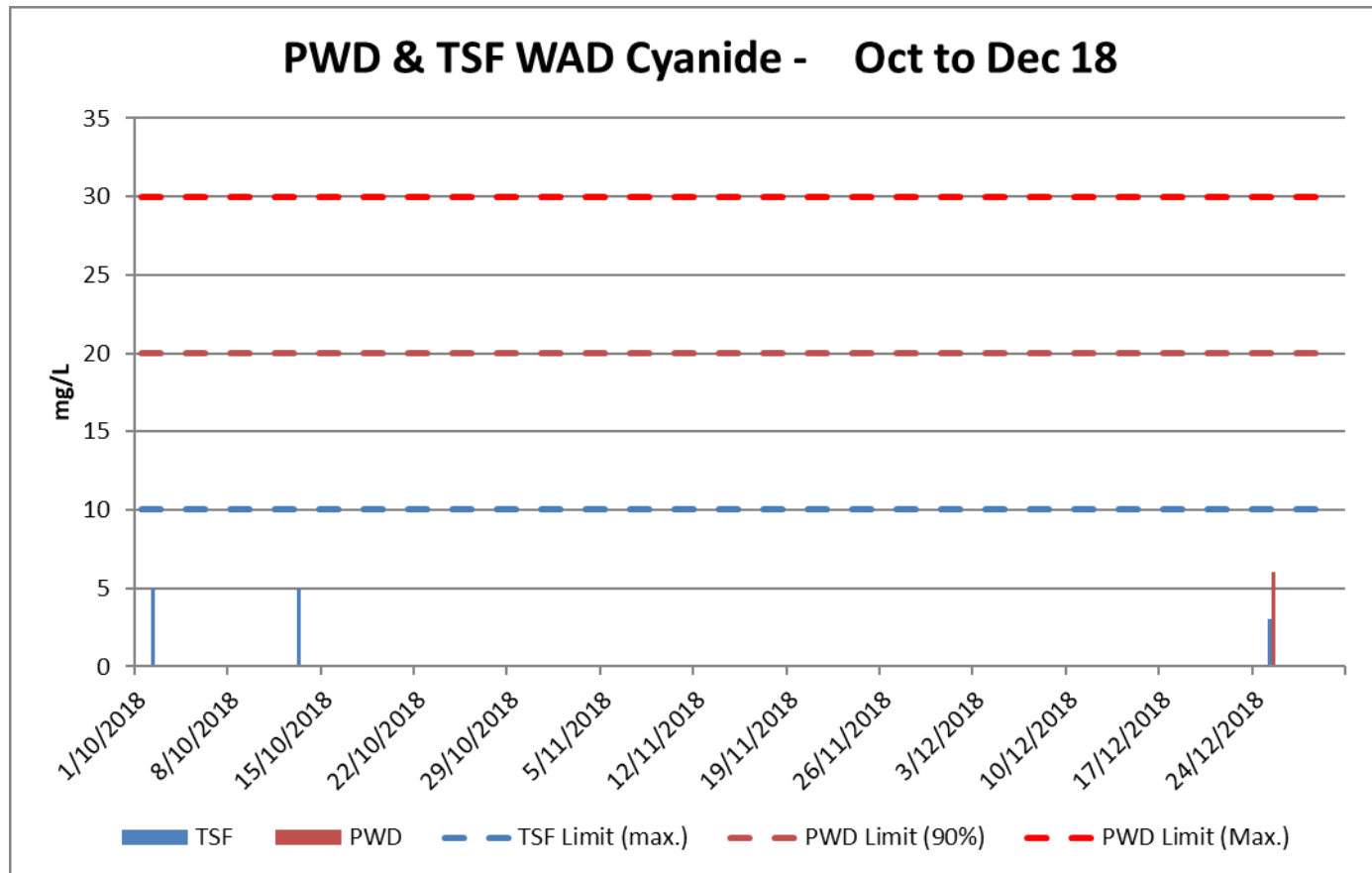
Night time period = 10pm to 7am Monday to Saturday, all day Sunday and Public Holidays

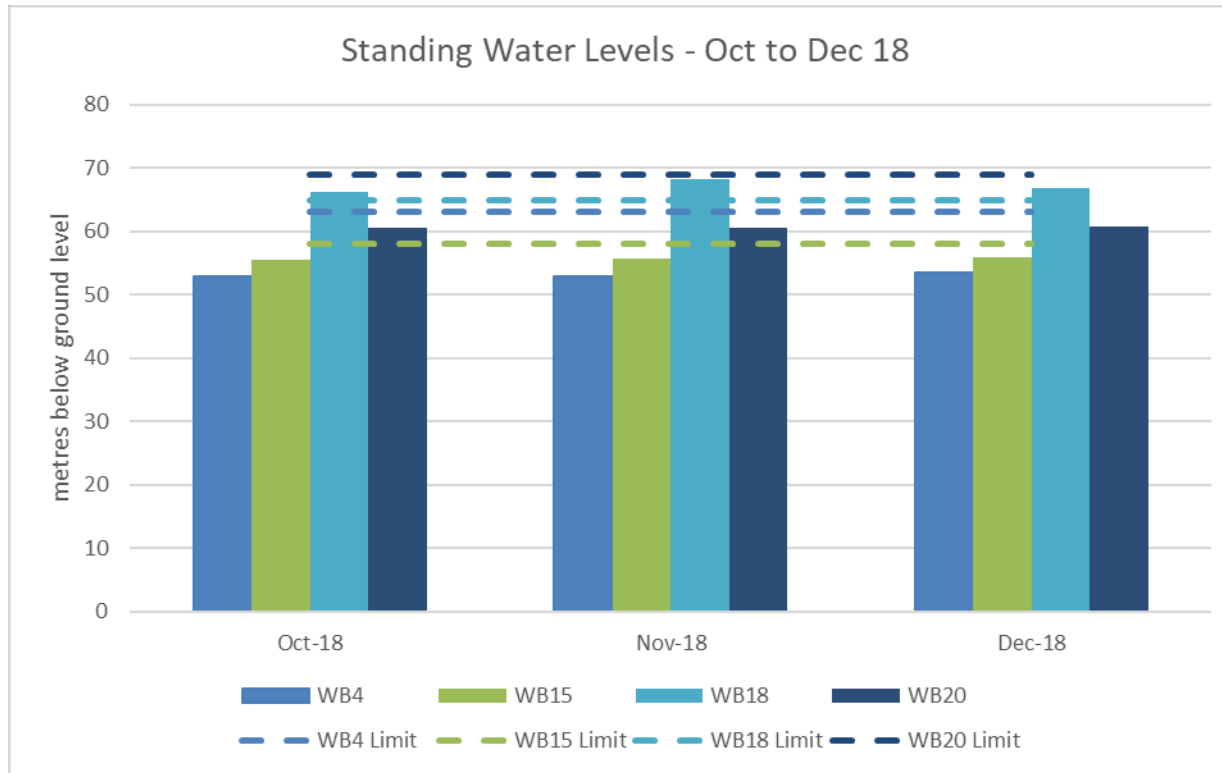


Elevated dust levels continue as a result of the ongoing drought.

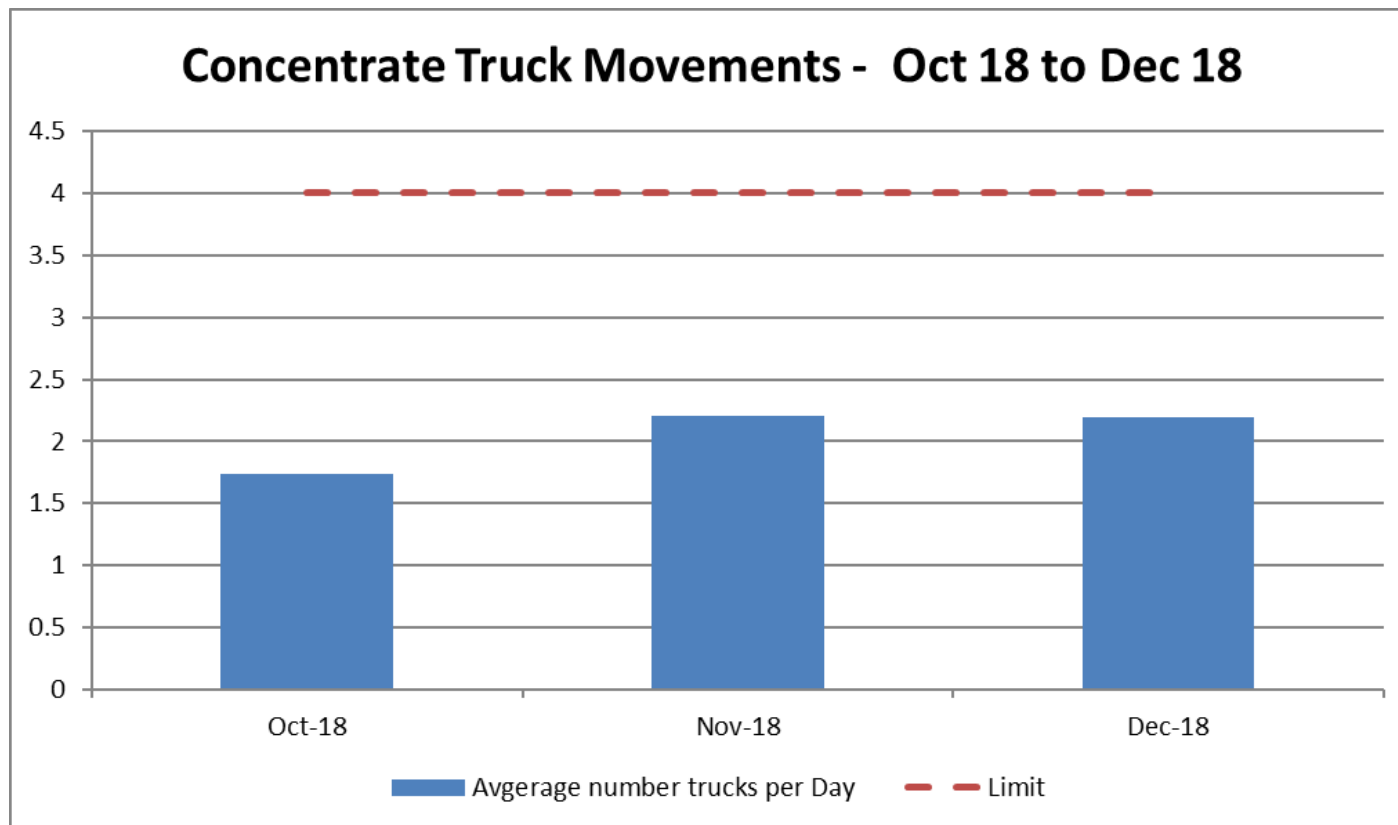


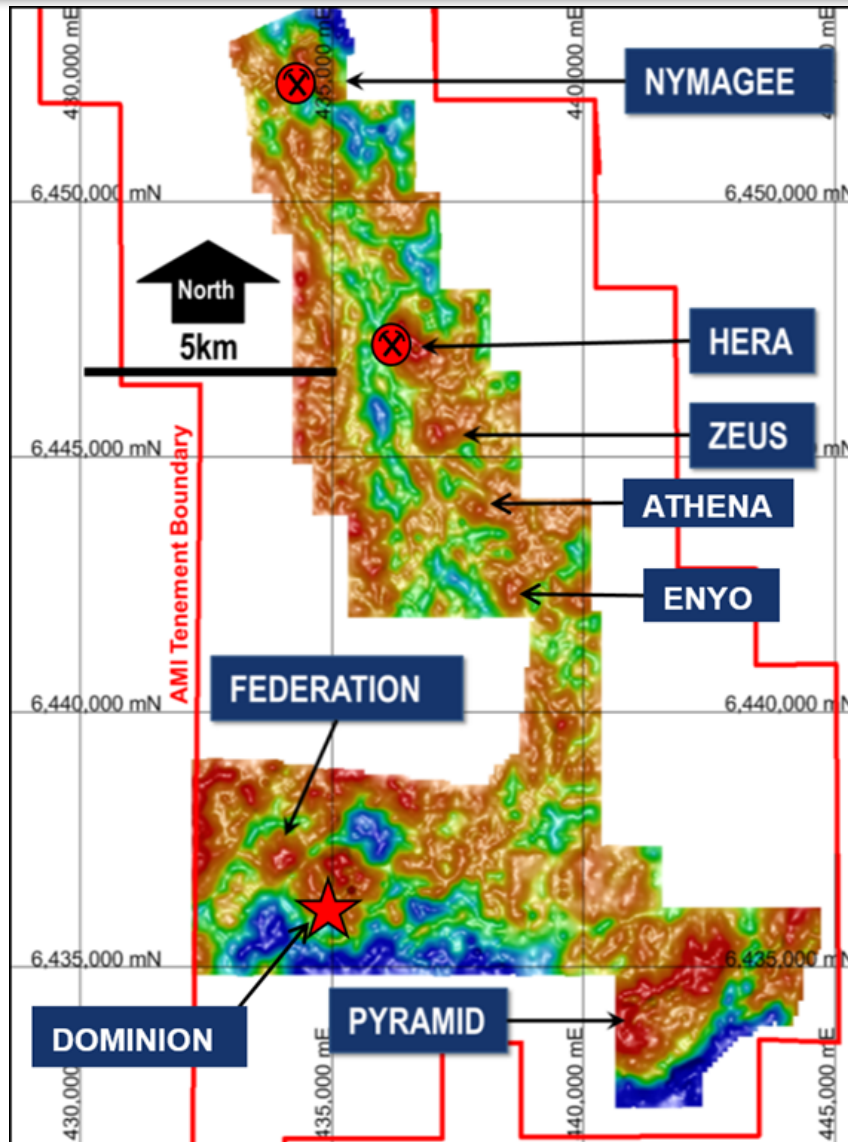
Tailings Storage Facility & Process Water Dam Discharges





Concentrate Truck Movements

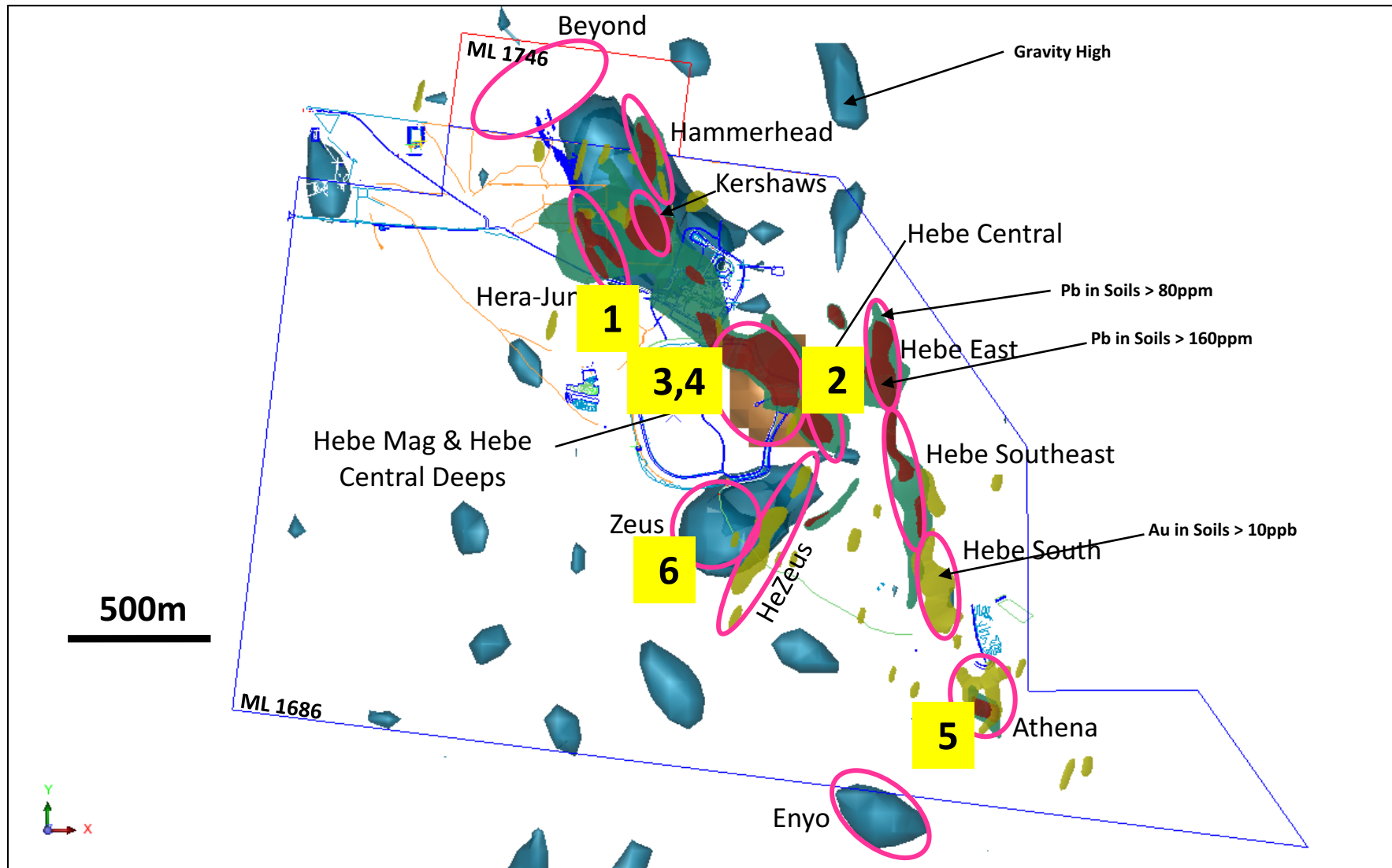




- Strong positive gravity anomalies at Hera and Nymagee
- Probably related to broad alteration systems around mineralisation
- Strong NNW-SSE trend over 15km strike
- Anomalies to the south have coincident geochemical responses
- Ground between Hera and Nymagee poorly explored, negligible drilling

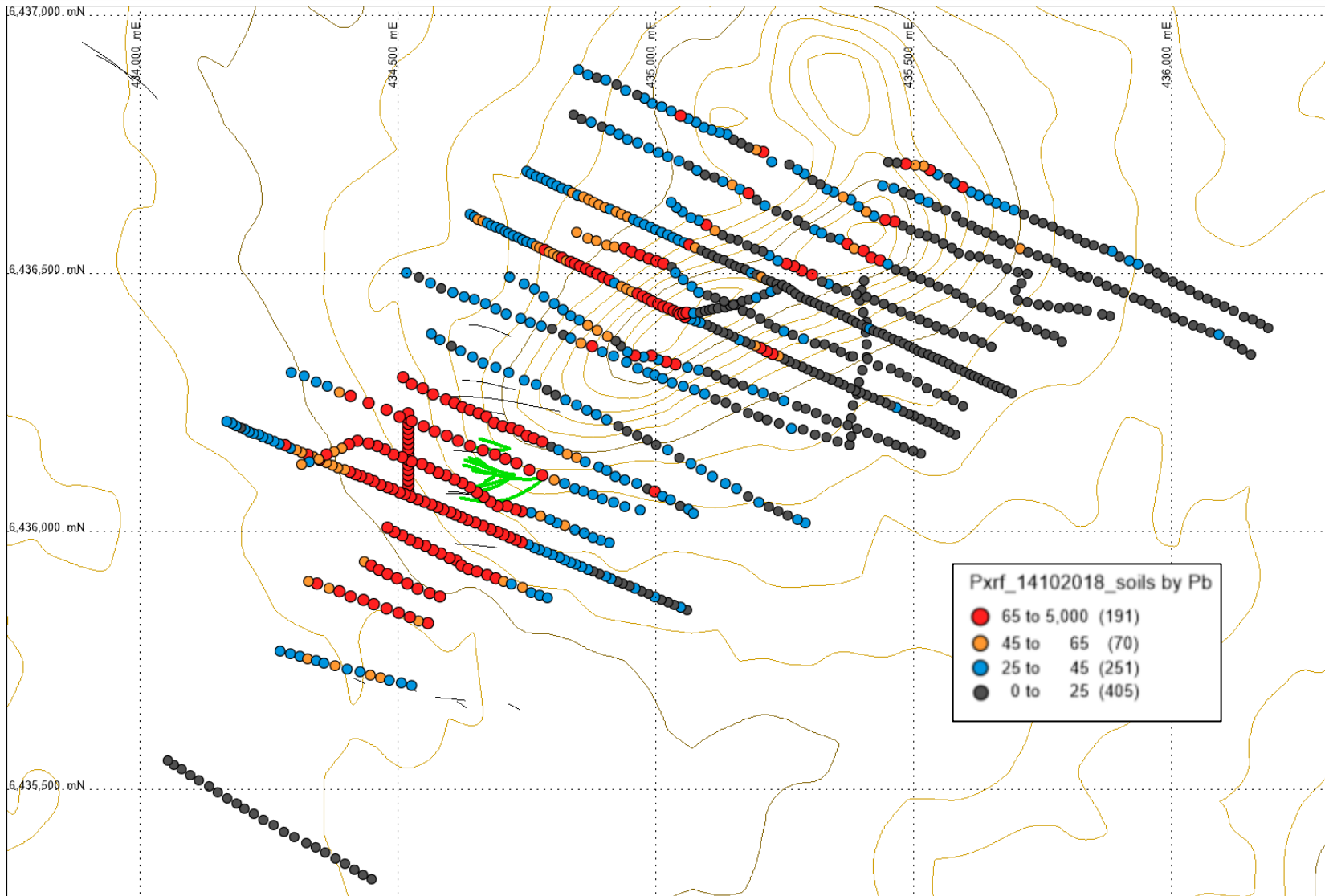
Hera Surface Exploration

NEAR MINE TARGETS



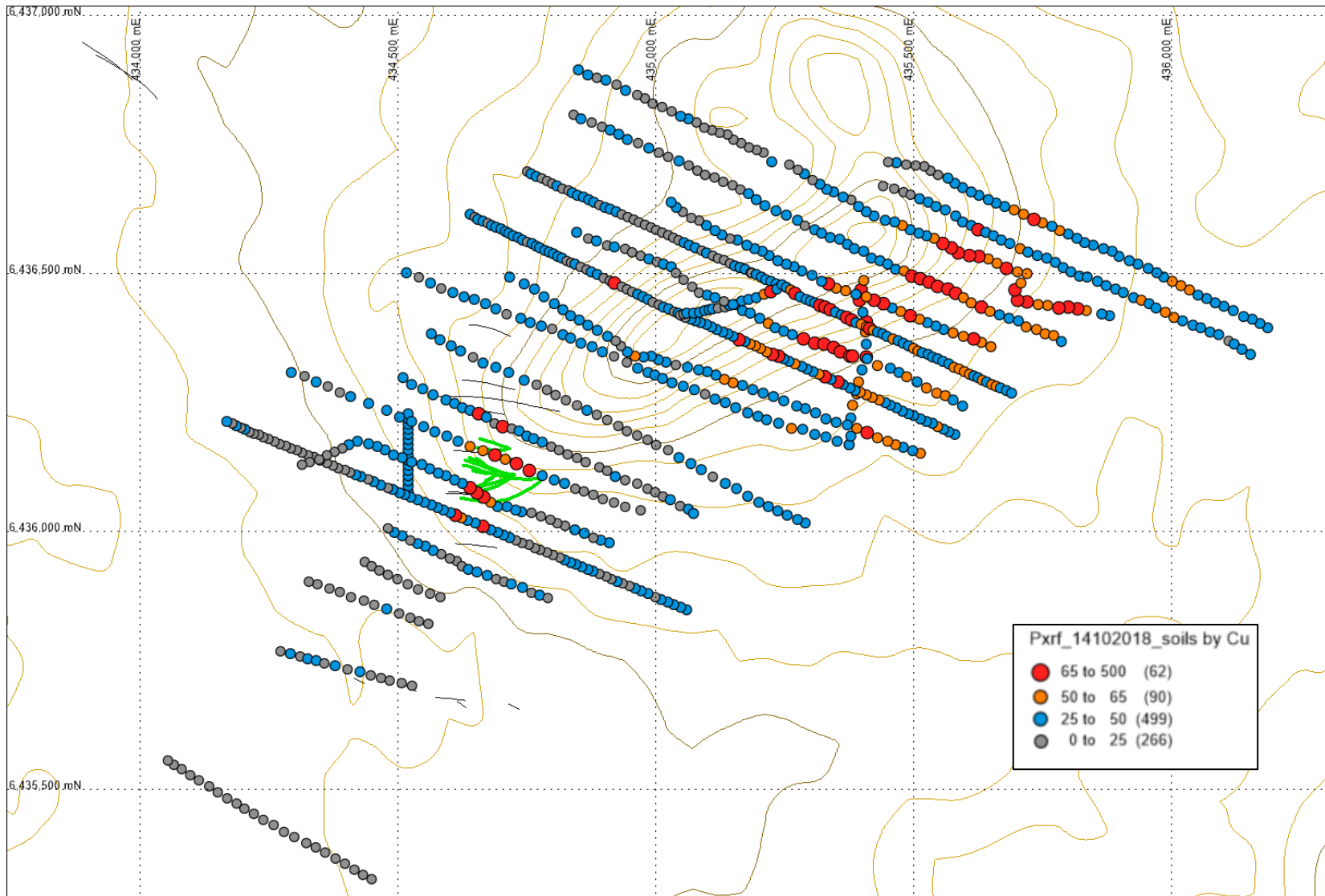
Dominion Prospect

XRF SOIL GEOCHEMISTRY - LEAD

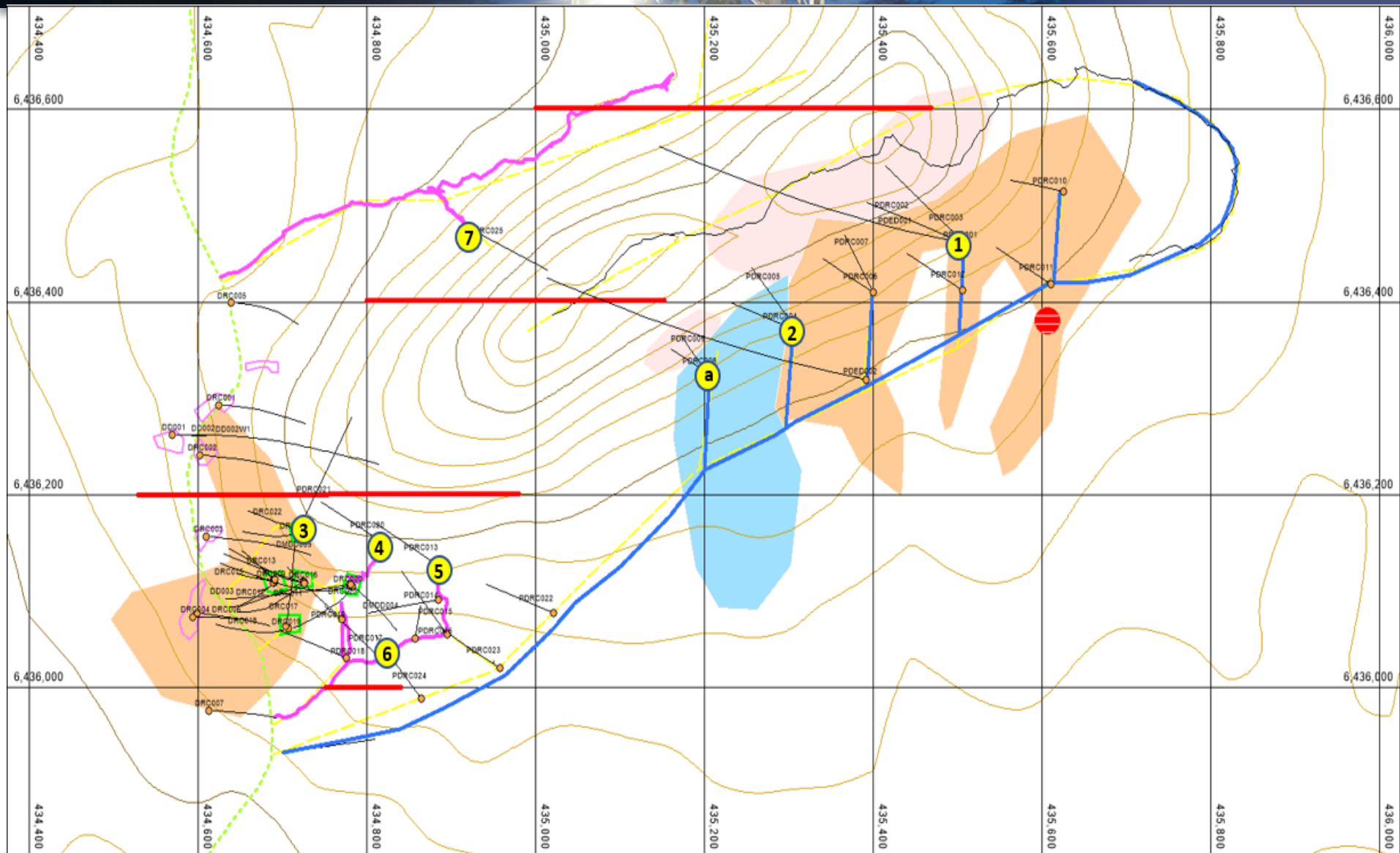


Dominion Prospect

XRF SOIL GEOCHEMISTRY - COPPER



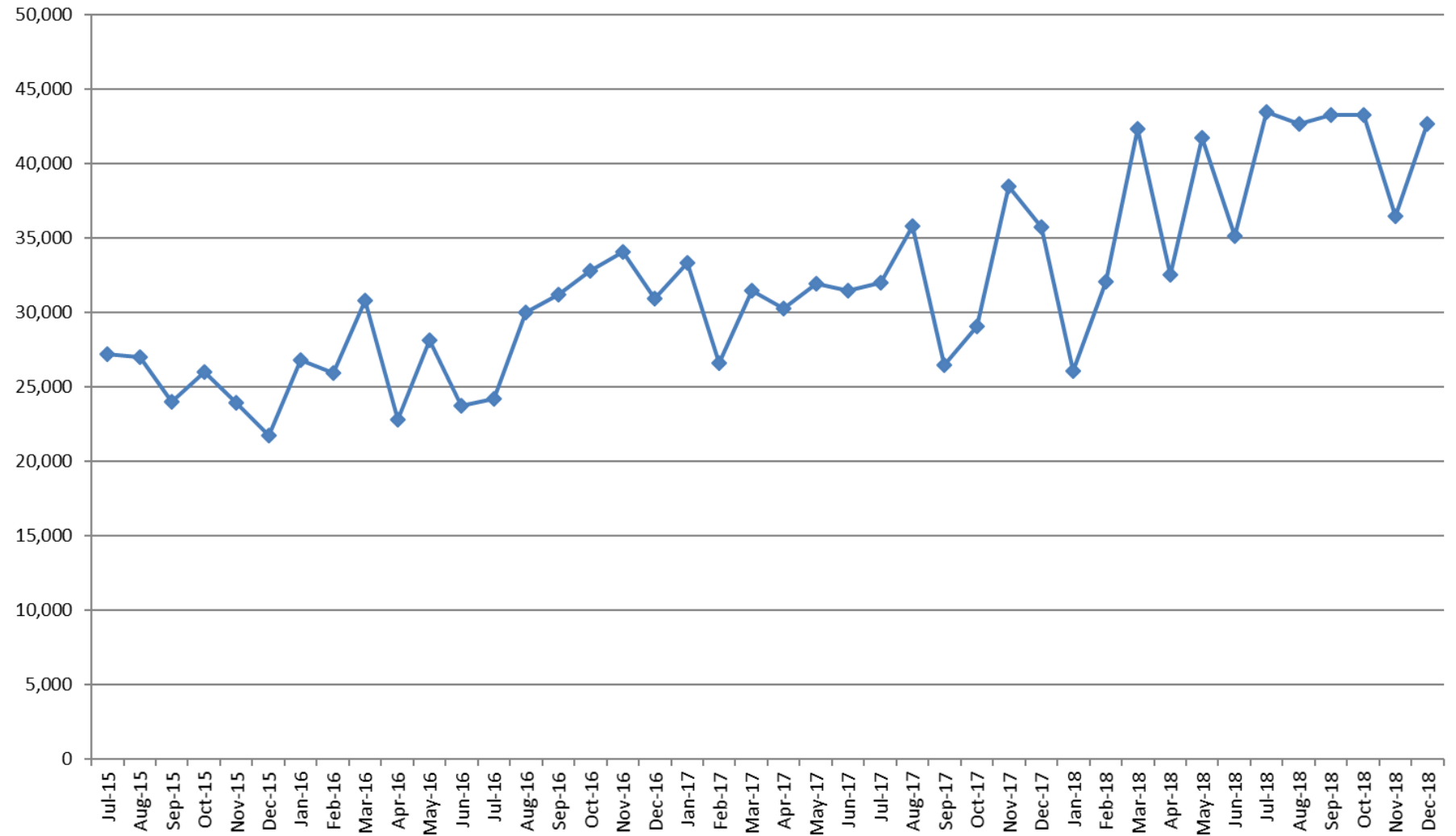
Dominion Prospect



Hera Processing Performance

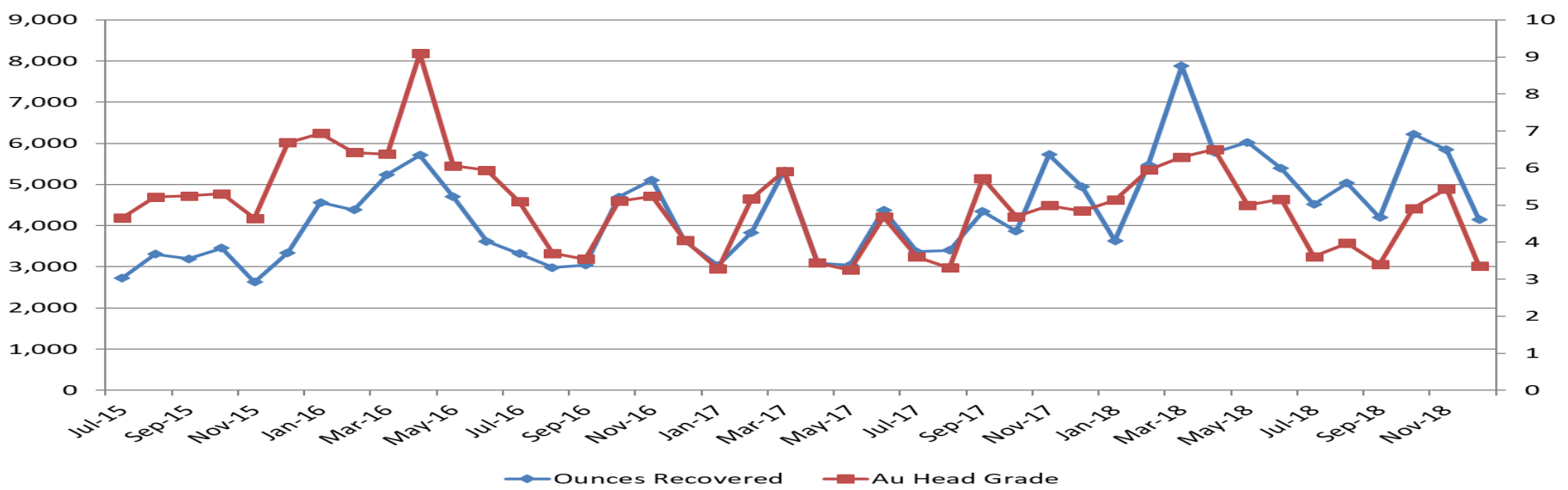
Hera - Dec-18 - KPI Scorecard		Month Actual	Month Budget	YTD Actual	YTD Budget
Safety (TRIFR)		14	20	14	20
Total Lateral development (m)		146	154	1,277	1,119
Total Ore Mined		40,703	43,011	254,915	246,442
Process throughput (t)		42,674	42,899	251,725	249,091
Gold grade processed (g/t)		3.35	4.96	4.08	4.07
Gold recovery (%)		90.4%	94.0%	90.7%	94.0%
Gold production (oz.)		4,148	6,431	29,970	30,665
Pb+Zn grade processed (%)		4.6%	4.8%	4.6%	5.0%
Conc production (dmt)		3,164	3,195	18,185	19,317
Conc grade (%)		55.4%	58.0%	55.4%	58.0%
Recovery - Lead		89%	90%	86%	90%
Recovery - Zinc		90%	90%	89%	90%
Production - Contained Metal - Lead		682	759	3,956	4,479
Production - Contained Metal - Zinc		1,071	1,094	6,112	6,725
Silica in conc (%)		4.9%	3.0%	4.3%	3.0%
Gold losses to Conc (g/t)		1.45	1.00	1.53	1.00
Total onsite cost (opex+capex) (\$/t)		119	139	138	152
Notional cash flow (after growth capital)		4,385	7,728	27,705	26,870

Mill Monthly Throughput

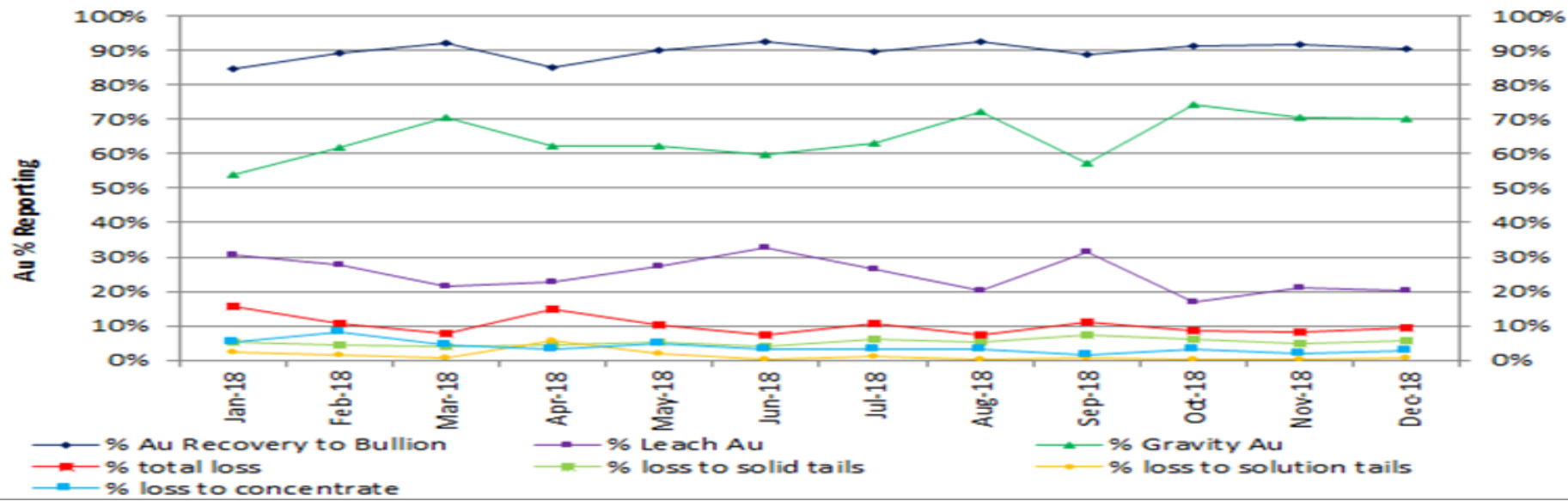


Historical Gold Performance

Ounces Recovered vs Head Grade

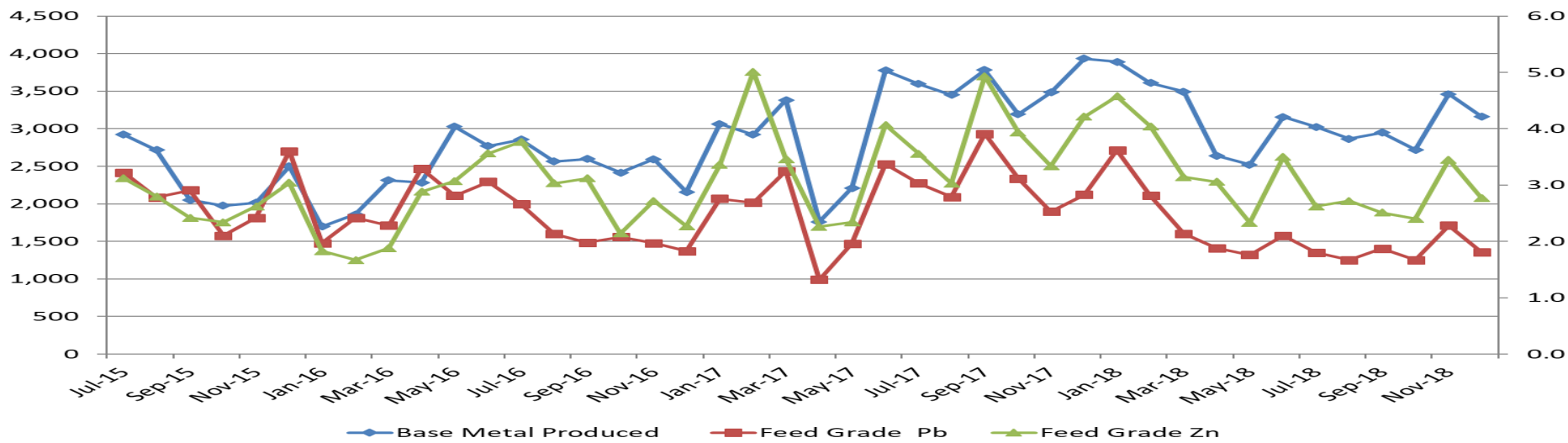


Au % Reporting

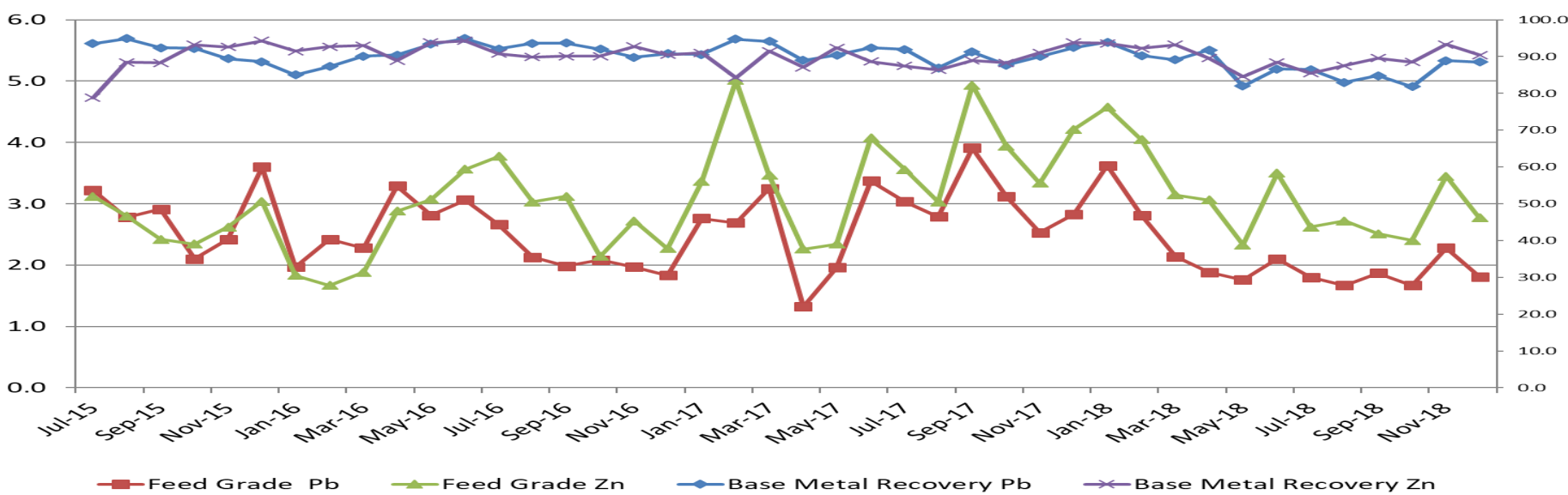


Historical Base Metals Performance

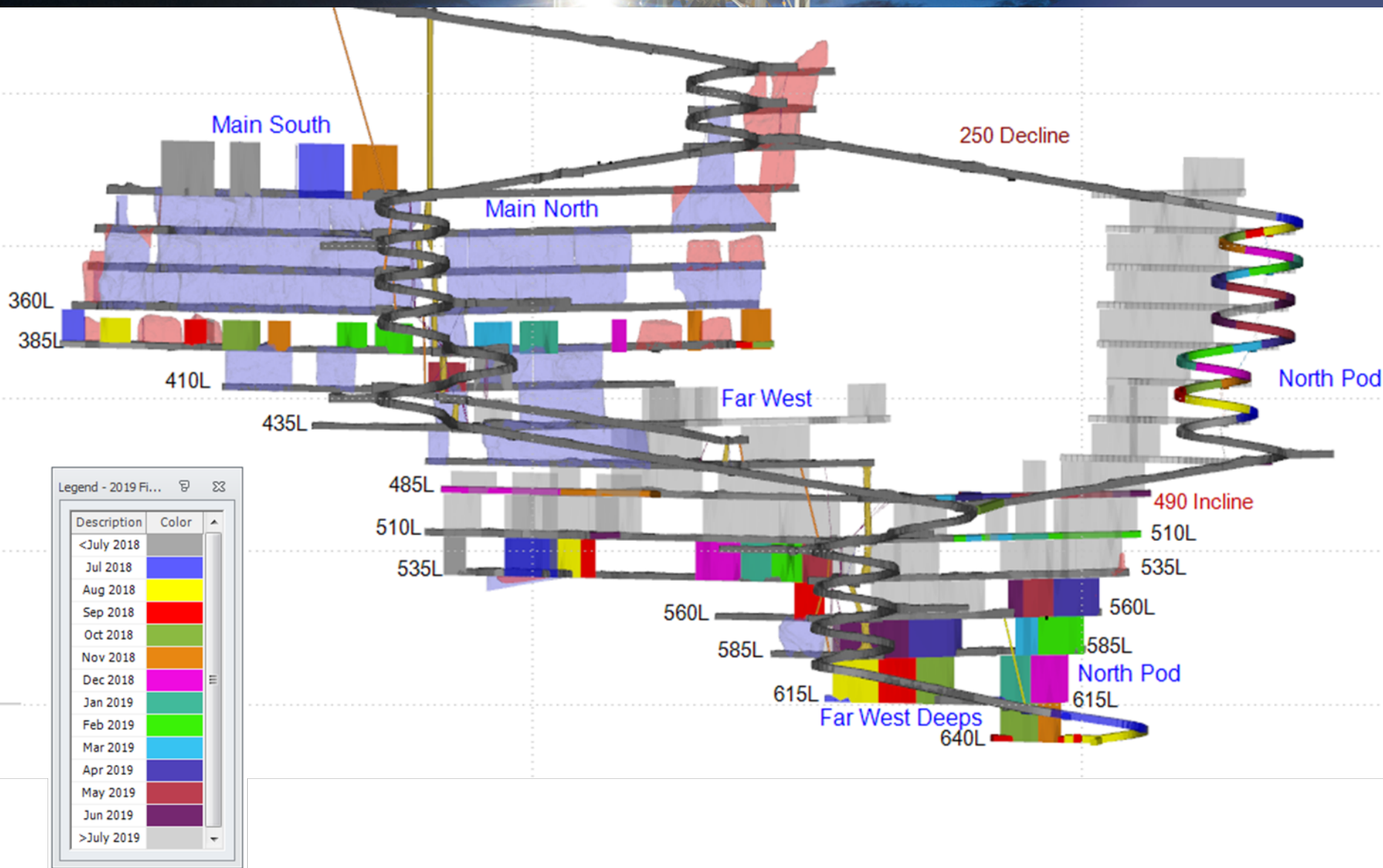
Base Metal Production vs Head Grade



Base Metal Recovery vs Head Grade



FY19 Schedule Production



Life of Mine – Four Years

